

DEPARTMENT OF PROVINCIAL SECRETARY



ANNUAL REPORT

OF THE

MENTAL HOSPITALS

OF THE

PROVINCE OF BRITISH COLUMBIA

FOR 12 MONTHS ENDED MARCH 31ST

1929



PRINTED BY
AUTHORITY OF THE LEGISLATIVE ASSEMBLY.

VICTORIA, B.C. :

Printed by CHARLES F. BANFIELD, Printer to the King's Most Excellent Majesty.
1930.

To His Honour ROBERT RANDOLPH BRUCE,
Lieutenant-Governor of the Province of British Columbia.

MAY IT PLEASE YOUR HONOUR:

The undersigned respectfully submits herewith the Annual Report of the Medical Superintendent of the Mental Hospitals for the fiscal year ended March 31st, 1929.

S. L. HOWE,
Provincial Secretary.

Provincial Secretary's Office.

TABLE OF CONTENTS.

PART I—MEDICAL		PAGE	
Officers and Staff, List of		7	
Report—General Medical Superintendent		9	
Report, Laboratory—Director of Laboratory		12	
Report—X ray Department		12	
Report—Visiting Dentist		13	
Statistical Tables—			
1	Movement of Population during Year	14	
2	Summary of Operations of Hospitals since Inception	16	
3	Admissions, Discharges, and Deaths	17	
4	Civil State of Patients admitted	17	
5	Religious Denominations of Patients	17	
6	Educational Status of Patients	18	
7	Nationality of Patients	18	
8	Districts from which Patients were admitted	19	
9	Occupation of Patients prior to Admission	20	
10	Age of Patients on Admission	21	
11	Number of Attacks at Time of Admission	21	
12	Alleged Duration of Attacks prior to Admission	21	
13	Table of Heredity	22	
14	Alleged Cause of Insanity in Patients admitted	22	
15	State of Bodily Health of Patients admitted	22	
16	Form of Mental Disorder in Patients admitted	23	
17A	Probation, Number allowed out on, Essondale	23	
17B	Probation, Number allowed out on, New Westminster	23	
17C	Probation, Number allowed out on, Saanich	24	
18A	Discharges, showing Alleged Duration of Insanity, Essondale	24	
18B	Discharges, showing Alleged Duration of Insanity, New Westminster	24	
18C	Discharges showing Alleged Duration of Insanity, Saanich	24	
19A	Discharges, showing Length of Residence in Hospital and Condition at Time of Discharge, Essondale	25	
19B	Discharges showing Length of Residence in Hospital and Condition at Time of Discharge, New Westminster	25	
19C	Discharges showing Length of Residence in Hospital and Condition at Time of Discharge, Saanich	25	
20	Deaths, Cause of, and Length of Time in Hospital, Essondale, New Westminster, and Saanich	26	
21	Deportations, New Westminster Essondale, and Saanich	30	
PART II—FINANCIAL			
Report—Bursar		31	
Balance sheet and Profit and Loss Account, New Westminster		32	
Balance sheet and Profit and Loss Account, Essondale		33	
Balance sheet and Profit and Loss Account, Saanich		34	
A	Average Residence, Maintenance, and <i>Per Capita</i> Cost since Inception	35	
B	}	Analysis of Gross <i>Per Capita</i> Cost	36, 37
B 1			
C			
C 1	}	Yearly Gross Expenditure, Analysis of since Inception	38, 39
D			
D	Summary of Gross and Net <i>Per Capita</i> Cost in all Hospitals	40	
E	Expense and Revenue Statement, New Westminster	41	
F	Expense and Revenue Statement, Essondale	43	
G	Expense and Revenue Statement, Saanich	45	

	PAGE
Revenue, Table of, since Inception	47
Report, Financial—Tailor's Department	47
Report, Financial—Shoemaker's Department	49
Production Tables—	
Articles made by Female Patients	49
Mending done by Female Patients for Essondale	50
Mending done by Female Patients for New Westminster	50
Work done by Patients at Essondale	50
Work done by Patients at New Westminster	50
Work done by Teams at Essondale	50
Supplies produced at New Westminster	51
Supplies produced at Colquitz	51
PART III—COLONY FARM	
Report—Farm Superintendent	52
Report—Financial, General—Bursar	52
Balance sheet	53
Profit and Loss Account	54
Dairy and Herds Department—	
Profit and Loss Account	55
Production and Costs Account	55
Milk Production and Cost	55
Bull Department—Profit and Loss Account	56
Mature Cow Department—Profit and Loss Account	56
Yearling Department—Profit and Loss Account	57
Calves Department—Profit and Loss Account	58
Work horse Department—	
Sales and Deaths Account	59
Horse labour Account	59
Horse labour performed	60
Sheep Department—Profit and Loss Account	60
Hog Department—Profit and Loss Account	60
Poultry Department—Profit and Loss Account	61
Cannery—Profit and Loss Account	61
Truck garden and Nurseries—Profit and Loss Account	62
Crop Department—Profit and Loss Account, etc	62-64
Tractor Account	65
Maintenance and Administration General	65
Miscellaneous Statements, Inventories, etc—	
Produce supplied to Essondale	65
Produce supplied to New Westminster	66
Accounts receivable	66
Nursery Stock supplied to Public Schools and Institutions	67
Colony Farm Nursery	67
Equipment	68

DEPARTMENT OF PROVINCIAL SECRETARY.

HON. S. L. HOWE, *Provincial Secretary.*

P. WALKER, *Deputy Provincial Secretary.*

A. L. CREASE, M.D., C.M., *Medical Superintendent.*

E. J. RYAN, M.D., C.M., *Assistant Medical Superintendent.*

G. S. MACGOWAN, *Bursar.*

OFFICERS AND STAFF, ESSONDALE.

Medical:

L. E. SAURIOL, M.D., C.M., L.M.C.C.
A. M. GEE, M.D., C.M., L.M.C.C.
U. P. BYRNE, M.B., L.M.C.C.
J. E. MATHESON, M.B., L.M.C.C.
G. MATHEWSON, *Chief Attendant.*
Miss B. WILLGESS, R.N., *Matron.*
F. J. FISH, *Clinical Clerk.*
I. H. WEDGE, *Clinical Stenographer.*

Business:

C. FLETCHER, *Assistant Bursar.*
J. PUMPHREY, *Steward.*
M. H. McCABE, *Book-keeper.*
THOS. WEEKS, *Book-keeper.*
Miss A. HASLAM, *Stenographer.*
Chaplains:
Rev. H. R. PEARSON, *Protestant.*
Rev. Father PARE, *Roman Catholic.*

Trades, Essondale:

J. L. MALCOLM, *Chief Engineer.*
E. B. STINCHCOMBE, *Outside Overseer.*
W. G. ARMOUR, *Baker.*
H. LONSDALE, *Builder.*
E. FITZGERALD, *Mason.*
E. RUSHTON, *Auto Mechanic.*

A. COOTER, *Chief Cook.*
W. WORRALL, *Laundryman.*
T. MOWBRAY, *Electrician.*
J. SYMINGTON, *Plumber.*
W. J. WILLOWS, *Barber.*
C. SALTER, *Occupational Therapy.*

OFFICERS AND STAFF, NEW WESTMINSTER.

Medical:

C. E. BENWELL, M.B., L.M.C.C.
B. H. O. HARRY, M.D., C.M., L.M.C.C.
Miss M. FILLMORE, *Matron.*
F. SPOONER, *Chief Attendant.*
F. GILLARD, *Clinical Clerk and Stenographer.*

Business:

THOS. CAMBRIDGE, *Assistant Bursar.*
J. F. O'REILLY, *Steward.*
Chaplains:
Rev. H. E. MCPHERSON, *Protestant.*
Rev. Father PLAMANDON, *Roman Catholic.*

Trades, New Westminster:

R. T. HALL, *Carpenter.*
J. BOOTH, *Gardener.*
R. GRAHAM, *Engineer.*
H. BAILEY, *Farmer.*

E. B. JONES, *Laundryman.*
J. McMILLAN, *Shoemaker.*
WM. POWELL, *Painter.*
W. W. GALLOWAY, *Tailor.*

C. M. DOYLE, *Plumber.*

OFFICERS AND STAFF, COLONY FARM.

P. H. MOORE, B.A., B.S.A., *Superintendent.*

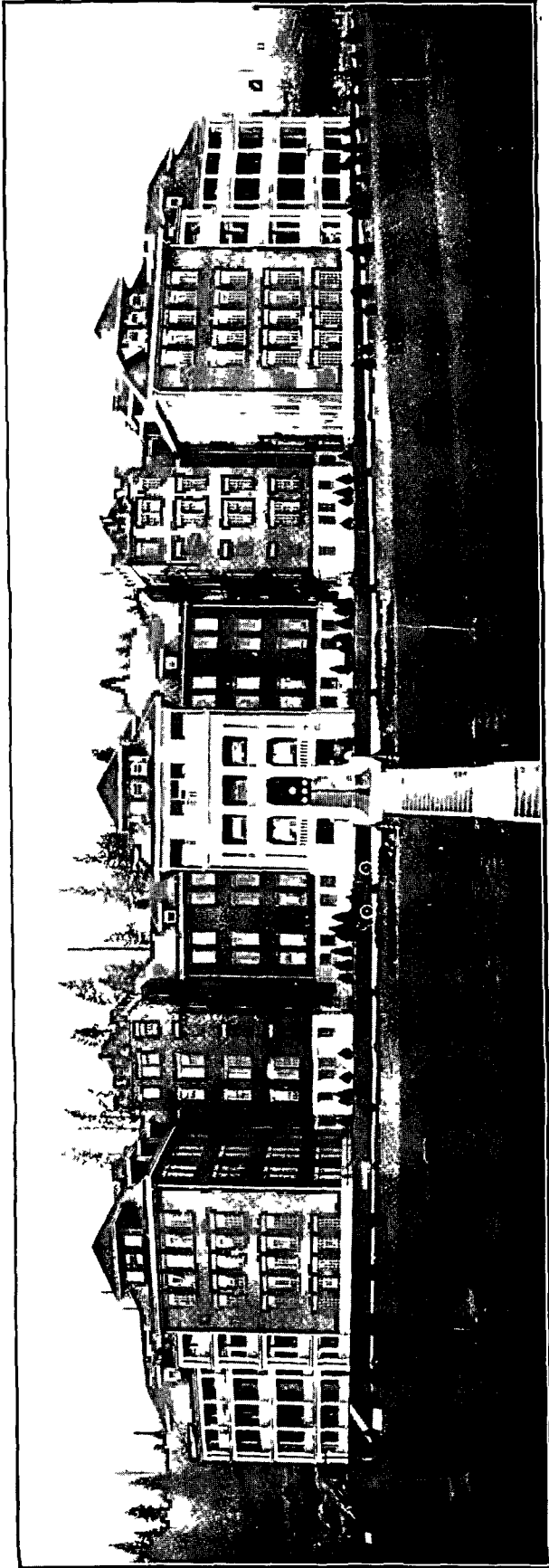
J. LOBBAN, *Record Clerk.*

OFFICERS AND STAFF, COLQUITZ.

GEO. HALL, M.D., C.M., *Visiting Physician.*

GRANBY FARRANT, *Supervisor.*

HARRY HOULT, *Chief Attendant.*



CLERICAL WING, ESSONDALE

REPORT OF THE MEDICAL SUPERINTENDENT

For the Twelve Months ended March 31st, 1929.

PART I—MEDICAL.

PROVINCIAL MENTAL HOSPITAL,

ESSONDALE, B C, April 1st, 1929

*The Honourable the Provincial Secretary,
Parliament Buildings Victoria, B C*

SIR,—I have the honour to submit herewith for your consideration the Fifty seventh Annual Report of the Provincial Mental Hospitals at Essondale, New Westminster, and Saanich I wish also to thank you for the highly practical and efficient way in which you are meeting the problems of mental hygiene It might be well to mention a comparison of the numbers of those patients having mental trouble in the United States, Canada, and British Columbia

It is said that there are about 800 000 hospital beds in the United States, 400 000 of which are occupied by mental patients and who are looked after by about 1 per cent of the total number of doctors in the States, their total population is about 115 000,000, which makes a ratio of about 1 to 287 suffering from mental disease In Canada the population is about 9 000,000, with about 25 000 mentally afflicted, giving a proportion of 1 to 360 In British Columbia the population is 600 000, with 2 000 suffering from mental illness and showing a ratio of 1 to 300 These figures are only approximate and are exclusive of the feeble minded population British Columbia, being a Western Province and on the Coast, is naturally a little higher

The following table gives a general idea of the movements of the Hospital population during the period April 1st, 1928, to March 31st, 1929 —

Movement of Population	Male	Female	Total
In residence April 1st, 1928	1 575	694	2 269
On probation but remaining on registers	46	55	101
On escape but remaining on registers	1		1
New admissions during current year	328	215	543
Total under treatment	1 950	964	2 914
Discharged in full during year	172	100	272
Continuing on probation at end of year	60	54	114
Died during year	119	62	181
Total discharged and deaths during year	351	216	567
In residence, March 31st 1929	1 599	748	2 347

Studying the figures in the following table, certain points come to notice —

- | | |
|--|-------|
| (1) Increase in the number of admissions this year as compared to last | 1 |
| (2) Net increase in population in residence at end of year | 78 |
| (3) Rate of deaths to total treated (per cent) | 6 21 |
| (4) Rate of discharges to admissions (exclusive of deaths) (per cent) | 71 08 |

ADMISSIONS

An analysis of the birthplace column of the registers shows that 181 (or 33 33 per cent) of those admitted were Canadian born, 210 (or 38 65 per cent) were born in different parts of the British Empire, and 152 (or 27 80 per cent) were of foreign birth

The types of mental illness suffered by those received have not varied a great deal The same general classification of cases is applicable and the same relative proportions in the classifications are to be noted There is a very slight increase in our general paresis cases, and also in those of lower mentality

DISCHARGES.

It has again been our experience that those cases admitted in the very early stages of their mental trouble have a better chance of recovery than those who are not treated until a later date. This is indicated in the following table:—

TABLE SHOWING THE ALLEGED DURATION OF INSANITY, PRIOR TO ADMISSION, IN THOSE DISCHARGED FROM THE THREE INSTITUTIONS DURING THE YEAR APRIL 1ST, 1928, TO MARCH 31ST, 1929

Less than six months	165
Over six months	44
Duration not known	60
Not insane	3
Total	272

During the year 272 were fully discharged. Of these, 91 were discharged as recovered, 137 as improved, 43 as unimproved, and 1 had no psychosis. These figures show an increase over our records for the preceding year. Of the number discharged in full, 47 were deported by the Canadian Immigration Department and 11 were repatriated through the kindness of friends and relatives.

It will be noted that our deportations show an increase of twenty seven over those of last year, and in this connection I would like to extend our very grateful thanks to the Immigration Department for their wonderful co-operation in assisting with this work. They have taken endless trouble in establishing these cases, and, as may be imagined, it is frequently very difficult to obtain reliable information. Their courtesy and diligence are very much appreciated.

The Hospital still, as a whole, is greatly overcrowded, especially on the female side, and we are certainly looking forward to the time when the new Female Chronic Building will be opened. It seems almost impossible to keep pace with the admissions, and everything has been done to provide the necessary accommodation, but until the new building is ready for occupation we feel that the limit has been reached.

TREATMENT.

The male and female patients are admitted to the Psychopathic Ward, which is situated in the Acute Building. They are here treated and observed, but, unfortunately, owing to the overcrowding, patients are only domiciled in this department a short time before they have to be transferred. In the great majority of cases longer observation would be of very material benefit.

Malaria and tryparsamide treatments are still being kept up. The percentages run as follows: One third apparent cures, one-third improved, and one third unimproved. This treatment is followed by courses of tryparsamide and bismuth. If the patient is in a reduced physical condition, tryparsamide is administered first, then the malaria, followed by the after-treatment.

LABORATORY.

We are endeavouring to gradually add to the equipment of our Laboratory and X-ray Departments; the table showing the work accomplished in the former department is attached to the report. Dr. Matheson, who was in charge of our Laboratory, resigned during the year, and the work was then carried on by Dr. Byrne, and has been of great assistance to the medical staff in their diagnoses. The X-ray Department, in charge of Dr. Gee, has also been very active and of much benefit to the Hospital.

ACTIVITIES.

During the year a beginning was made on the new airing court for the women. It is on the hillside, commands a splendid view, and I think will be greatly enjoyed by the female patients. The orchard on the west hillside came through the severe winter well, and as more land is cleared further fruit-trees will be planted in an endeavour to increase our supply of fresh fruit, so that more may be canned for the use of patients during the winter. General construction, repairs, and maintenance have received attention. The grounds on the west grade have been levelled and graded, preparatory to being made into lawns.

The grounds for the proposed Apartment Block were excavated by patient-labour, and it is hoped that the apartments will be ready for occupation before the end of the year. Work on the proposed Female Chronic Building and the Nurses' Home has gone on surprisingly quickly, and we are looking forward with keenest anticipation to the day when they will be ready for occupation. It is proposed to erect an addition at the Farm Cottage, which will aid in relieving the overcrowded situation on the hill.

In the Acute Wing a new Sick and Infirm Ward was opened, where most of our sick and infirm patients have been moved. There is a graduate nurse in charge and under her are experienced nurses and orderlies. An endeavour has been made to have this as much like a General Hospital as is possible, considering the mental condition involved as well. This has proved a great success and has been very much appreciated by the patients themselves, and also by their relatives, who have frequently expressed their gratitude with the treatment received.

FINANCES.

For a full recapitulation of the financial operations of the Hospitals during the past fiscal year I would refer you to Mr. Macgowan's letter and accompanying tables.

COLONY FARM.

The report of the Farm Superintendent as attached shows the operations of this branch of the Hospital service.

RECOMMENDATIONS.

I would again recommend the segregation of the feeble-minded. This is very necessary from many standpoints, and the present building is a fire-hazard. I would also strongly recommend the following: A Psychopathic Hospital and a Social Service Department in connection with the Hospital.

ACKNOWLEDGMENTS.

Before closing I wish to acknowledge with sincere thanks the splendid work performed by the Visiting Committee of the Red Cross, of which Mrs. Ellis is the convener. Entertainments and comforts have been supplied our patients at regular intervals and have been greatly appreciated by all those privileged to enjoy them. I would also like to mention the splendid co-operation of the British Columbia Provincial Police. They have aided us very much in our work from every possible angle, and we have always found them most courteous and diligent.

I also wish to make acknowledgment of the loyal and courteous support of the medical officers and staff of the Hospitals, especially Dr. Ryan, the Assistant Medical Superintendent, and Mr. Farrant, for their co-operation and very careful supervision of the Hospitals under their care. Without this co-operation and loyalty on behalf of the members of the Hospital staff, the progress and work of the Mental Hospitals could not have been sustained.

To you, Sir, and to the Deputy Minister, and also to the officers of the Public Works Department, I owe grateful acknowledgment for your unceasing co-operation and considerate understanding and support of the needs of the Hospital, without which it would be impossible for the work to go forward.

I have the honour to be,

Sir,

Your obedient servant,

A. L. CREASE,

Medical Superintendent.

LABORATORY REPORT

PROVINCIAL MENTAL HOSPITAL,

ESSONDALE, B C, March 31st, 1929

A L Crease, Esq, M D, C M,

Medical Superintendent, Provincial Mental Hospital Essondale, B C

SIR,—Following is a report of the work performed in the Laboratory at Essondale from April 1st, 1928, to March 31st, 1929 —

Urinalysis complete	751
Quantitative sugars	3
Kidney function tests	1
Kahn reaction—	
Blood, positive	29
Blood negative	350
Spinal fluid, positive	16
Spinal fluid, negative	15
Globulin	31
Blood counts—	
Red	9
White	10
Hæmoglobin	59
Differential	13
Sputa examination for tuberculosis	38
Miscellaneous smears	802
Cultures	21
Autopsies	1
Sections	7
Widal	4
Abdominal fluid	1
Gastric analysis	1
Bacterial counts on milk	2

I have, etc,

ULTAN P BYRNE,

Pathologist

X RAY REPORT

PROVINCIAL MENTAL HOSPITAL

ESSONDALE, B C, March 31st, 1929

A L Crease, Esq, M D, C M,

Medical Superintendent, Provincial Mental Hospital, Essondale B C

SIR—Following is a report of the work performed in the X ray Department of the Hospital from April 1st, 1928, to March 31st, 1929 —

Head and sinuses	36
Vertebrae	4
Teeth	24
Extremities	85
Chest	13
Gastro intestinal	7
Pelvis	14
Total exposures	183

I have, etc,

A M GEE,

Physician and Roentgenologist

DENTAL REPORT

PUBLIC HOSPITAL FOR THE INSANE,

NEW WESTMINSTER, B C, March 31st, 1929

*A L Crease, Esq, M D, C M,**Medical Superintendent, Mental Hospitals of B C, Essondale, B C*

SIR,—I beg to submit herewith report of dental work performed during the year ended
March 31st, 1929 —

Abscesses treated	1
Bridges repaired	1
Bridges reset	1
Denture adjustments	14
Denture repairs	17
Dentures	18
Extractions	514
Fillings, amalgam	73
Fillings, synthetic porcelain	30
General anaesthetics	
Mandibular injections	1
Other treatments	12
Pyorrhœa treatment	2
Scaling and cleaning	30
X ray examinations	1

I have, etc,

F P SMITH,

Dental Surgeon

STATISTICAL TABLES.

TABLE NO 1—SHOWING THE OPERATIONS OF THE HOSPITALS, ESSONDALE, NEW WESTMINSTER, AND SAANICH, FROM APRIL 1ST, 1928, TO MARCH 31ST, 1929.

Movement of Population.	Male	Female	Total	TOTAL.		
				Male	Female	Total
In residence, Essondale, March 31st, 1928	1,241	114	1,355			
In residence, New Westminster, March 31st, 1928	104	580	684			
In residence, Saanich, March 31st, 1928	230		230			
On probation, carried forward from 1927-28, Essondale	45	36	81			
On probation, carried forward from 1927-28, New Westminster	1	19	20			
On probation, carried forward from 1927-28, Saanich						
Escaped, carried forward from 1927-28, Essondale						
Escaped, carried forward from 1927-28, New Westminster						
Escaped, carried forward from 1927-28, Saanich	1		1			
				1,622	740	2,371
Admitted during the year, 1928-29—						
By ordinary forms	303	209	512			
By urgency forms	11	5	16			
By voluntary forms	7	1	8			
From the Yukon	2		2			
Order in Council	5		5			
				328	215	543
Total under treatment, Essondale, New Westminster, and Saanich, April 1st, 1928, to March 31st, 1929				1,950	964	2,914
Discharged during period April 1st, 1928, to March 31st, 1929—						
(a) From Essondale—						
As recovered	46	23	69			
As improved	82	32	114			
As unimproved	27	8	35			
Not insane		1	1			
On probation and still out	52	36	88			
Escaped, but not discharged	3		3			
Died	113	23	136			
	323	123	446			
(b) From New Westminster—						
As recovered	5	16	21			
As improved	2	15	17			
As unimproved	2	5	7			
Not insane						
On probation and still out	4	18	22			
Escaped, but not discharged						
Died		39	39			
	13	93	106			
(c) From Saanich—						
As recovered	1		1			
As improved	6		6			
As unimproved	1		1			
On probation and still out	1		1			
Died	6		6			
	15		15			
Total discharged from Essondale, New Westminster, and Saanich				351	216	567
Total in residence, Essondale, New Westminster, and Saanich				1,599	748	2,347

TABLE NO 1—SHOWING THE OPERATIONS OF THE HOSPITALS, ESSONDALE, NEW WESTMINSTER, AND SAANICH, FROM APRIL 1ST, 1928, TO MARCH 31ST, 1929—Continued

Movement of Population	Male	Female	Total	TOTAL		
				Male	Female	Total
Essondale—						
Total on books, March 31st, 1928	1 286	150	1,436			
Admissions during 1928-29	328	215	543			
Received from New Westminster	7	1	8			
Received from Saanich						
				1,621	366	1,987
Discharged during 1928-29	323	123	446			
Transferred to New Westminster	15	122	137			
Transferred to Saanich	13		13			
				351	245	596
Total in residence, Essondale, March 31st, 1929				1,270	121	1,391
New Westminster—						
Total on books, March 31st, 1928	105	599	704			
Received from Essondale	15	122	137			
				120	721	841
Discharged during 1928-29	13	93	106			
Returned to Essondale	7	1	8			
				20	94	114
Total in residence, New Westminster, March 31st, 1929				100	627	727
Saanich—						
Total on books, March 31st, 1928	231		231			
Received from Essondale	13		13			
				244		244
Discharged during 1928-29	15		15			
				15		15
Total in residence, Saanich, March 31st, 1929				229		229
Total in residence, Essondale, March 31st, 1929	1,270	121	1 391			
Total in residence, New Westminster, March 31st, 1929	100	627	727			
Total in residence, Saanich, March 31st, 1929	229		229			
Grand total in residence, Essondale, New Westminster, and Saanich, March 31st, 1929				1,599	748	2,347

Daily average population	2,293 61
Percentage of discharges on admissions (not including deaths)	71 07
Percentage of recoveries on admissions	18 76
Percentage of deaths on whole number under treatment	6 211

TABLE No 2—SHOWING IN SUMMARY FORM THE OPERATIONS OF THE HOSPITAL SINCE ITS INCEPTION

Year	Admissions	DISCHARGES		Deaths	Number Resident at the Close of each Year	Increase	Decrease	Whole Number treated	Percentage of Recoveries to Admissions	Percentage of Discharges to Admissions (Deaths excluded)	Percentage of Deaths to Whole Number under Treatment
		Recovered	Not recovered								
1872	18	1		1	16			18	5 55	5 55	5 55
1873	15	10	2	5	14			31	66 66	80 00	16 12
1874	12	4		3	19	5	2	26	33 33	33 33	11 53
1875	29	3	3	10	32	13		48	10 34	26 89	20 83
1876	22	11	3	5	35	3		54	50 00	63 63	9 35
1877	14	4	4	3	38	3		49	28 57	78 57	6 12
1878	16	7	3	8	36		2	54	43 75	62 50	16 16
1879	18	4	1	8	41	5		54	22 22	27 77	14 81
1880	17	5		5	48	7		58	29 41	29 41	8 62
1881	13	5	3	5	48			61	38 46	61 54	8 19
1882	7	3	1	2	49	1		55	42 85	57 14	3 63
1883	8	4	1	3	49			57	50 00	62 50	5 26
1884	10	2	4	2	51	2		59	20 00	60 00	3 33
1885	20	5		5	61	10		71	25 00	25 00	6 94
1886	27	10	6	6	66	5		88	37 03	59 25	6 81
1887	36	15	5	5	77	11		102	41 66	55 55	4 80
1888	26	12	6	3	82	5		103	46 15	69 23	2 87
1889	41	14	5	4	100	18		123	34 15	46 34	3 25
1890	52	17	6	12	117	17		152	32 69	44 23	7 64
1891	49	19	4	20	123	6		166	38 77	46 94	11 69
1892	52	17	10	13	135	12		175	32 67	51 92	6 95
1893	44	14	15	14	133		2	179	31 81	72 72	7 60
1894	80	13	19	19	162	29		213	16 25	40 00	8 92
1895	62	29	11	20	164	2		224	46 77	64 51	8 92
1896	64	23	25	9	171	7		228	35 93	75 00	3 94
1897	74	20	8	14	203	32		246	27 03	37 83	5 69
1898	81	27	13	19	221	18		285	33 33	49 38	6 66
1899	101	31	32	21	234	13		327	30 69	62 37	6 42
1900	113	38	27	29	258	24		356	33 63	57 52	8 14
1901	115	40	20	25	284	26		377	34 78	52 17	6 63
1902	121	30	31	25	311	27		413	24 79	50 41	6 06
1903	139	38	37	26	349	38		466	27 34	53 96	5 57
1904	115	46	26	26	321		28	480	40 00	62 61	5 42
1905	123	43	33	27	348	27		505	33 33	61 78	5 34
1906	150	36*	43	28	388	43		552	23 03	52 06	5 04
1907	221	48	43	39	461	73		666	21 30	41 20	5 08
1908	230	68*	56	57	507	46		765	28 30	53 90	7 44
1909	232	73†	77	40	536	29		816	31 00	64 60	6 40
1910	280	84	82	41	595	48		896	30 00	59 28	4 57
1911	332	67‡	114	60	690	105		1,034	19 57	54 42	5 83
1912	375	74‡	128	76	752	62		1,065	18 90	53 80	7 02
1913	380	90§	146	67	919	167		1,264	22 63	62 10	5 30
1914	402	58	126	74	1,027	108		1,364	14 43	45 77	5 43
1915	332	83	91	89	1,090	63		1,437	25 00	52 41	6 19
1916	353	73†	96	80	1,205	115		1,527	20 68	47 87	5 24
1917	371	88	78	106	1,301	96		1,651	23 72	44 74	6 42
1918	375	75	95	132	1,347	46		1,753	20 00	45 33	7 47
Jan 1 1919 to Mar 31, 1920	574	116	221	132	1,458	111		2,025	20 20	58 71	6 51
1920 1921	489	88	173	122	1,566	108		2,043	14 17	72 60	5 97
1921 1922	478	96	178	114	1,649	83		2,137	20 08	57 32	5 33
1922 1923	438	91	167	133	1,697	48		2,180	20 77	59 36	6 10
1923 1924	447	84†	121	163	1,784	87		2,234	18 56	64 20	7 25
1924 1925	461	63	242	138	1,884	100		2,327	13 66	66 16	5 93
1925 1926	475	57‡	240	142	1,995	111		2,434	12 00	62 53	5 83
1926 1927	494	76§	171	161	2,125	130		2,565	15 38	50 00	6 27
1927 1928	542	75*	252	147	2,269	144		2,743	13 23	60 33	5 36
1928 1929	543	92†	291	181	2,347	78		2,914	16 76	71 07	6 21

* Three not insane † One not insane ‡ Two not insane § Four not insane || Six not insane

TABLE NO 3—SHOWING THE TOTAL NUMBER OF ADMISSIONS, DISCHARGES, AND DEATHS FROM APRIL 1ST, 1928, TO MARCH 31ST, 1929

Months	ADMISSIONS			DISCHARGES			DEATHS		
	Male	Female	Total	Male	Female	Total	Male	Female	Total
1928									
April	22	18	40	11	15	26	21	9	30
May	30	13	43	12	9	21	10	5	15
June	28	20	48	12	5	17	5	5	10
July	20	21	41	9	6	15	7	4	11
August	23	24	47	19	9	28	6	5	11
September	19	23	42	10	14	24	7	3	10
October	23	17	40	12	9	21	4	8	12
November	35	15	50	21	4	25	5	3	8
December	33	14	47	11	6	17	11	7	18
1929									
January	30	11	41	23	2	25	15	4	19
February	30	17	47	15	7	22	14	6	20
March	35	22	57	17	14	31	14	3	17
Totals	328	215	543	172	100	272	119	62	181

TABLE NO 4—SHOWING CIVIL STATE OF PATIENTS ADMITTED FROM APRIL 1ST, 1928, TO MARCH 31ST, 1929

Civil State	Male	Female	Total
Married	105	128	233
Single	195	63	258
Divorced	5	1	6
Widowed	17	23	40
Unknown	6		6
Totals	328	215	543

TABLE NO 5—SHOWING RELIGIOUS DENOMINATIONS OF PATIENTS ADMITTED FROM APRIL 1ST, 1928, TO MARCH 31ST, 1929

Religious Denominations	Male	Female	Total
Agnostic	1		1
Buddhist	6	6	12
Christian Science	1	3	4
Confucian	5	1	6
Doukhoror	1	1	2
Greek Catholic	5		5
Hebrew	2	1	3
Lutherian	37	6	43
Mohammedan	1		1
Protestant	200	159	359
Roman Catholic	60	33	93
Salvation Army	4	1	5
Seventh Day Adventists	4	3	7
Unknown	1	1	2
Totals	328	215	543

TABLE NO. 6.—SHOWING THE DEGREE OF EDUCATION OF THOSE ADMITTED FROM APRIL 1ST, 1928, TO MARCH 31ST, 1929.

Degree of Education.	Male.	Female.	Total.
Good.....	23	26	49
Common.....	237	121	358
Poor.....	56	56	112
None.....	12	12	24
Totals.....	328	215	543

TABLE NO. 7.—SHOWING THE NATIONALITY OF THOSE ADMITTED FROM APRIL 1ST, 1928, TO MARCH 31ST, 1929.

Nationality.	Male.	Female.	Total.
Australia.....	2	2
Austria.....	2	2
Bahamas.....	1	1
Belgium.....	1	1
British West Indies.....	1	1
Chile.....	1	1
China.....	2	3	10
Denmark.....	2
Egypt.....	1	1
England.....	70	64	134
Finland.....	11	1	12
France.....	1	1	2
Germany.....	5	1	6
Greece.....	2	2
Hungary.....	1	1
Iceland.....	1	1
India.....	3	1	4
Ireland.....	13	7	20
Italy.....	7	1	8
Japan.....	4	4	8
Jugo-Slavia.....	3	1	4
Korea.....	1	1
Lithuania.....	2	2
Newfoundland.....	3	1	4
Norway.....	8	1	9
Poland.....	3	2	5
Rumania.....	1	1
Russia.....	5	2	7
Scotland.....	24	15	39
South Africa.....	1	1
Sweden.....	18	2	20
Switzerland.....	1	1	2
United States.....	22	19	41
Unknown.....	3	3
Wales.....	3	1	4
Canada—			
Alberta.....	5	3	8
British Columbia.....	32	34	66
Manitoba.....	4	5	9
New Brunswick.....	1	4	5
Nova Scotia.....	4	4	8
Ontario.....	36	24	60
Prince Edward Island.....	5	5
Quebec.....	9	6	15
Saskatchewan.....	2	2	4
Canada (general).....	1	1
Totals.....	328	215	543

TABLE NO. 8.—SHOWING WHAT DISTRICTS CONTRIBUTED PATIENTS FROM APRIL 1ST, 1928, TO MARCH 31ST, 1929.

Place of Residence.	Male.	Female.	Total.	Place of Residence.	Male.	Female.	Total.
Abbotsford	1	1	2	<i>Brought forward...</i>	73	41	114
Agassiz	1	1	Mission.....	1	1
Alberni	1	1	2	Monte Lake	1	1
Aldergrove	2	2	Murrayville	3	3
Anaconda	1	1	Nanaimo	6	6
Armstrong	2	2	Naramata	1	1
Ashcroft	1	1	Nelson	8	1	9
Ashton Grove	1	1	New Denver	1	1
Bamfield	1	1	New Masset	1	1
Barriere	1	1	New Westminster	14	16	30
B.C. Penitentiary	1	1	Oakalla Prison Farm	3	3
Bella Coola	1	1	Oliver	2	2
Britannia Beach	1	1	Pemberton Meadows	1	1
Burnaby	8	8	16	Penticton	2	2
Campbell River	2	2	Port Alberni	1	1
Canyon	1	1	Port Alice	1	1
Cache Creek	1	1	Port Coquitlam	3	3	6
Chemainus	1	1	Port Hammond	1	1
Chilliwack	4	3	7	Port Haney	2	1	3
Church House	1	1	2	Port Moody	1	1
Cloverdale	1	1	2	Port Simpson	1	1
Colleymount	1	1	Powell River	2	4	6
Cowichan	1	1	Prince George	3	3
Cranbrook	3	1	4	Princeton	4	4
Crescent Beach	1	1	Quesnel	2	2
Creston	2	2	Revelstoke	3	3
Cumberland	2	2	Rivers Inlet	1	1
Deep Bay	1	1	Rose Lake	1	1
Deroche	1	1	Saanich	2	1	3
Duncan	1	1	Salmon Arm	4	2	6
Eburne	3	3	Sardis	1	1	2
Fawn	1	1	Sechelt	1	1
Fernie	1	2	3	Shawnigan Lake	1	1
Gabriel Island	1	1	Shuswap	1	1
Gibson's Landing	1	1	Smithers	1	1
Giscome	1	1	Sointula	1	1
Glade	1	1	Sorrento	1	1
Grand Forks	1	1	2	Sperling	1	1
Grindrod	1	1	St. Peter's Springs	1	1
Hazelton	1	1	Steveston	1	1	2
Hedley	2	1	3	Stewart	2	2
Jaffray	1	1	Summerland	1	1	2
Kamloops	6	3	9	Texada Island	1	1
Kaslo	3	1	4	Trail	2	2
Kelowna	3	2	5	Vananda	1	1
Keremeos	1	1	Vancouver	137	98	235
Kimberley	1	1	Vancouver, North	7	2	9
Kitkatla Reserve	1	1	Vancouver, South	2	4	6
Ladner	1	1	Vancouver, West	2	2
Laidlaw	1	1	Vernon	3	1	4
Langley	2	2	Victoria	16	27	43
Lulu Island	1	1	Westholm	1	1
Lumby	1	1	Williams Lake	1	1
Lytton	1	1	Wiltmer	1	1
Maillardville	2	2	Wilson Creek	1	1
Matsqui	1	1	2	Yukon Territory	2	2
<i>Carried forward...</i>	73	41	114	Totals	328	215	543

TABLE No. 9.—SHOWING THE OCCUPATIONS OF THOSE ADMITTED FROM APRIL 1ST, 1928, TO MARCH 31ST, 1929.

Occupation.	Male.	Female.	Total.	Occupation.	Male.	Female.	Total.
Accountant	1	1	<i>Brought forward</i>	224	141	365
Baker	2	2	Medical student	1	1
Blacksmith	2	2	Miner	14	14
Book-keeper	2	2	None	35	53	88
Cannery manager	1	1	Orchardist	1	1
Carpenter	6	6	Painter	2	2
Civil engineer	2	2	Photographer	1	1
Clerk	9	1	10	Physician	1	1
Confectioner	1	1	Piano-tuner	2	2
Contractor	2	2	Porter	1	1
Cook	4	1	5	Radio operator	1	1
Dairyman	1	1	Retired	5	1	6
Draughtsman	1	1	Riveter	1	1
Dressmaker	2	2	Saddler	1	1
Druggist	1	1	Sailor	6	6
Electrician	1	1	Salesman	5	5
Elevator operator	1	1	School-teacher	1	1
Engineer	3	3	Servant	11	11
Farmer	25	25	Shepherd	1	1
Fireman	1	1	Sheriff	1	1
Fisherman	9	9	Shipwright	1	1
Gardener	1	1	Stenographer	4	4
Housekeeper	7	7	Storekeeper	1	1
Housewife	130	130	Student	1	1
Interpreter	1	1	Surveyor	1	1
Janitor	1	1	Tailor	3	3
Journalist	1	1	Teamster	4	4
Labourer	116	116	Telegraph operator	1	1
Lather	1	1	Tinsmith	1	1
Lineman	1	1	Train-dispatcher	1	1
Locomotive engineer	1	1	Trapper	2	2
Logger	15	15	Truck-driver	1	1
Longshoreman	5	5	Typesetter	1	1
Lumberman	2	2	Unknown	4	4
Machinist	1	1	Waiter	3	1	4
Manager	1	1	Warehouseman	1	1
Marine engineer	1	1	Wharf foreman	1	1
Master mariner	1	1	Wood merchant	1	1
<i>Carried forward</i>	224	141	365	Totals	328	215	543

TABLE NO 10 —SHOWING THE AGES OF THOSE ADMITTED FROM APRIL 1ST, 1928, TO MARCH 31ST, 1929

Age	Male	Female	Total.
Under 15 years	8	9	17
" 20 "	13	14	27
" 25 "	28	15	43
" 30 "	30	20	50
" 35 "	25	20	45
" 40 "	27	23	50
" 45 "	48	23	71
" 50 "	30	31	61
" 55 "	35	18	53
" 60 "	27	12	39
" 65 "	14	10	24
" 70 "	18	7	25
" 75 "	12	7	19
" 80 "	8	3	11
Over 80 "	5	3	8
Totals	328	215	543

TABLE NO 11 —SHOWING THE NUMBER OF ATTACKS IN THOSE ADMITTED FROM APRIL 1ST, 1928, TO MARCH 31ST, 1929

Number of Attacks	Male	Female	Total
First	157	135	292
Second	32	28	60
Third	8	9	17
Fourth	2	1	3
Several	5	5	10
Not insane		1	1
Unknown	124	36	160
Totals	328	215	543

TABLE NO 12 —SHOWING THE ALLEGED DURATION OF ATTACK PRIOR TO ADMISSION FROM APRIL 1ST, 1928, TO MARCH 31ST, 1929

Duration of Attack	Male	Female	Total
Under 1 week	37	28	65
" 1 month	55	24	79
" 3 months	32	26	58
" 6 "	12	5	17
" 12 "	10	10	20
" 2 years	10	9	19
" 5 "	8	12	20
" 10 "	6	13	19
" 15 "	2	4	6
Over 15 "	11	6	17
Not insane		1	1
Unknown	145	77	222
Totals	328	215	543

TABLE No 13—SHOWING STATISTICS OF HEREDITY IN THOSE ADMITTED FROM APRIL 1ST, 1928, TO MARCH 31ST, 1929

Heredity	Male	Female	Total
Paternal branch		3	3
Maternal branch	1	6	7
Heredity	80	57	137
Heredity inferred	19	28	47
Heredity unknown	228	120	348
Not insane		1	1
Totals	328	215	543

TABLE No 14—SHOWING THE ALLEGED CAUSE OF ATTACK IN THOSE ADMITTED FROM APRIL 1ST, 1928, TO MARCH 31ST, 1929

Alleged Cause	Male	Female	Total
Alcohol	25	3	28
Arteriosclerosis	11	10	21
Cardiac	1		1
Constitutional	110	51	161
Epilepsy	3		3
Heredity	80	57	137
Heredity, inferred	19	28	47
Heredity, maternal	1	6	7
Heredity paternal		3	3
Lues	30	6	36
Morphine	1	1	2
Not insane		1	1
Senility	36	17	53
Somatic	5	4	9
Traumatic	5	1	6
Unknown		2	2
Wastriam	1		1
Worry		25	25
Totals	328	215	543

TABLE No 15—SHOWING THE STATE OF BODILY HEALTH IN THOSE ADMITTED FROM APRIL 1ST, 1928, TO MARCH 31ST, 1929

Bodily Condition	Male	Female	Total
In good health	138	88	226
In average health	155	100	255
In reduced health	55	27	82
Totals	328	215	543

TABLE NO 16 —SHOWING THE FORM OF MENTAL DISORDER IN THOSE ADMITTED FROM APRIL 1ST, 1928, TO MARCH 31ST, 1929

Form of Disorder	Male	Female	Total
Acute mania	5	8	13
Alcoholic pseudo paresis	1	1	2
Alcoholic psychosis	21	2	23
Arteriosclerotic dementia	11	6	17
Cerebrospinal lues	1	3	4
Dementia præcox	88	51	139
Epileptic	13	4	17
General paresis	28	3	31
Hypomania		1	1
Imbecility and idiocy	23	21	44
Involuntional melancholia	2	4	6
Manic depressive	67	77	144
Moron	2		2
Not insane		1	1
Paranoia	10	6	16
Psychasthenia	1		1
Psychoneurosis	2		2
Senile dementia	38	20	58
Somatic disease and psychosis	8	6	14
Toxic psychosis	3	1	4
Traumatic psychosis	4		4
Totals	128	215	543

TABLE NO 17A —SHOWING THE NUMBER ALLOWED OUT ON PROBATION AND RESULTS FROM APRIL 1ST, 1928, TO MARCH 31ST, 1929, ESSONDALE

Results	Male	Female	Total
Discharged recovered	46	23	69
Discharged improved	82	32	114
Discharged unimproved	27	8	35
Not insane		1	1
Returned to Hospital	18	10	28
Still out at the close of the year	52	36	88
Totals	225	110	335

TABLE NO 17B —SHOWING THE NUMBER ALLOWED OUT ON PROBATION AND RESULTS FROM APRIL 1ST, 1928 TO MARCH 31ST 1929 NEW WESTMINSTER

Results	Male	Female	Total
Discharged recovered	5	16	21
Discharged improved	2	15	17
Discharged unimproved	2	5	7
Returned to Hospital	1	16	17
Still out at the close of the year	4	18	22
Totals	14	70	84

TABLE No 17C—SHOWING THE NUMBER ALLOWED OUT ON PROBATION AND RESULTS FROM APRIL 1ST, 1928, TO MARCH 31ST, 1929, SAANICH

Results	Male	Female	Total
Discharged recovered	1		1
Discharged improved	6		6
Discharged unimproved	1		1
Still out at the close of the year	1		1
Totals	9		9

TABLE No 18A—SHOWING THE ALLEGED DURATION OF INSANITY PRIOR TO ADMISSION IN THOSE DISCHARGED FROM ESSONDALE FROM APRIL 1ST, 1928, TO MARCH 31ST, 1929

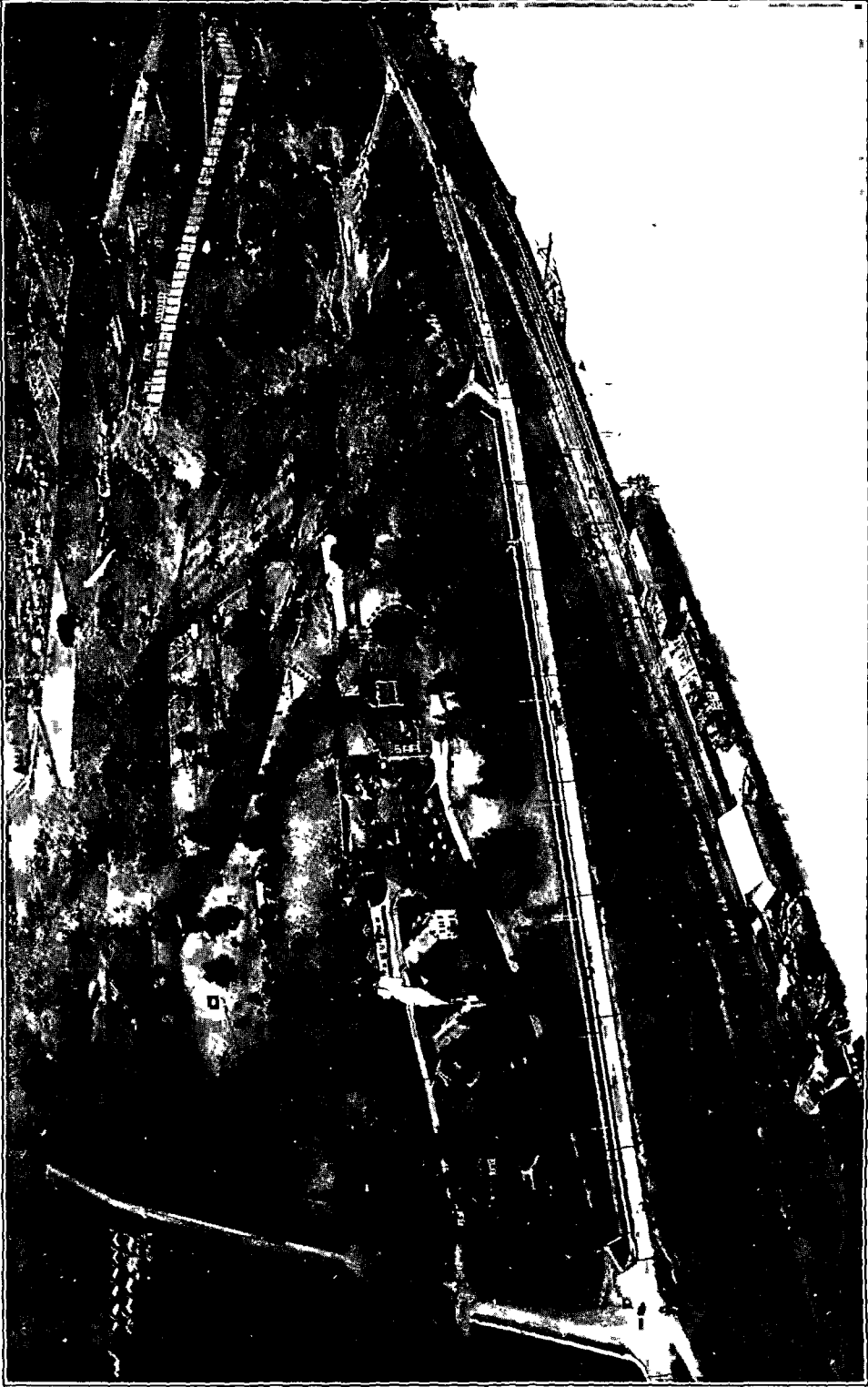
Duration of Insanity	Male	Female	Total
Less than 1 week	36	9	45
„ 1 month	30	16	46
„ 2 months	12	5	17
„ 3 „	5	3	8
„ 6 „	7	4	11
„ 12 „	12	1	13
„ 2 years	1	4	5
„ 3 „		2	2
3 years and over	7	4	11
Not insane		1	1
Unknown	45	15	60
Totals	155	64	219

TABLE No 18B—SHOWING THE ALLEGED DURATION OF INSANITY PRIOR TO ADMISSION IN THOSE DISCHARGED FROM NEW WESTMINSTER FROM APRIL 1ST, 1928, TO MARCH 31ST, 1929

Duration of Insanity	Male	Female	Total
Less than 1 week	1	7	8
„ 1 month	2	2	14
„ 2 months	2	3	5
„ 3 „	2	1	3
„ 6 „		4	4
„ 12 „		2	2
„ 2 years		2	2
„ 3 years	1	5	6
Unknown	1		1
Totals	9	36	45

TABLE No 18C—SHOWING THE ALLEGED DURATION OF INSANITY PRIOR TO ADMISSION IN THOSE DISCHARGED FROM SAANICH FROM APRIL 1ST, 1928, TO MARCH 31ST, 1929

Duration of Insanity	Male	Female	Total
Less than 1 month	2		2
„ 6 months	2		2
„ 2 years	2		2
Over 3 years	1		1
Unknown	1		1
Totals	8		8



PUBLIC HOSPITAL FOR THE INSANE, NEW WESTMINSTER, FROM THE AIR, LOOKING NORTH.

TABLE No 19A—SHOWING THE LENGTH OF RESIDENCE OF THOSE DISCHARGED FROM
ESSONDALE FROM APRIL 1ST, 1928, TO MARCH 31ST, 1929

Length of Residence	DISCHARGED RECOVERED		DISCHARGED IMPROVED		DISCHARGED UNIMPROVED		NOT INSANE	
	Male	Female	Male	Female	Male	Female	Male	Female
Under 1 month		1	5	1		3		
" 2 months	9	4	4	4	1	2		
" 3 "	9	4	13	8	6			
" 6 "	10	12	24	10	8	1		
" 9 "	5	2	13	6	2	1		
" 12 "	5		7	1	4			1
" 2 years	6		8	1	2	1		
" 3 "			2	1	1			
" 4 "			2		2			
" 5 "	1							
5 years and over	1		4		1			
Totals	46	23	82	32	27	8		1

TABLE No 19B—SHOWING THE LENGTH OF RESIDENCE OF THOSE DISCHARGED FROM
NEW WESTMINSTER FROM APRIL 1ST, 1928, TO MARCH 31ST, 1929

Length of Residence	DISCHARGED RECOVERED		DISCHARGED IMPROVED		DISCHARGED UNIMPROVED		NOT INSANE	
	Male	Female	Male	Female	Male	Female	Male	Female
Under 1 month								
" 2 months								
" 3 "		1						
" 6 "	1	4		1		1		
" 9 "	1	2		2		2		
" 12 "	2	4						
" 2 years			1	4		1		
" 3 "	1	2		3	2			
" 4 "		1		1		1		
" 5 "				1				
5 years and over			1	3				
Totals	5	16	2	15	2	5		

TABLE No 19C—SHOWING THE LENGTH OF RESIDENCE OF THOSE DISCHARGED FROM
SAANICH FROM APRIL 1ST, 1928, TO MARCH 31ST, 1929

Length of Residence	DISCHARGED RECOVERED		DISCHARGED IMPROVED		DISCHARGED UNIMPROVED		NOT INSANE	
	Male	Female	Male	Female	Male	Female	Male	Female
Under 6 months			1					
" 2 years	1		1					
" 3 "			1					
" 4 "			1					
5 years and over			2		1			
Totals	1		6		1			

TABLE NO. 20.—RECORD OF DEATHS FROM APRIL 1ST, 1928, TO MARCH 31ST, 1929,
ESSONDALE, NEW WESTMINSTER, AND SAANICH—Continued.

(a.) Essondale—Continued.

Register No.	Initials.	Sex.	Age.	TIME IN HOSPITAL.			Certified Cause.
				Years.	Months.	Days.	
1599	J. H.	M.	64	23	6	2	Hypertrophic cirrhosis of liver.
10323	O. A. B.	M.	73	9	Exhaustion of arteriosclerotic dementia.
10271	E. I.	F.	29	1	19	Chronic ulcerative phthisis; tuberculous bronchopneumonia.
10081	J. D.	M.	38	7	Acute gastroenteritis; exhaustion of dementia præcox.
10301	C. N.	F.	45	1	10	Chronic myocarditis.
10230	A. C.	M.	62	3	6	Osteomyelitis of the radius and ulna.
10225	D. G. P.	M.	19	3	10	Pulmonary tuberculosis.
10365	H. D.	F.	75	7	Chronic myocarditis; arteriosclerosis.
8553	H. A.	M.	74	3	7	7	Cerebral hæmorrhage.
10185	J. Mc.	M.	71	4	18	Banti's disease.
10358	S. W.	M.	47	21	Diabetes mellitus.
9665	P. A. A.	M.	63	1	4	17	Exhaustion of senile dementia.
388	N. Mc.	M.	73	37	11	18	Arteriosclerosis.
10381	T. F. N.	M.	56	21	Exhaustion of general paresis.
10060	W. S.	M.	76	8	1	Exhaustion of senile dementia; chronic myocarditis.
10385	F. A.	M.	53	25	Arteriosclerosis and hypertension.
10400	S. K.	F.	49	17	Exhaustion of acute mania; myocarditis.
10378	J. S. G.	F.	27	1	5	Exhaustion of acute mania.
10413	E. C.	F.	49	11	Bronchopneumonia; exhaustion of mania; depressive and acute maxillary abscess.
5442	J. S.	M.	62	10	7	29	Exhaustion of cerebrospinal syphilis.
1719	R. P.	M.	52	22	9	12	Bronchopneumonia.
10447	W. A. M.	M.	29	11	Exhaustion of acute mania.
1346	B. L.	M.	52	25	10	Chronic myocarditis; arteriosclerosis.
10450	B. B.	M.	31	10	Exhaustion of general paresis.
10449	K. B.	M.	68	12	Exhaustion of arteriosclerotic dementia.
5016	A. H.	M.	72	11	10	9	Exhaustion of traumatic psychosis.
10454	C. D.	F.	92	23	Arteriosclerosis and myocarditis.
10483	J. B.	M.	69	8	Bronchopneumonia.
10466	D. R.	F.	41	16	Exhaustion of acute mania.
10478	E. B.	M.	57	17	Exhaustion of acute mania; pernicious anæmia.
10019	J. B.	M.	69	10	23	Exhaustion of senile dementia; arteriosclerosis.
10172	W. S. C.	M.	32	7	21	Exhaustion of general paresis.
7422	R. C.	M.	64	6	19	Arteriosclerosis; chronic myocarditis.
3130	F. W. K.	M.	51	17	9	Exhaustion of terminal dementia.
10504	V. R.	M.	55	11	Exhaustion of general paresis.
10514	P. D.	M.	75	5	Arteriosclerosis; myocarditis; bronchopneumonia.
10520	M. J. B.	F.	52	1	Chronic glomerular nephritis; arteriosclerosis; myocarditis.
9573	J. G. O.	M.	88	1	9	9	Exhaustion of senile dementia.
10387	E. Mc.	F.	73	3	10	Myocarditis; exhaustion of arteriosclerotic dementia.
10226	J. N. P.	M.	14	6	30	Pulmonary tuberculosis.
10532	E. T. C.	M.	27	9	Exhaustion of acute mania.
5343	S. B.	M.	49	11	30	Pulmonary tuberculosis.
1816	J. A. C.	M.	46	22	3	19	Tuberculous shoulder-joint; pulmonary tuberculosis.
10537	L. C.	M.	30	10	Exhaustion of acute mania.
2386	J. W.	M.	59	19	8	4	Chronic myocarditis; arteriosclerosis.
8565	P. G.	M.	39	3	10	27	Pulmonary tuberculosis; intestinal tuberculosis.

TABLE NO. 20.—RECORD OF DEATHS FROM APRIL 1ST, 1928, TO MARCH 31ST, 1929,
ESSONDALE, NEW WESTMINSTER, AND SAANICH—Continued.

(a.) Essondale—Continued.

Register No.	Initials.	Sex.	Age.	TIME IN HOSPITAL.			Certified Cause.
				Years.	Months.	Days.	
5393	S. T.	M.	33	10	11	24	Pulmonary tuberculosis.
2779	J. L.	M.	49	18	2	8	Bronchopneumonia; influenza.
10361	P. F.	M.	68	4	15	Chronic myocarditis; arteriosclerosis.
10327	L. G.	M.	19	5	10	Pulmonary tuberculosis.
7345	T. B.	M.	47	6	8	7	Carcinoma of the sigmoid; metastasis in the liver.
7358	T. F. P.	M.	18	6	7	30	Pulmonary tuberculosis.
9859	A. H. H.	M.	66	1	4	8	Cerebral hæmorrhage.
9685	B. L. B.	M.	4	1	8	8	Exhaustion hydrocephalic idiot.
9413	C. H.	M.	40	2	3	1	Pulmonary tuberculosis; tubercular adenitis.
10566	A. C.	F.	18	14	Exhaustion of acute mania.
10032	J. M. G.	F.	42	1	8	Arthritis; exhaustion toxic psychosis.
9135	H. M.	M.	75	2	9	17	Myocarditis; arteriosclerosis.
7833	J. M.	M.	81	5	7	1	Exhaustion of senile dementia.
10559	C. F. L. Mc	M.	33	26	Exhaustion of general paresis.
8665	J. M.	M.	34	3	9	16	Exhaustion of epilepsy.
10578	R. J.	F.	40	16	Exhaustion of toxic psychosis.
10588	E. A. D.	F.	46	8	Exhaustion of manic depressive psychosis.
10306	A. H. J.	M.	44	6	24	Exhaustion of general paresis.
2793	C. L.	M.	50	18	3	19	Carcinoma of the cæcum.
10286	E. A. K.	M.	43	7	9	Acute pneumonic phthisis.
7527	M. C.	M.	39	6	4	8	Progressive muscular atrophy; exhaustion of somatic psychosis.
9141	W. P.	M.	18	2	9	30	Pulmonary tuberculosis.
10563	J. S.	M.	40	1	8	Exhaustion of general paresis.
9584	A. H.	M.	78	1	11	23	Paralysis agitans; exhaustion of senile dementia.
6682	S. S.	M.	43	8	2	6	Pulmonary tuberculosis.
2986	W. P. B.	M.	60	17	7	6	Arteriosclerosis; myocarditis.
10338	R. L.	M.	74	6	24	Chronic myocarditis; arteriosclerosis.
6815	C. A.	M.	69	7	11	6	Exhaustion of senile dementia.
10212	B. S.	M.	44	9	17	Exhaustion of general paresis.
8445	S. B.	M.	44	4	3	22	Pulmonary tuberculosis.
10141	J. D.	M.	84	11	14	Exhaustion of senile dementia.
9184	P. R.	M.	65	2	9	19	Cerebral hæmorrhage; erysipelas.
10661	M. K.	F.	16	5	Exhaustion of acute mania.
10647	S. M. D.	M.	84	15	Chronic myocarditis; exhaustion of senile dementia.
10660	J. R. C. O.	M.	68	10	Exhaustion of arteriosclerotic dementia.
8504	F. O.	M.	55	4	2	18	Exhaustion of cerebrospinal lues.
10662	M. M.	M.	76	12	Exhaustion of senile dementia.

(b.) New Westminster.

9954	P. M.	F.	91	3	26	Chronic myocarditis.
8188	D. D.	F.	42	3	11	10	Pulmonary tuberculosis.
8505	M. B.	F.	32	3	3	3	Pulmonary tuberculosis.
9858	E. M. McK.	F.	44	7	1	Hypernephroma.
8605	C. H.	F.	86	3	1	8	Chronic myocarditis.
9453	A. E. S.	F.	83	1	4	20	Chronic myocarditis.
9221	J. McL.	F.	34	1	10	12	Suicide by hanging.
9693	C. E. McG.	F.	50	11	22	Pulmonary tuberculosis.
6753	E. B.	F.	40	7	2	26	Ovarian cancer.
5790	N. L.	F.	37	9	3	12	Pulmonary tuberculosis.

TABLE No 20—RECORD OF DEATHS FROM APRIL 1ST, 1928, TO MARCH 31ST, 1929,
ESSONDAIE, NEW WESTMINSTER, AND SAANICH—Continued

(b) New Westminster—Continued

Register No	Initials	Sex	Age	TIME IN HOSPITAL			Certified Cause
				Years	Months	Days	
9684	E C	F	61	1		20	Exhaustion of arteriosclerosis
6489	E S	F	63	7	10	18	Hypostatic pneumonia
5317	A J P	F	78	10	7	13	Carcinoma of colon
9668	M S	F	18	1	1	28	Tubercular peritonitis
3559	E B	F	67	15	5	15	Hypostatic pneumonia, cerebral hemorrhage
9147	R A C	F	72	2	2	23	Myocarditis
2383	R A	F	69	19	3	26	Chronic myocarditis
10152	H W	F	75		4	18	Bronchial pneumonia
7597	M C	F	47	5	9		Carcinoma of uterus pyelonephritis, R
9675	M R D	F	65	1	4	7	Pyæmia, contributory foci
10393	E L	F	59			16	Cerebral embolism
9930	F C	F	72		10	17	Hypostatic pneumonia
9751	M E S	F	83	5		13	Cerebral hemorrhage
6409	A M F	F	40	8	4	14	Acute myocarditis
7221	E R S	F	44	6	8		Pulmonary tuberculosis
10288	M S B	F	59		3	26	Bronchial pneumonia
10305	E S	F	39		3	14	Burns buttocks and heels toxæmia
7880	C McI	F	71	5	3	17	Chronic myocarditis
9670	C M J F	F	55	1	7	4	Exhaustion of arteriosclerosis
8120	A A D	F	35	4	9	26	Pulmonary tuberculosis
9778	S P	F	69	1	5	6	Chronic myocarditis
8576	M I McC	F	61	3	10	6	Bronchopneumonia
4905	M A McD	F	71	12	4	6	Bronchopneumonia
9902	M T	F	50	1	3	2	Cerebral hemorrhage
9557	J E B	F	19	3	3		Status epilepticus
10356	F W M	F	71		5	22	Exhaustion of senile dementia
782	A K	F	56	31	3	28	Acute myocarditis
10397	N K M	F	14		5	12	General tuberculosis
9388	J N McD	F	55	2	5	4	Bronchopneumonia

(c) Saanich

5103	J S	M	79	11		26	Phthisis pulmonitis
9561	J M P	M	51	1	9	22	Exhaustion of epilepsy
4909	C C	M	40	12		6	Exhaustion of epilepsy
2434	J D	M	72	19	6	13	Nephritis pyelitis
2918	W C S	M	53	17	9	11	Bronchitis
1770	C R	M	65	22	9	20	Perforation of carcinoma of stomach

TABLE NO. 21.—SHOWING THE NUMBER OF DEPORTATIONS EFFECTED FROM APRIL 1ST, 1928, TO MARCH 31ST, 1929, ESSONDALE, NEW WESTMINSTER, AND SAANICH.

Register No.	Initials.	Sex.	Country of Origin.	PERIOD IN CANADA PRIOR TO ADMISSION TO HOSPITAL.			PERIOD IN HOSPITAL.		
				Years.	Months.	Days.	Years.	Months.	Days.
10132	M. E. J.	F.	England.....	9	17	8
10023	T. W. R.	M.	Wales.....	1	10	3	2
10018	A. L.	F.	Australia.....	8	3	11
9886	V. L. O.	F.	England.....	3	6	6	25
9878	P. M.	M.	Italy.....	5	7
10069	M. N.	M.	Japan.....	3	2	27
10158	R. M.	M.	Austria.....	3	1	7
9815	L. P.	M.	Finland.....	3	9	3
9970	O. M.	M.	Serbia.....	1	4	11	5	5
10003	R. I.	M.	Norway.....	3	8	4	22
10133	T. Q.	M.	England.....	8	26	2	10
9723	M. P.	M.	Poland.....	2	8	11	1
10163	M. W.	M.	Finland.....	1	9	22	2	18
10025	A. C.	M.	Italy.....	5	5	16
10180	I. W.	M.	Sweden.....	4	6	10	2	26
9741	T. C. G.	M.	Ireland.....	5	5	1	27
9871	H. C.	M.	United States.....	1	6	10	17
10237	H. C. K.	M.	United States.....	8	2	9
10234	I. B.	M.	Finland.....	4	8	2	16
10224	C. R.	M.	Germany.....	1	2	22
9782	A. K.	F.	Japan.....	4	11	1	28
10189	S. D. S.	M.	Greece.....	3	8	3	25
9616	L. W.	M.	England.....	7	2	10	1	4	16
10249	F. J. G.	F.	England.....	1	2	10
10217	A. L.	M.	Sweden.....	4	9	3	9
10251	R. D. B.	M.	England.....	16	2	26
10265	E. E.	M.	Sweden.....	1	11	24	3	6
10253	R. M.	M.	Scotland.....	11	3	21
10267	T. W.	M.	England.....	1	12	3	20
9933	T. H.	M.	Poland.....	2	3	1	23
9963	W. G.	M.	England.....	5	10	11
10376	F. F.	M.	Finland.....	2	1	30	1	28
10367	R. A.	M.	Jugo-Slavia.....	2	4	2	7
10406	A. O.	M.	Sweden.....	4	11	2	1
10431	A. R.	F.	Scotland.....	1	7	4	10
10264	A. S.	M.	Switzerland.....	1	3	3	6	23
10004	O. O.	M.	Norway.....	3	10	1	18
10484	J. J.	M.	Norway.....	1	5	17	2	5
10470	V. K.	M.	Finland.....	2	7	2	11
10350	E. L.	M.	Germany.....	11	5	21
10394	J. T.	M.	Scotland.....	1	1	5	8
10475	E. W.	M.	England.....	3	27	3	10
10377	E. K.	M.	Lithuania.....	2	2	14	5	16
10493	E. W. D.	M.	England.....	1	1	3	18
10282	J. F.	M.	Jugo-Slavia.....	2	2	23	8	17
10604	W. B.	M.	China.....	3	5	1	10
10119	R. F.	F.	England.....	2	7	5	6
10026	C. T.	M.	Holland.....	3	9	3	10

PART II.—FINANCIAL.

BURSAR'S REPORT.

ESSONDALE, B.C., April 1st, 1929.

A. L. Crease, Esq., M.D., C.M.,
General Medical Superintendent of Mental Hospitals,
Essondale, B.C.

SIR,—I beg to submit herewith balance-sheets, profit and loss sheets, and various other statements which cover the financial operations of the Provincial Mental Hospitals of British Columbia for the fiscal year ended March 31st, 1929.

Revenue.—The total revenue received from all sources on account of maintenance of patients totalled \$132,239.32, as compared with last year's receipts of \$122,554.16, an increase of \$9,685.16, or about 7½ per cent. This increase was gratifying, especially after our 20-per-cent. increase of last year, which we had to maintain and exceed.

Expenditures.—Referring to our gross expenditures for the fiscal year under review, please refer to Table D, in which you will note that the total gross expenditure for the three institutions amounted to \$863,229.96. The former year totalled \$783,185.80, or a total increase of \$80,044.16. An analysis of this increase will show it principally to be made up under the following headings: Salaries, provisions (due to increased menu for morning and evening meals), furniture, and fixtures.

Included in this increase are many expenditures in connection with the improvements to buildings and grounds, together with the new method of handling patients in the Acute Building and the new Male Infirmity Ward.

The total daily average population for the three institutions, of 2,293.61, shows a net *per capita* cost of \$318.70 per year, or 87¼ cents per day.

For minute details as to the expenditures of the various hospitals segregated under headings, I would refer you to Tables A, B 1, and C 1, also E, F, and G.

All of which is respectfully submitted.

GOWAN MACGOWAN,
Bursar.

PUBLIC HOSPITAL FOR INSANE, NEW WESTMINSTER.

BALANCE-SHEET MARCH 31ST, 1929

Assets

Land		\$80 000 00
Cemetery		610 89
Buildings		497,134 20
Plant and equipment		21,200 82
Furniture and fixtures		17,900 00
Inventories (unissued stores)—		
Provisions	\$4,392 48	
Fuel	212 80	
Furniture and fixtures	3,320 34	
Maintenance and repairs	3 061 51	
Clothing	5,202 17	
Miscellaneous	49 00	
		<u>16 238 30</u>
Deficit (cost of operations, 1928-29)		172,344 43
		<u><u>\$805,428 64</u></u>

Liabilities

Government of Province of British Columbia		\$805,428 64
		<u><u>\$805,428 64</u></u>

PROFIT AND LOSS ACCOUNT, 1928-29

Salaries	\$87 373 77	
Office supplies	1,556 70	
Travelling expenses	257 59	
Fuel water, light, and power	24 676 26	
Maintenance and repairs	7 050 51	
Furniture and fixtures	7,317 18	
Provisions	60 353 32	
Clothing	4,975 12	
Medical and surgical	1,689 16	
Examinations, committals, and transportation	8 05	
Incidentals and unforeseen	12,082 69	
Patient labour (Colony Farm)		\$1 000 00
Collections for year to Treasury		33,995 92
Net operating cost for year		172,344 43
	<u>\$207,340 35</u>	<u>\$207 340 35</u>
	<u><u>\$207,340 35</u></u>	<u><u>\$207 340 35</u></u>



PROVINCIAL MENTAL HOSPITAL (BRANCH) AT NEW WESTMINSTER, B.C.

PROVINCIAL MENTAL HOSPITAL, ESSONDALE.

BALANCE SHEET, MARCH 31ST, 1929

Assets

Land		\$117,617 80
Buildings		1,801,410 66
Furniture and fixtures		113,671 97
Plant and equipment		59,016 98
Inventories (unissued stores)—		
Provisions	\$6,008 23	
Clothing	5,404 95	
Furniture and fixtures	4,350 57	
Miscellaneous	76 70	
Fuel	8,900 05	
Maintenance and repairs	5,476 24	
Medical and surgical	1,205 24	
		<u>31,421 98</u>
Deficit (cost of operations, 1928-29)		471,369 75

\$2,594 509 14

Liabilities

Government of Province of British Columbia		<u>\$2,594,509 14</u>
--	--	-----------------------

PROFIT AND LOSS ACCOUNT, 1928-29

Salaries	\$214,566 46	
Office supplies	5,175 80	
Travelling expenses	1,186 37	
Fuel, water, light, and power	57,373 31	
Maintenance and repairs	17,383 61	
Furniture and fixtures	12,087 66	
Provisions	197,249 49	
Uniforms and clothing	33,543 53	
Medical and surgical supplies	6,053 11	
Examinations, committals, and transportation	7,306 85	
Incidentals and unforeseen	25,650 10	
Collections for year to Treasury		\$88 206 54
Patient labour (Colony Farm)		18,000 00
Net operating cost for year		471,369 75
	<u>\$577,576 29</u>	<u>\$577,576 29</u>

MENTAL HOME, SAANICH.

BALANCE-SHEET, MARCH 31ST, 1929

Assets

Land		\$12,100 00
Buildings		244 564 75
Furniture and fixtures		19,278 25
Implements and stock		5,478 30
Airing and recreation courts		750 00
Inventories (unissued stores)—		
Provisions	\$680 57	
Clothing	1 940 26	
Furniture and fixtures	412 18	
Maintenance and repairs	228 57	
		<u>3,261 58</u>
Deficit (cost of operations, 1928-29)		87,276 46
		<u>\$372,709 34</u>

Liabilities

Government of Province of British Columbia		\$372,709 34
		<u><u>\$372,709 34</u></u>

PROFIT AND LOSS ACCOUNT, 1928-29

Salaries	\$33,330 41	
Office supplies	620 79	
Travelling expenses	190 52	
Fuel, water, light, and power	9,517 96	
Maintenance and repairs	10,615 59	
Furniture and fixtures	1,870 81	
Provisions	23,270 63	
Clothing	5,556 99	
Medical and surgical supplies	717 32	
Examinations, committals, and transportation	137 15	
Incidentals and unforeseen	11,485 15	
Collections for year to Treasury		\$10,036 86
Net cost of operations		<u>87,276 46</u>
	<u>\$97,313 32</u>	<u>\$97,313 32</u>

FINANCIAL TABLES

TABLE A—SHOWING THE AVERAGE NUMBER OF PATIENTS IN RESIDENCE EACH YEAR, THE TOTAL AMOUNTS SPENT FOR MAINTENANCE, AND THE GROSS PER CAPITA COST.

Year	Average Number in Residence	Maintenance Expenditure	Per Capita Cost
1872 (81 days)	16 57	2 265 25	\$616 00
1873	16 07	7 841 64	487 98
1874	16 76	8 252 41	491 20
1875	27 42	9 892 38	360 77
1876	6 41	12 558 18	344 01
1877	54 61	12 917 17	373 26
1878	36 52	15 085 05	382 93
1879	8 17	10 253 72	268 63
1880	45 42	10 552 18	2 2 2
1881	47 18	10 691 76	226 62
1882	47 86	11 343 65	237 02
1883	48 75	11 829 11	242 75
1884	48 70	11 843 94	245 20
1885	54 67	15 555 87	284 54
1886	59 11	15 534 45	259 42
1887	73 55	15 945 22	216 70
1888	79 4	16 261 06	204 72
1889	71 50	15 657 79	219 60
1890	78 78	17 577 80	223 15
1891	119 87	21 757 03	181 50
1892	125 24	25 518 57	187 80
1893	133 92	25 304 98	193 36
1894	148 64	26 495 83	178 25
1895	162 97	31 587 89	193 83
1896	171 4	32 001 40	186 67
1897	158 31	36 224 76	191 75
1898	216 5	46 420 25	214 38
1899	226 44	54 917 45	242 52
1900	243 24	59 349 20	244 03
1901	269 56	55 406 08	205 54
1902	296 62	55 345 65	186 59
1903	322 2	59 353 57	178 65
1904	51 55	66 052 76	187 89
1905	340 90	63 342 07	185 80
1906	74 37	66 596 69	177 79
1907	419 24	74 874 64	178 59
1908	490 80	90 269 49	183 92
1909	726 85	96 586 2	183 32
1910	563 33	103 900 44	184 43
1911	641 02	126 782 50	197 78
1912	7 6 72	130 924 06	177 71
1913 M H New Westminster	550 54	119 663 71	217 36
1913 M H Lssondale (9 months)	384 07	71 079 84	184 76
1914 M H, New Westminster	487 24	125 981 45	258 56
1914 M H, Fssondale	489 07	131 420 44	268 36
1915 M H New Westminster	515 74	123 021 70	238 53
1915 M H Fssondale	560 56	123 878 43	220 99
1916 M H New Westminster	524 17	116 052 31	221 40
1916 M H Lssondale	63 13	155 698 37	245 91
1917 M H New Westminster	555 66	124 124 68	231 72
1917 M H, Fssondale	716 35	166 231 51	232 05
1918 M H, New Westminster	585 8	156 174 85	267 47
1918 M H, Fssondale	752 78	222 097 37	295 03
1919-20 M H New Westminster (15 months)	562 12	236 631 90	420 97
1919 20 M H Fssondale (15 months)	755 46	357 650 99	475 38
1919-20 M H Saanich (373 days)	90 51	40 435 28	446 72
1920-21 M H New Westminster	567 47	233 486 76	415 21
1920-21, M H, Fssondale	8 4 10	336 585 35	403 52
1920-21 M H Saanich	108 67	51 995 87	478 47
1921-22 M H New Westminster	596 07	210 887 45	353 79
1921-22 M H Fssondale	890 32	521 150 35	360 71
1921-22 M H Saanich	120 05	47 860 96	398 67
1922-23, M H New Westminster	60 40	214 672 13	355 77
1922-23, M H, Fssondale	942 60	512 975 52	332 01
1922-23 M H, Saanich	127 57	47 215 01	370 11
1923-24 M H New Westminster	628 85	219 277 02	348 69
1923-24 M H Lssondale	96 83	334 227 9	346 76
1923-24 M H, Saanich	139 69	53 597 29	383 68
1924-25 M H, New Westminster	620 23	201 023 79	324 11
1924-25 M H, Lssondale	1 046 78	385 160 68	367 94
1924-25 M H, Saanich	156 28	58 715 33	375 70
1925-26 M H New Westminster	612 28	182 864 26	298 66
1925-26 M H, Lssondale	1 151 21	434 409 02	394 72
1925-26 M H, Saanich	164 55	59 792 32	363 37
1926-27 M H, New Westminster	652 98	185 894 70	283 92
1926-27 M H, Lssondale	1 238 81	489 843 33	395 41
1926-27 M H, Saanich	172 99	67 795 28	391 90
1927-28 M H New Westminster	667 33	195 215 68	292 53
1927-28 M H, Lssondale	1 302 77	522 430 46	401 01
1927-28 M H, Saanich	221 41	84 539 66	381 82
1928-29 M H New Westminster	701 22	207 349 35	295 68
1928-29 M H, Lssondale	1 363 42	577 576 29	423 62
1928-29 M H Saanich	228 96	97 313 32	425 02

TABLE B.—SHOWING ANALYSIS OF THE PER CAPITA COST.

Year.	Salaries.	Provisions.	Clothing.	Fuel and Light.	Furniture.	Medicines.	Miscellaneous.	Total.
1872.....	\$279 38	\$184 03	\$55 81	\$22 44	\$15 55	\$10 18	\$49 30	\$616 69
1873.....	221 48	166 81	14 55	23 65	21 59	7 74	32 16	487 98
1874.....	231 10	152 10	22 07	23 98	28 36	7 78	25 81	491 20
1875.....	153 82	113 40	13 98	16 88	25 45	6 73	30 51	360 77
1876.....	143 34	114 45	18 68	22 75	17 90	2 86	24 93	344 91
1877.....	177 15	126 75	20 69	4 66	20 75	3 74	19 52	373 26
1878.....	176 16	124 23	30 43	13 94	7 20	9 16	21 82	382 93
1879.....	134 27	95 10	3 25	15 91	6 39	6 31	7 40	268 63
1880.....	111 84	87 71	5 74	14 06	6 00	3 63	3 34	332 32
1881.....	112 44	81 14	6 86	12 73	5 55	2 56	5 34	226 62
1882.....	121 51	84 52	7 05	12 30	4 54	3 49	3 61	237 02
1883.....	123 81	92 56	6 03	11 04	4 26	2 24	2 82	242 75
1884.....	124 02	90 64	7 03	12 43	4 14	2 77	2 18	243 20
1885.....	169 05	84 33	6 33	15 05	3 90	2 93	2 95	284 54
1886.....	159 03	69 35	5 49	16 20	3 72	1 59	4 04	259 42
1887.....	127 80	59 10	5 88	15 38	3 88	93	3 81	216 78
1888.....	118 34	60 47	4 41	13 90	3 11	2 09	2 40	204 72
1889.....	131 76	59 11	7 20	12 93	4 13	2 07	2 46	219 60
1890.....	121 54	62 77	9 02	17 31	4 00	1 29	7 19	223 10
1891.....	88 35	54 79	3 83	20 43	3 40	1 89	8 81	181 52
1892.....	94 25	56 74	4 69	20 53	3 35	1 80	6 42	187 80
1893.....	95 50	53 55	5 43	22 60	3 39	2 69	10 20	193 36
1894.....	87 76	57 07	5 25	18 83	2 98	1 43	4 93	178 25
1895.....	90 83	61 15	9 90	20 41	2 51	3 10	5 93	193 83
1896.....	89 13	55 93	6 30	20 29	2 56	3 63	8 83	186 67
1897.....	89 09	58 18	8 36	19 11	2 95	3 86	10 20	191 75
1898.....	94 68	69 43	9 94	21 82	2 76	5 12	10 62	214 37
1899.....	113 31	72 91	8 31	33 96	2 50	2 73	8 80	242 52
1900.....	116 04	72 62	9 06	32 10	2 15	1 71	10 32	244 00
1901.....	99 16	66 65	10 12	18 52	3 25	1 07	6 77	205 54
1902.....	87 47	61 13	7 95	15 25	4 13	1 20	9 46	186 59
1903.....	82 36	57 86	8 58	14 77	3 24	1 91	9 93	178 65
1904.....	87 43	60 01	6 85	17 84	4 48	2 10	9 18	187 89
1905.....	92 17	54 09	5 99	17 93	3 83	2 03	9 76	185 80
1906.....	88 76	53 15	5 16	15 92	3 57	1 21	10 02	177 79
1907.....	89 18	48 47	5 81	19 82	3 02	1 57	10 72	178 59
1908.....	90 93	49 17	6 61	17 63	4 56	1 79	13 23	183 92
1909.....	94 27	53 41	8 16	13 02	2 78	84	10 84	183 32
1910.....	95 97	48 43	7 87	21 32	2 02	1 15	7 67	184 43
1911.....	97 44	58 08	9 39	18 84	1 12	1 87	11 04	197 78
1912.....	78 40	56 37	10 09	19 36	1 79	1 50	10 20	177 71
1913, M.H., New West.	102 37	54 07	9 43	25 27	4 74	3 21	18 27	217 36
1913, M.H., Essondale.	93 36	49 90	5 50	25 13	55	1 02	14 10	184 76
1914, M.H., New West.	115 72	68 15	2 99	24 13	60	2 64	44 24	258 56
1914, M.H., Essondale.	113 06	81 42	15 49	28 93	4 14	1 19	24 13	268 36
1915, M.H., New West.	110 94	64 32	7 57	20 30	1 88	33 52	238 53
1915, M.H., Essondale.	95 25	62 84	9 44	24 87	1 14	56	26 89	220 99
1916, M.H., New West.	105 89	74 96	2 58	18 52	1 45	18 00	221 40
1916, M.H., Essondale.	89 26	75 18	17 76	26 96	4 98	42	31 35	245 91
1917, M.H., New West.	103 41	72 20	10 52	18 29	2 38	24 92	231 72
1917, M.H., Essondale.	83 57	79 98	18 92	23 39	4 77	81	20 61	232 05

This accounting system discontinued in 1917, and new system installed as per Table B 1.

TABLE B.1.—SHOWING ANALYSIS OF IHL GROSS PER CAPITA COST.

Year	Salaries	Office supplies	Travelling Expenses	Fuel, Water, Light	Repairs and Renewals	Furniture and Fixtures, Bedding, etc.	Provisions	Clothing, Boots, and Slippers	Medical and Surgical Supplies	Examination, Committal, and Transportation	Incidentals and Unforeseen	Total Gross
1918, New Westminster	\$102 815	\$2 133	\$9 097	\$27 186	\$3 706	\$9 547	\$ 99 989	\$ 7 103	\$2 102	\$4 103	\$8 604	\$267 47
1918, Essondale.	96 777	3 600	0 482	33 378	5 849	8 438	118 888	17 235	1 663	0 060	9 266	295 03
1919-20, New Westminster (15 months)	168 789	4 375	0 381	45 794	19 216	10 052	133 339	5 467	5 001	14 230	13 806	430 970
1919-20, Essondale (15 months)	155 850	3 812	1 218	47 000	31 584	12 414	176 375	27 488	2 118	1 466	13 856	473 381
1919-20, Saanich (373 days)	160 550	4 954	3 372	41 927	15 894	10 336	140 601	26 270	1 931	6 183	34 708	446 726
1920-21, N. Westminster	150 462	3 535	0 513	39 685	20 993	18 365	122 845	17 638	6 392	13 549	18 069	411 446
1920-21, Essondale	132 321	3 754	1 399	35 996	21 990	13 587	147 415	35 304	3 037	0 279	5 542	403 524
1920-21, Saanich	153 924	2 070	1 783	54 736	30 275	6 654	131 475	31 359	5 173	0 140	61 481	479 470
1921-22, N. Westminster	144 045	3 970	0 497	44 814	17 728	14 369	86 339	4 389	4 696	14 916	18 000	353 793
1921-22, Essondale	129 591	3 297	1 067	40 826	22 747	13 707	107 869	30 224	3 446	0 367	7 517	360 708
1921-22, Saanich	138 346	2 969	0 733	55 268	23 679	5 737	103 156	31 713	4 031	2 370	30 669	398 671
1922-23, N. Westminster	144 877	3 494	1 239	42 666	22 433	20 444	75 445	16 629	3 709	13 563	11 871	355 770
1922-23, Essondale	127 194	2 919	1 015	41 376	15 166	8 231	102 448	24 417	3 629	0 283	5 935	332 013
1922-23, Saanich	137 779	2 158	0 407	49 071	17 080	2,501	88 571	28 202	1 914	0 180	42 247	370 110
1923-24, N. Westminster	142 955	2 732	0 276	36 929	31 064	13 200	79 364	7 694	3 547	12 059	18 875	348 695
1923-24, Essondale	128 232	3 238	0 861	44 373	16 333	10 553	108 906	26 534	3 216	0 463	4 060	348 769
1923-24, Saanich	133 649	2 698	0 545	45 671	33 747	9 539	88 960	29 984	2 237	0 747	35 890	383 687
1924-25, N. Westminster	134 322	3 565	0 314	35 649	21 817	9 577	75 248	10 616	3 871	13 720	12 352	324 111
1924-25, Essondale	128 377	3 628	0 775	44 910	24 940	7 969	109 162	28 426	5 440	0 628	13 693	367 948
1924-25, Saanich	136 865	3 685	0 484	38 149	34 031	8 607	84 704	24 712	1 682	0 684	42 082	375 705
1925-26, N. Westminster	131 961	2 438	0 481	36 481	12 309	13 866	82 072	5 692	3 411	0 036	9 914	298 661
1925-26, Essondale	143 339	3 623	0 944	47 644	20 719	7 856	126 442	21 034	4 848	6 879	11 395	394 723
1925-26, Saanich	126 389	3 218	0 765	34 378	26 027	6 322	89 641	29 856	1 609	0 371	36 581	363 368
1926-27, N. Westminster	134 600	2 488	0 489	36 192	17 248	5 116	69 030	4 958	2 292	0 015	19 673	283 920
1926-27, Essondale	144 566	3 287	0 672	41 831	9 957	10 023	118 948	30 244	5 158	7 791	22 775	395 414
1926-27, Saanich	136 181	3 963	0 854	34 738	41 799	2 784	89 839	30 355	2 730	0 265	48 521	391 902
1927-28, N. Westminster	123 558	2 224	0 449	35 579	9 241	7 523	82 392	7 936	3 695	0 657	19 278	292 532
1927-28, Essondale	147 800	3 834	0 853	43 477	8 080	11 847	126 202	23 745	5 026	5 555	24 596	401 015
1927-28, Saanich	137 775	2 832	0 735	35 419	34 133	3 898	92 073	25 295	2,303	1 300	46 062	381 825
1928-29, N. Westminster	124 602	2 220	0 336	35 190	10 055	10 435	86 069	7 095	2 409	0 011	17 231	295 683
1928-29, Essondale	157 372	3 786	0 870	42 081	12 750	8 865	144 672	24 620	4 440	5 351	18 813	423 620
1928-29, Saanich	145 573	2 711	0 832	41 570	46 364	8,171	101 634	24,273	3 133	0 600	50 162	425 623

TABLE C.—SHOWING THE TOTAL EXPENDITURE OF THE MENTAL HOSPITAL ANNUALLY SINCE ITS INCEPTION, ANALYSED UNDER ITS VARIOUS HEADINGS.

Year	Salaries	Provisions	Clothing	Fuel and Light	Furniture (estimated)	Medicines, etc	Miscellaneous	Total of Current Expenditure	Expenditure on Capital Account			
									New Furniture	Library	Surgical Instruments	Lands and Works
1872-87	\$91,889 70	\$59,567 24	\$6,482 84	\$9,317 03	\$5,331 52	\$2,307 04	\$6,131 55	\$181,042 26	\$2,600 00		\$ 32 00	\$917 26
1888	9,399 96	4,803 57	350 17	1,103 86	247 24	165 60	190 66	16,261 06				224 34
1889	9,390 62	4,214 19	513 73	922 00	293 69	147 76	175 80	15,657 79				625 56
1890	9,375 13	4,945 57	710 04	1,363 52	315 28	101 90	565 96	17,377 80	2,800 00			2,181 91
1891	10,590 28	6,568 27	459 58	2,449 09	406 84	226 19	1,056 66	21,757 03	900 00			1,001 86
1892	11,803 53	7,106 64	587 48	2,571 26	418 82	226 19	804 15	23,518 37				433 99
1893	12,790 28	7,172 53	729 38	3,629 00	452 55	362 08	1,369 16	23,904 95	650 00	\$ 19 00	10 75	718 49
1894	13,044 16	8,492 53	771 05	2,799 87	442 69	212 86	732 67	26,495 83	200 00			170 32
1895	14,802 47	9,963 54	1,611 96	3,324 54	419 01	502 90	963 47	31,587 89	1,800 00			1,126 74
1896	15,280 62	9,588 22	1,079 85	3,479 46	439 36	623 23	1,511 05	32,601 40	800 00	5 15	19 00	848 38
1897	16,529 76	10,991 05	1,579 08	3,610 63	557 97	728 73	1,928 14	36,224 76	1,200 00			5,320 30
1898	20,502 31	15,032 71	2,153 11	4,725 96	598 05	1,099 66	2,298 45	46,420 25	2,700 00		6 39	2,518 80
1899	23,658 15	16,511 05	1,882 13	7,690 35	566 86	617 27	1,991 64	54,917 45	1,300 00	8 00		1,806 10
1900	23,224 96	17,665 60	2,203 97	7,807 15	521 96	415 10	2,510 46	59,349 20	2,400 00	29 10	11 89	5,175 20
1901	30,735 95	21,096 19	2,727 11	4,998 67	875 30	288 40	1,823 28	53,406 08	1,840 53	25 10	14 65	5,561 42
1902	23,945 59	18,132 13	2,359 90	4,525 45	1,221 87	354 38	2,806 03	55,345 65	1,157 47	104 20	19 20	8,426 70
1903	27,362 37	19,222 50	2,850 19	4,906 22	1,077 73	634 16	3,300 40	59,353 57	1,723 70	111 48	9 00	4,593 88
1904	31,421 45	18,437 99	2,043 45	6,110 76	1,306 22	738 85	3,226 04	66,032 76	1,463 48	132 53	69 15	3,981 72
1905	31,421 45	18,437 99	2,043 45	6,110 76	1,306 22	693 49	3,326 04	66,596 69	1,711 84	91 47	69 15	5,564 03
1906	33,243 80	19,908 19	1,934 15	5,965 32	1,337 80	453 41	3,754 02	74,874 64	4,352 22	150 88	114 63	9,410 66
1907	37,394 21	20,326 99	2,439 64	8,314 36	1,265 63	655 66	4,498 15	90,269 49	5,646 86	127 50	91 01	10,775 00
1908	44,626 20	24,132 49	3,244 77	8,652 81	2,230 68	877 40	6,496 14	96,586 32	2,598 95	89 58	21 30	16,615 10
1909	49,665 85	28,142 65	4,298 01	8,856 11	1,465 79	441 59	5,715 42	103,900 44	4,043 58	139 76	9 50	12,465 08
1910	54,049 80	27,278 49	4,437 29	12,014 30	1,141 57	653 69	4,325 90	108,900 44	11,169 78	154 73	43 82	13,429 02
1911	62,453 00	37,229 56	6,020 57	12,079 62	722 10	1,200 92	7,076 73	126,782 06	4,477 21	157 46	301 15	17,701 00
1912	57,755 68	41,531 72	7,433 65	14,266 68	1,318 66	1,105 82	7,512 32	130,924 06	4,687 77	131 93	69 13	17,701 00
1913, New Westminster	56,359 76	29,767 27	5,191 33	13,909 72	2,608 03	1,767 42	10,060 18	119,663 71	4,687 77	212 79		14,904 63
1913, Essondale (9 mos)	35,993 98	17,271 35	2,117 73	9,669 99	208 05	395 80	3,422 23	71,079 84	46,680 54	4,417 50		10,117 16
1914, New Westminster	36,381 62	33,204 11	1,455 28	11,758 11	338 76	1,286 68	21,557 62	125,981 45	1,087 31			4,226 37
1914, Essondale	55,364 40	39,873 66	7,585 71	14,168 66	2,026 29	584 23	11,817 49	131,420 44	841 31			4,628 99
1915, Essondale	53,392 50	35,225 51	5,287 03	10,469 03	639 67	969 58	17,288 49	123,878 43	1,044 11			5,910 38
1915, New Westminster	57,217 21	33,174 90	3,902 49	10,469 03	308 05	316 87	13,074 46	123,021 70	1,395 09			8,623 88
1916, New Westminster	55,501 35	39,294 07	1,349 48	9,696 04		777 94	9,433 33	116,052 21	2,418 80			14,402 82
1916, Essondale	56,515 64	47,601 27	11,242 29	17,066 96	3,154 13	268 96	19,849 12	155,698 37	2,418 80			3,455 96
1917, New Westminster	55,393 19	38,674 92	5,639 40	9,795 36		1,275 54	13,346 27	124,124 68	1,538 13			10,515 80
1917, Essondale	59,862 30	37,294 25	13,555 03	16,759 02	3,415 42	578 58	14,766 91	166,231 51	1,611 63			

Above system discontinued in 1917 See new Table C1

TABLE C.I.—SHOWING GROSS EXPENDITURE IN PROFIT AND LOSS ACCOUNTS FOR YEAR ANALYSED UNDER ITS VARIOUS HEADINGS.

Year.	Salaries.	Office Sup- plies and Postage.	Travelling Expenses.	Fuel, Water, Light, and Power.	Repairs and Renovals.	Furniture and Fixtures, Bedding, etc.	Provisions.	Clothing, Boots, and Slippers.	Medical and Surgical Supplies.	Examination, Committee, and Trans- portation.	Incidentals and Unforeseen.	Total Gross.
1918, New Westminster	\$60,185 88	\$ 1,248 42	\$ 57 32	\$15,913 89	\$2,169 74	\$5,588 44	\$8,531 74	\$ 4,157 86	\$1,280 61	\$2,401 62	\$5,089 33	\$156,574 85
1918, Essondale.	72,853 08	2,258 13	363 14	25,126 54	4,403 10	6,351 27	89,496 23	12,974 41	1,252 08	44 75	6,975 64	222,097 37
1919-2, New Westmin- ster (15 months) ..	94,878 17	2,459 16	326 40	25,741 44	10,801 50	5,650 38	75,097 52	3,073 27	2,844 64	7,998 75	7,760 67	236,631 90
1919-20, Essondale (15 months) ..	117,738 67	2,879 47	920 30	35,512 26	23,860 37	9,380 10	133,395 18	20,766 40	1,601 14	1,107 67	10,469 43	337,630 99
1919-20, Saanich (373 days) ..	14,531 52	448 35	305 12	3,794 84	1,438 56	935 58	12,725 70	2,377 75	174 86	559 65	3,141 35	40,433 28
1920-21, N. Westminster	85,383 61	2,096 14	291 39	22,320 67	11,912 85	10,421 97	69,711 30	9,668 82	3,627 47	7,689 08	10,253 46	233,486 76
1920-21, Essondale ..	111,370 33	3,131 52	1,167 54	30,025 06	18,258 38	11,332 97	122,960 16	29,447 19	2,533 64	232 90	7,123 46	336,585 35
1920-21, Saanich ..	16,726 99	224 99	193 75	5,948 25	3,290 99	657 94	14,287 41	3,407 80	562 19	15 30	6,681 16	51,995 87
1921-22, N. Westminster	85,869 99	2,366 35	296 18	26,712 36	10,567 17	8,565 23	51,464 33	2,616 60	2,789 47	8,909 28	10,729 49	210,887 45
1921-22, Essondale ..	115,377 91	2,936 02	950 70	36,349 87	20,252 26	12,203 99	96,038 30	26,908 88	3,112 77	326 95	6,692 70	321,150 35
1921-22, Saanich ..	16,608 43	336 43	88 09	6,634 95	2,842 77	688 81	12,383 94	3,807 19	483 98	284 55	3,681 82	47,860 96
1922-23, N. Westminster	87,418 62	2,108 55	748 09	25,744 02	13,535 73	12,336 12	45,523 72	9,671 91	2,238 63	8,184 17	7,163 17	214,672 13
1922-23, Essondale ..	119,893 08	2,751 73	956 87	39,001 61	14,294 78	7,738 72	96,566 16	23,015 70	2,855 80	266 71	5,594 36	312,955 52
1922-23, Saanich ..	17,576 53	275 34	51 94	6,260 04	2,178 95	319 05	11,298 85	3,597 70	244 20	23 05	5,369 36	47,215 01
1923-24, N. Westminster	89,897 30	1,718 10	173 73	23,222 78	19,534 84	8,300 42	49,908 08	4,838 59	2,230 37	7,582 92	11,869 89	219,277 32
1923-24, Essondale ..	123,593 61	3,121 27	830 08	42,768 31	15,742 49	10,171 44	104,967 04	25,574 14	3,099 20	446 64	5,013 47	334,227 39
1923-24, Saanich ..	18,669 43	376 95	76 17	6,379 77	4,713 95	1,332 50	12,426 85	4,188 82	315 36	104 32	3,613 57	53,597 29
1924-25, N. Westminster	83,310 64	2,211 67	213 65	22,110 07	13,549 91	5,939 92	48,531 79	6,584 38	2,400 84	8,509 66	7,661 26	201,023 79
1924-25, Essondale ..	134,384 13	3,797 58	810 85	47,012 91	26,108 94	8,341 29	114,271 63	29,746 35	5,695 07	637 72	14,334 21	385,160 68
1924-25, Saanich ..	21,389 22	576 00	75 60	5,991 84	5,321 53	1,345 19	13,237 52	4,862 06	292 78	167 00	6,578 59	58,715 33
1925-26, N. Westminster	80,797 02	1,492 95	294 34	22,336 93	7,536 35	8,489 70	50,250 99	3,485 82	2,088 30	22 00	6,070 36	182,864 26
1925-26, Essondale ..	165,012 78	4,171 61	1,087 22	54,849 27	23,851 37	9,043 86	145,560 36	24,214 78	5,581 16	7,920 02	13,116 09	454,409 02
1925-26, Saanich ..	22,148 05	529 44	125 95	5,637 15	4,282 85	1,040 26	14,750 44	4,912 85	264 77	61 15	6,019 40	59,792 32
1925-27, N. Westminster	82,520 40	1,624 85	319 28	3,340 34	11,262 56	3,340 34	45,075 10	3,257 31	1,486 41	10 00	12,846 30	185,394 70
1925-27, Essondale ..	179,090 42	4,072 50	1,038 57	51,820 74	12,334 41	12,416 01	147,354 88	37,466 58	6,364 73	9,651 30	28,212 97	489,843 33
1925-27, Saanich ..	23,557 98	686 41	118 74	6,008 40	7,230 83	481 01	15,540 46	5,251 58	480 90	45 85	8,392 97	67,795 28
1927-28, N. Westminster	82,453 91	1,453 83	299 45	3,433 00	6,166 97	5,020 65	54,982 53	5,295 82	2,406 20	438 49	12,864 83	195,215 68
1927-28, Essondale ..	192,548 77	4,995 29	1,111 35	56,632 47	10,526 21	15,435 34	164,414 17	30,994 42	7,239 42	32,042 41	32,042 41	522,430 66
1927-28, Saanich ..	30,504 90	626 96	102 62	7,842 13	5,567 40	863 13	20,385 94	5,600 45	509 84	287 65	10,198 55	84,539 66
1928-29, N. Westminster	87,373 77	1,556 70	237 59	24,676 26	7,050 51	7,317 18	60,353 82	4,975 12	1,689 16	8 05	12,080 69	207,340 35
1928-29, Essondale ..	214,566 46	5,175 80	1,186 37	57,373 31	17,383 61	12,087 66	197,249 49	33,543 53	6,053 11	7,306 83	25,650 10	577,576 29
1928-29, Saanich ..	33,330 41	620 79	190 52	9,517 96	10,615 59	1,870 81	23,270 63	5,556 99	717 32	137 15	11,485 15	97,313 32

TABLE D—SUMMARY STATEMENT SHOWING THE GROSS AND NET PER CAPITA COST OF PATIENTS IN THE THREE INSTITUTIONS

Public Hospital for Insane, New Westminster—		
Total maintenance vouchers		\$215,476 68
Proportion headquarters vouchers		4,138 11
Maintenance and repairs (Public Works Department)		5,298 84
Inventories, March 31st, 1928		14,365 32
		<hr/>
		\$239,278 95
<i>Less</i> Essondale Clothing Account	\$13,564 90	
„ Saanich Clothing Account	1 410 00	
„ Colony Farm Account	1 721 40	
„ sundry sales	4 00	
„ inventories, March 31st, 1929	16,238 30	
	<hr/>	32,938 60
		<hr/>
Total, Public Hospital for Insane, New Westminster		\$206,340 35
Provincial Mental Hospital, Essondale—		
Total maintenance vouchers		\$570,384 69
Proportion headquarters vouchers		8 276 21
Maintenance and repairs (Public Works Department)		8 060 58
New Westminster Clothing Account		13 564 90
Colony Farm sundries		705 41
Inventories, March 31st, 1928		22 396 63
		<hr/>
		\$623,388 42
<i>Less</i> patient-labour, Colony Farm	\$18,000 00	
„ Supplies to Colony Farm	14 075 22	
„ sundry sales	334 93	
„ inventories, March 31st, 1929	31 421 98	
	<hr/>	63,812 13
		<hr/>
Total, Provincial Mental Hospital, Essondale		559,576 29
Mental Home, Saanich—		
Total maintenance vouchers		\$85 027 74
Proportion headquarters vouchers		2 069 05
New Westminster Clothing Account		1,410 00
Maintenance and repairs (Public Works Department)		8 938 89
Inventories, March 31st, 1928		3,129 22
		<hr/>
		\$100,574 90
<i>Less</i> inventories, March 31st, 1929		3,261 58
		<hr/>
Total, Mental Home Saanich		97 313 32
		<hr/>
Total operating expense for the three institutions		\$863,229 96
<i>Less</i> collections remitted to Treasury—		
Public Hospital for Insane, New Westminster	\$33 995 92	
Mental Hospital, Essondale	88 206 54	
Mental Home Saanich	10 036 86	
	<hr/>	132,239 32
		<hr/>
Total net expense for the three institutions		\$730 990 64
		<hr/> <hr/>

Total daily average population for the three institutions, 2,293 61, showing a net *per capita* cost of \$318 70 per year, or 87 31 cents per day

TABLE E—EXPENSE AND REVENUE STATEMENT OF THE NEW WESTMINSTER HOSPITAL FOR 12 MONTHS ENDED MARCH 31ST, 1929

Operating Expense Accounts

Operating expenditure by voucher—		
Salaries—		
Medical and clerical staff	\$8,847 96	
Other employees	80,919 82	
	<hr/>	\$89,767 78
Office supplies—		
Books and journals	\$130 35	
Postage and office supplies	613 14	
Telephone and telegrams	543 53	
	<hr/>	1,287 02
Travelling expenses		85 15
Fuel, water, light, and power—		
Fuel	\$16,321 54	
Water	3,173 84	
Light and power	4 565 13	
	<hr/>	24,060 51
Maintenance and repairs—		
Repairs and renewals	\$1 548 63	
Janitors' supplies	1,112 95	
	<hr/>	2,661 58
Furniture and fixtures—		
Bedding	\$2 188 41	
Furniture and fixtures	2,504 06	
Miscellaneous	1,345 52	
	<hr/>	6,037 99
Provisions—		
Groceries	\$21 243 69	
Meats	11 931 44	
Fish	3 947 45	
Farm produce	28 063 11	
	<hr/>	65,185 69
Uniforms and clothing—		
Clothing	\$13 274 88	
Boots and slippers	1 402 32	
	<hr/>	14 677 20
Medical and surgical supplies—		
Drugs	\$740 70	
Surgical instruments	35 47	
Miscellaneous	912 99	
	<hr/>	1 689 16
Examinations committals and transportation—		
Examinations	\$5 00	
Transportation	3 05	
	<hr/>	8 05
Incidentals and unforeseen—		
Amusements	\$339 68	
Gratuities	4 00	
Funerals	200 00	
Auto tires	127 42	
Auto repairs	75 65	
Gasoline and oils	849 09	
Tools and implements	278 76	
	<hr/>	<hr/>
<i>Carried forward</i>	\$1 874 60	\$205,460 13

TABLE E—EXPENSE AND REVENUE STATEMENT OF THE NEW WESTMINSTER HOSPITAL FOR 12 MONTHS ENDED MARCH 31ST, 1929—*Continued*

<i>Operating Expense Accounts—Continued</i>		
<i>Brought forward</i>	\$1,874 60	\$205 460 13
Operating expenditure by voucher— <i>Continued</i>		
Incidentals and unforeseen— <i>Continued</i>		
Freight and cartage	77 41	
Miscellaneous	8 064 54	
		10,016 55
Total expenditure for year by voucher		\$215 476 68
Maintenance and repairs (expended through Public Works Department)		5 298 84
Proportion headquarters vote		4,138 11
		\$224,913 63
<i>Summary of Profit and Loss Accounts</i>		
		Yearly <i>Per Capita</i> Cost
Salaries	\$87,373 77	\$124 602
Expenses—		
Office supplies	1,556 70	2 220
Travelling expenses	257 59	366
Fuel, water, light, and power	24 676 26	35 190
Maintenance and repairs	7,050 51	10 055
Furniture and fixtures	7,317 18	10 435
Provisions	60 353 32	86 069
Uniforms and clothing	4,975 12	7 095
Medical and surgical supplies	1,689 16	2 409
Examinations, committals, and transportation	8 05	011
Incidentals and unforeseen	12 082 69	17 231
		\$295 683
<i>Less patient labour (against market price for farm produce)</i>	1 000 00	1 424
		\$206 340 35
<i>Less Revenue Account (maintenance of patients)</i>	33,995 92	48 481
		\$172,344 43
Net cost of patients' maintenance to Government		\$245 778

Remarks

Total patients in residence, New Westminster, March 31st, 1929	727
Daily average population in New Westminster for year	701 22
Gross maintenance <i>per capita</i> cost, one year	\$295 68
Gross maintenance <i>per capita</i> cost, one day	810
Net maintenance <i>per capita</i> cost, one year	245 78
Net maintenance <i>per capita</i> cost, one day	673

TABLE F—EXPENSE AND REVENUE STATEMENT OF THE ESSONDALE HOSPITAL FOR 12 MONTHS
ENDED MARCH 31st, 1929

Operating Expense Accounts

Operating expenditure by voucher—		
Salaries—		
Medical and clerical staff	\$16,005 25	
Other employees	191,169 24	
		\$207,174 49
Office supplies—		
Books and journals	\$262 69	
Postage and office supplies	1,965 38	
Telegrams and telephones	2,408 38	
		4,636 45
Travelling expenses		841 48
Fuel water, light, and power—		
Fuel	\$47,738 19	
Water	7,181 29	
Light and power	10,458 93	
		65,378 41
Maintenance and repairs—		
Repairs and renewals	\$6 325 87	
Janitors' supplies	3,371 64	
		9,697 51
Furniture and fixtures—		
Bedding	\$5,410 69	
Furniture and fixtures	4 667 75	
Miscellaneous	3,121 51	
		13,199 95
Provisions—		
Groceries	\$70 829 68	
Meats	20 083 93	
Fish	6,097 60	
Colony Farm produce	117,129 60	
		214 140 81
Uniforms and clothing—		
Clothing	\$18 279 12	
Boots and slippers	3 768 47	
		22 047 57
Medical and surgical supplies—		
Drugs	\$2,797 56	
Surgical instruments	632 20	
X-ray and sundries	3,828 59	
		7 258 35
Examinations committals, and transportation—		
Examinations	\$1 195 00	
Committals	25 00	
Transportation	6 086 85	
		7,306 85
Incidentals and unforeseen—		
Amusements	\$1,155 34	
Gratuities	226 10	
Funerals	1 625 00	
Auto tires	270 60	
Auto repairs	1,261 69	
Gasoline and oils	908 22	
		\$5,446 95
<i>Carried forward</i>		\$551 681 87

TABLE F—EXPENSE AND REVENUE STATEMENT OF THE ESSONDALE HOSPITAL FOR 12 MONTHS
ENDED MARCH 31ST, 1929—Continued

<i>Operating Expense Accounts—Continued</i>	
<i>Brought forward</i>	\$5,446 95 \$551,681 87
Operating expenditure by voucher— <i>Continued</i>	
Incidentals and unforeseen— <i>Continued</i>	
Tools and implements	752 07
Freight and cartage	862 41
Miscellaneous	11,641 39
	18,702 82
Total expenditure for year by voucher	\$570,384 69
Maintenance and repairs (expended through Public Works Department)	8,060 58
Proportion headquarters vouchers	8 276 21
Public Hospital for Insane Account	13 564 90
	\$600 286 38
<i>Summary of Profit and Loss Accounts</i>	
	Yearly <i>Per Capita</i> Cost
Salaries	\$211,566 46 \$157 372
Office supplies	5,175 80 3 786
Travelling expenses	1,186 37 870
Fuel, water, light, and power	57,373 31 42 081
Maintenance and repairs	17,383 61 12 750
Furniture and fixtures	12 087 66 8 865
Provisions	197,249 49 144 672
Clothing	33 543 53 24 620
Medical and surgical supplies	6 073 11 4 440
Examinations, committals, and transportation	7 306 85 5 351
Incidentals and unforeseen	25 650 10 18 813
	\$577 776 29 \$423 620
<i>Less</i> patient labour (against market price for farm produce)	18 000 00 13 202
	\$559,776 29 \$410 418
<i>Less</i> Revenue Account (maintenance of patients)	88 206 54 64 694
	\$471,369 75 \$345 724
<i>Remarks</i>	
Total patients in residence, Essondale March 31st, 1929	1 391
Daily average population in Essondale for year	1,363 43
Gross maintenance <i>per capita</i> cost, one year	\$423 62
Gross maintenance <i>per capita</i> cost, one day	1 16
Net maintenance <i>per capita</i> cost, one year	345 72
Net maintenance <i>per capita</i> cost one day	947
<i>Capital Expenditure</i>	
Preparatory work (new unit)	\$10 478 23
Female Chronic (steam lines and additions to power plant)	148 550 57
Farm Cottage addition	5 082 98
Nurses' Home	4 249 50
Apartment Block, preliminary work	1 137 02
Preliminary work and contingencies, various buildings	12,105 80

TABLE G — EXPENSE AND REVENUE STATEMENT OF THE SAANICH HOSPITAL FOR 12 MONTHS
ENDED MARCH 31ST, 1929

Operating Expense Accounts

Operating expenditure by voucher—

Salaries—

Supervisor	\$2,100 00	
Other employees	29 382 42	
		\$31 482 42

Office supplies—

Books and journals	\$25 20	
Postage and office supplies	196 23	
Telegrams and telephone	264 52	
		485 95

Travelling expenses

104 30

Fuel, water, light and power—

Fuel	\$6 858 86	
Water	1,383 00	
Light and power	1 246 10	
		9 517 96

Maintenance and repairs—

Repairs and renewals	\$207 22	
Janitors' supplies	1 351 65	
		1 558 87

Furniture and fixtures—

Bedding	\$152 78	
Furniture and fixtures	470 77	
Miscellaneous	757 18	
		1 380 73

Provisions—

Groceries	\$14 911 54	
Meats	6 941 47	
Fish	1 693 38	
		23 546 39

Clothing—

Clothing	\$3 918 30	
Boots and slippers	942 20	
		4 860 50

Medical and surgical supplies—

Drugs	\$244 92	
Surgical instruments	18 40	
Sundries	454 00	
		717 32

Examinations committals and transportation

137 15

Incidentals and unforeseen—

Amusements	\$984 75	
Funerals	393 00	
Auto tires	6 05	
Auto repairs	595 00	
Gasoline and oils	705 48	
Tools and implements	344 36	

Carried forward

\$2 828 44 \$73 791 59

TABLE G—EXPENSE AND REVENUE STATEMENT OF THE SAANICH HOSPITAL FOR 12 MONTHS
ENDED MARCH 31ST, 1929—Continued

<i>Operating Expense Accounts—Continued</i>		
<i>Brought forward</i>	\$2,828 44	\$73,791 59
Operating expenditure by voucher—Continued		
Incidentals and unforeseen—Continued		
Freight and cartage	288 74	
Miscellaneous	8,118 97	
		11,236 15
Total expenditure for year by voucher		\$85 027 74
Proportion headquarters vouchers		2 069 05
New Westminster Clothing Account		1,410 00
Maintenance and repairs (expended through Public Works Department)		8,938 89
		\$97,445 68
 <i>Summary of Profit and Loss Accounts</i>		
		Yearly <i>Per Capita</i> Cost
Salaries	\$33,330 41	\$145 573
Expenses—		
Office supplies	620 79	2 711
Travelling expenses	190 52	832
Fuel, water light, and power	9 517 96	41 570
Maintenance and repairs	10,615 59	46 364
Furniture and fixtures	1 870 81	8 171
Provisions	23 270 63	101 634
Uniforms and clothing	5 556 99	24 273
Medical and surgical supplies	717 32	3 133
Examinations, committals, and transportation	137 15	600
Incidentals and unforeseen	11 485 15	50 162
	\$97 313 32	\$425 023
<i>Less Revenue Account (maintenance of patients)</i>	10 036 86	43 836
Net cost to Government for maintenance of patients	\$87,276 46	\$381 187

Remarks

Total patients in residence, March 31st, 1929	229
Daily average population for year	228 96
Gross maintenance <i>per capita</i> cost, one year	\$425 02
Gross maintenance <i>per capita</i> cost one day	1 164
Net maintenance <i>per capita</i> cost, one year	381 19
Net maintenance <i>per capita</i> cost, one day	1 044

REVENUE OF MENTAL HOSPITALS SINCE INCEPTION.

1873	\$ 1,440 99	1900	\$6,893 33	1920-21, Essondale ..	\$46,418 81
1874	680 00	1901	12,800 76	1920-21, Saanich	3,580 31
1875	1,342 60	1902	10,926 23	1921-22, New West...	38,409 52
1876	730 31	1903	13,639 64	1921-22, Essondale ..	43,078 91
1877	799 91	1904	15,004 22	1921-22, Saanich	4,263 65
1878	479 42	1905	16,613 18	1922-23, New West...	34,148 55
1879	867 38	1906	19,058 42	1922-23, Essondale ..	48,448 69
1880	1,433 04	1907	20,753 35	1922-23, Saanich	5,698 29
1881	614 99	1908	25,807 83	1923-24, New West...	33,407 79
1882	505 18	1909	25,845 65	1923-24, Essondale ..	43,371 30
1883	298 24	1910	26,137 38	1923-24, Saanich	5,616 53
1884	98 35	1911	30,100 20	1924-25, New West...	37,721 99
1885	1912	35,151 97	1924-25, Essondale ..	49,929 43
1886	50 00	1913	40,756 56	1924-25, Saanich	6,125 15
1887	720 59	1914	42,731 83	1925-26, New West...	35,282 10
1888	750 00	1915, New West.	18,046 21	1925-26, Essondale ..	63,151 50
1889	220 00	1915, Essondale	16,329 72	1925-26, Saanich	7,385 93
1890	599 24	1916, New West.	18,135 91	1926-27, New West...	27,645 65
1891	761 15	1916, Essondale	21,889 74	1926-27, Essondale ..	63,943 08
1892	2,418 43	1917, New West.	21,435 93	1926-27, Saanich	7,085 17
1893	1,585 40	1917, Essondale	25,350 09	1927-28, New West...	35,239 21
1894	2,709 53	1918, New West.	35,169 86	1927-28, Essondale ..	75,720 87
1895	4,409 23	1918, Essondale	32,100 14	1927-28, Saanich	11,594 08
1896	3,741 71	1919-20, New West...	45,921 06	1928-29, New West...	33,995 92
1897	3,816 80	1919-20, Essondale ..	53,740 40	1928-29, Essondale ..	88,206 54
1898	4,003 79	1919-20, Saanich	3,215 39	1928-29, Saanich	10,036 86
1899	4,769 04	1920-21, New West...	38,323 55		

TAILOR'S REPORT, 1928-29.

MENTAL HOSPITAL, ESSONDALE.

Uniforms—

153 uniform suits at \$40	\$6,120.00
128 uniform pants at \$10	1,280.00
	\$7,400.00

Patients' clothing to measure—

291 patients' suits at \$19	\$5,529.00
3 patients' special suits at \$22	66.00
21 patients' pants at \$6.50	136.50
1 patient's vest at \$3	3.00
	5,734.50

Stock—

10 stock suits at \$19	\$190.00
16 canvas rugs at \$5	80.00
26 camisoles at \$1.25	32.50
46 bed-ticks at \$1.25	57.50
6 restraint-sheets at \$1.50	9.00
8 lace coats at \$1	8.00
2 fracture bed-sheets at \$1.25	2.50
24 chair-covers at 35 cents	8.40
24 pan-covers at 25 cents	6.00
	393.90

Carried forward \$13,528.40

MENTAL HOSPITAL, ESSONDALE—Continued.

	<i>Brought forward</i>	\$13,528 40
Repairs—		
8,080 coats repaired and pressed at 25 cents	\$2,020 00	
8,861 pants repaired and pressed at 20 cents	1,772 20	
1,192 vests repaired and pressed at 15 cents	178 80	
60 canvas rugs at \$1	60 00	
	<hr/>	4,031 00
		<hr/> <hr/>
		\$17,559 40
		<hr/> <hr/>
Uniforms—	PUBLIC HOSPITAL FOR INSANE, NEW WESTMINSTER	
38 uniform suits at \$40	\$1,520 00	
30 uniform pants at \$10	300 00	
Stock—	<hr/>	\$1,820 00
42 suits at \$19	\$798 00	
2 suits, special, at \$22	44 00	
43 pants at \$6 50	279 50	
20 canvas rugs at \$5	100 00	
6 working overalls at \$4	24 00	
2 cooks' coats at \$2	4 00	
28 bed ticks at 35 cents	9 80	
31 pillow-ticks at 10 cents	3 10	
Repairs—	<hr/>	1,262 40
722 coats repaired and pressed at 25 cents	\$180 50	
830 pants repaired and pressed at 20 cents	166 00	
100 vests repaired and pressed at 15 cents	24 00	
231 canvas rugs at \$1	231 00	
	<hr/>	601 50
		<hr/> <hr/>
		\$3,683 90
		<hr/> <hr/>
Uniforms—	MENTAL HOME, SAANICH	
29 uniform suits at \$40	\$1 160 00	
25 uniform pants at \$10	250 00	
	<hr/>	\$1,410 00
		<hr/> <hr/>
		<hr/> <hr/>
Production—	STATEMENT OF TAILOR-SHOP, 1928-29	
For Public Hospital for Insane, New Westminster	\$3,683 90	
For Mental Hospital, Essondale	17,559 40	
For Mental Home, Saanich	1,410 00	
	<hr/>	\$22,653 30
Material on hand, March 31st, 1929	3 074 65	
Costs—	<hr/>	\$25,727 95
Material on hand, March 31st, 1928	\$3,271 72	
Salaries—		
Tailors	\$6 600 00	
Seamstresses	2,628 71	
	<hr/>	9,228 71
Electric power	\$50 00	
Electric light	30 00	
	<hr/>	80 00
Material purchased, 1928-29	9,050 38	
	<hr/>	21,630 81
		<hr/> <hr/>
	Profit on operations	\$4 097 14
		<hr/> <hr/>

SHOEMAKER'S REPORT, 1928-29.

PUBLIC HOSPITAL FOR INSANE, NEW WESTMINSTER			
New work—			
55 pairs boots		\$263 50	
17 pairs slippers		70 00	
		<hr/>	\$333 50
Repair-work—			
407 pairs boots			689 85
			<hr/>
			\$1 023 35
			<hr/> <hr/>
MENTAL HOSPITAL, ESSONDALE			
New work—			
4 pairs boots			\$36 50
Repair work—			
664 pairs boots		\$1,274 05	
320 pairs slippers		267 85	
		<hr/>	1,541 90
			<hr/>
			\$1,578 40
			<hr/> <hr/>
STATEMENT OF SHOEMAKER SHOP, 1928-29			
Production—			
For Public Hospital for Insane		\$1,023 35	
For Mental Hospital, Essondale		1,578 40	
		<hr/>	
		\$2,601 75	
Material on hand, March 31st, 1929		151 40	
		<hr/>	\$2,753 15
Costs—			
Salary of Shoemaker		\$1,440 00	
Material purchased		826 72	
Light and power		35 00	
Material on hand, March 31st, 1928		207 03	
		<hr/>	2,508 75
			<hr/>
Profit on operations			\$254 40
			<hr/> <hr/>

PRODUCTION TABLES

ARTICLES MADE BY FEMALE PATIENTS, YEAR ENDED MARCH 31ST, 1929

For Public Hospital for Insane, New Westminster

Aprons	362	Towels, hand	161
Dresses	383	Towels, tea	114
Chemises	525	Trav cloths	144
Handkerchiefs	278	Pillow slips	633
Neckties	135	Curtains pairs	108
Petticoats	337	Bureau covers	175
Table cloths	402	Caps, uniform	63
Towels, roller	327	Cuffs pairs	94

For Mental Hospital, Essondale

Sheets	1,051	Towels, roller	412
Pillow slips	601	Table cloths	56

MENDING DONE BY FEMALE PATIENTS FOR ESSONDALE, 1928-29

Blankets, wool	253	Table cloths	56
Spreads	219	Aprons	153
Sheets	2,085	Sweaters	56
Bed ticks	9	White coats	87
Towels	377	Overalls	86
Socks	15 547	Combinations	152
Shirts	5 227	Pillow-slips	117
Drawers, pairs	2 784		

MENDING DONE BY FEMALE PATIENTS FOR NEW WESTMINSTER, 1928-29

Aprons	138	Towels	150
Blankets wool	458	Bed ticks	280
Blouses	158	Undershirts	325
Chemises	486	Top shirts	275
Dresses	2 021	Undervests	1 639
Hose, pairs	6 182	Drawers, pairs	2 021
Skirts	1 296	Socks pairs	940
Spreads	950	White coats	75
Pillow slips	350	Overalls	86
Sheets	1 123	Sweaters	56
Table cloths	115		

WORK DONE BY PATIENTS AT ESSONDALE, 1928-29

	Days		Days
General	2 985	Drains and ditches	377
Lawns	2 343	Recreation grounds	389
Coke and coal	1,656	Cement mixer and blocks	344
Excavating	4 315	Roads	2,179
Grade	1 809	Garages	96
Gravel and sand	534	Cordwood	282
Rock	764	Clearing	130
Prune orchard	237	Rock crusher	470
Choices	1,208	Colony Farm	249
Teaming	277	Water mains	40
Stable	773		

WORK DONE BY PATIENTS AT NEW WESTMINSTER, 1928-29

	Days		Days
Auto truck	349	Teamster	316
Baker	877	Lawns	2,725
Carpenter ^d	1,566	Porter	729
Chicken run	732	Piggery	2,194
Dining room	793	Scullery	1 406
Engineer	1 096	Painter ^d	1 289
Farmer	3 431	Plasterer and mason	628
Gardener	1,532	Plumber	314
Kitchen	3 654	Tailor	628
Laundry	1,889	Ward work	235
Cemetery	628	Store	282
Shoemaker	546		

WORK DONE BY TRAMS AT ESSONDALE, 1928-29

	Days		Days
General	339	Grade	52
Coal and coke	180	Building material	54
Sand and gravel	73	Cordwood	51
Rock	77	Roads	68
Excavation	168		

PRODUCTION TABLES

T 51

SUPPLIES PRODUCED AT NEW WESTMINSTER, 1928-29

Fruit

Apples, lb	32,110	Red currants, lb	820
Cherries, lb	685	Black currants, lb	65
Strawberries, lb	510	Rhubarb, lb	7,290
Raspberries, lb	1,043	Plums, lb	3,220
Gooseberries, lb	285	Pears, lb	1,725

Vegetables.

Green onions, lb	2,490	Parsnips, lb	800
Cooking onions, lb	8,450	Radishes, bunches	485
Ripe tomatoes, lb	1 375	Spinach, lb	2,250
Early potatoes, lb	7,100	Cauliflower, heads	250
Green corn, doz	221	Vegetable marrow, lb	940
Carrots, lb	9,670	Pumpkins, lb	600
Beets, lb	4,370	Kale, lb	1,200
Cabbage, lb	4,310	Parsley, bunches	42
Green beans, lb	950	Mint, bunches	40
Lettuce, heads	6,600	Asparagus, bunches	30
Cucumbers, lb	1,485	Green peas, lb	930
Green tomatoes, lb	120		

SUPPLIES PRODUCED AT COLQUITZ, 1928-29.

Fruit.

Apples, lb	3 428	Currants, red, lb	1,560
Grapes, lb	370	Currants, black, lb	70
Apples crab, lb	175	Raspberries, lb	875
Pears, lb	1,280	Loganberries, lb	45
Plums, lb	1,580		

Vegetables

Beans, broad, lb	45	Lettuce, heads	1,705
Beans, string, lb	625	Pumpkins, lb	815
Beans, butter, lb	60	Onions, green, bunches	620
Beans, scarlet runners, lb	135	Onions, dried, lb	5,669
Beets, lb	6,090	Parsnips, lb	6,770
Cucumbers, lb	482	Peas, green, lb	570
Cauliflowers, heads	757	Potatoes	72,980
Brussels sprouts, lb	165	Rhubarb, lb	2,710
Cabbage, lb	4,680	Spinach, lb	1,530
Carrots, red, lb	17,600	Tomatoes, lb	5,245
Carrots, white, lb	2,000	Turnips, white, lb	137
Corn, ears	5,440	Celery, heads	740
Leeks, lb	934		

Farm Produce

Veal, lb	675	Milk, lb	104,713
Pork, lb	3,405	Hay, clover, lb	7,000
Rabbits, lb	549	Hay, wheat, lb	6,000
Chickens, lb	62	Hay, oats, lb	8,000
Eggs, doz	617½		

PART III.—COLONY FARM.

FARM SUPERINTENDENT'S REPORT.

ESSONDALE, B.C., April 1st, 1929.

A. L. Crease, Esq., M.D., C.M.,

Medical Superintendent, Mental Hospital, Essondale, B.C.

SIR,—I beg to submit herewith report and financial statement on the operations of Colony Farm for the year ended March 31st, 1929.

As the detailed stock inventories are on file in your office and with the department, and as the total number of animals and valuation in each class are shown in the balance-sheet, these voluminous lists have not been included in the report.

The farm was able to fill the increased requirements of both institutions in dairy, pork products, and in canned and fresh fruits and vegetables. In every case these were supplied at market prices and, with the exception of poultry, at no loss on cost of production.

The usual high standard expected of our fields, equipment, buildings, and stock has been well maintained during the year. The success attending the year's operation is due to the excellent interest and co-operation shown by the entire staff.

Respectfully submitted.

P. H. MOORE,

Farm Superintendent.

BURSAR'S REPORT ON COLONY FARM.

ESSONDALE, B.C., April 1st, 1929.

A. L. Crease, Esq., M.D., C.M.,

General Medical Superintendent of Mental Hospitals, Essondale, B.C.

SIR,—I have the honour to submit herewith balance-sheet and profit and loss statement, together with costs sheet, for the Colony Farm, covering the fiscal year ended March 31st, 1929.

By reference to profit and loss statement you will note that the year's activities showed a profit of \$18,240.16 after writing off loss and death of stock, against which there is a patient-labour charge of some \$19,000 for the year.

Our dairy production of milk was 1,566,759.3 lb., at a cost of \$46,709.38, or an average cost of production, pasteurization, etc., of 29.8 cents per gallon, another reduction this year of 2.23 cents per gallon on the last year's figures.

Inventories are about the same in the total; the biggest reduction is shown in the Hog Department.

We finished the year with feed and nursery inventories showing an increase over last year. All the crops showed a substantial gain, with the exception of carrots; the yield per acre and cost per ton compared favourably with other years.

The farm supplied the Essondale Institution with farm and other products amounting to \$118,539.01; Public Hospital for the Insane at New Westminster with \$28,238.11. Nursery stock supplied to Government institutions, schools, etc., throughout the Province amounted to \$4,002.60; and remitted to the Treasury from the sale of live stock and other products \$151,292.25.

For detailed information with reference to cost and production please refer to the accompanying statements.

All of which is respectfully submitted.

GOWAN MACGOWAN,

Bursar.

BALANCE SHEET, COLONY FARM

APRIL 1st, 1928, to MARCH 31st, 1929

	<i>Assets</i>	
Land Account—		
Colony Farm		\$113,389 86
Wilson Annex		105,295 80
		<u>218,685 66</u>
Buildings and plant		211,586 19
Water system		4,411 25
Bridge		7,571 89
Fencing, pavement, etc		68,818 67
Equipment		33,331 37
Live stock—		
Bulls, as per inventory, 7 head		\$3,650 00
Cows, as per inventory, 160 head		45,150 00
Yearlings, as per inventory, 37 head		6,885 40
Calves, as per inventory, 44 head		2 679 74
Work-horses, as per inventory, 40 head		7,875 00
Sheep, as per inventory, 70 head		1,987 00
Hogs, as per inventory, 466 head, and stores on hand		10,952 75
Poultry, as per inventory, 816 head, and stores on hand		1,474 85
		<u>80,654 74</u>
Sundry inventories—		
Feed		\$15,088 48
Gasoline		16 38
Cannery		4,988 65
Cream		19 80
Nursery		47,503 02
		<u>67,616 33</u>
Accounts receivable		30 47
Growing Crops Apportionment Account		5,050 50
		<u>\$697,757 07</u>
	<i>Liabilities</i>	
Surplus Account		\$677 129 59
Less Patient labour Account, 1928-29		19,000 00
		<u>\$658,129 59</u>
Profit to March 31st, 1928		\$21,387 32
Profit for year 1928-29		18,240 16
		<u>39,627 48</u>
		<u><u>\$697,757 07</u></u>

PROFIT AND LOSS ACCOUNT.

YEAR ENDED MARCH 31ST, 1929.

Department.	Debits	Credits	Loss (Deaths and destroyed)	Loss.	Gain	Acceage	Costs
Dairy and herds	\$47,973 72	\$67,686 64	\$875 00	\$631 58	\$19,712 92		
Cows	5,275 00	3,768 42	100 32	138 65			
Calves	2,212 27	1,973 30	305 50	3,905 79			
Yearlings	5,361 80	1,450 51			347 00		
Bulls	500 00	847 00					
Work horses, sales and deaths	635 00	75 00	55 00	525 00			
Work horses, Labour Account	19,545 24	22,520 00			2,974 76		
Tractor	1,335 64	1,641 00			305 36		
Sheep	3,760 77	3,914 06			153 29		
Hogs	32,592 30	37,473 47		862 34	4,881 17		
Poultry	5,529 91	4,667 57					
Nuisety	53,439 56	64,086 00			10,646 44		
Cannery	17,831 98	26,390 45			8,558 47		
Maintenance	34,255 88			34,255 88			
Pasturage	403 70	1,650 00			1,206 30		
Shrinkage and rot	180 00			180 00			
Exhibition expenses	767 69			767 69			
Crops—							
Hay	1,842 35	2,600 00			757 65	83 00	2 41 tons, cost per ton, \$9 21
Ensilage	3,354 25	4,317 50			963 25	101 00	8 55 " " "
Onions	1,310 00	871 65			740 65	1 50	15 20 " " "
Potatoes	6,558 23	14,169 45			7,611 22	53 00	14 20 " " "
Oats	1,391 07	2,758 65			1,367 58	46 00	2,507 lb; " "
Carrots	3 88	325 00		13 00		2 50	26 00 tons, " "
Roots	1,430 15	2,060 00			629 85	23 75	17 35 " " "
	\$246,665 51	\$264,905 67	\$1,385 82	\$41,279 93	\$60,855 91		
				41,279 93			
				\$19,575 98			
							Profit on operations, (exclusive of deaths of stock and patient labour)
							1,335 82
							Loss from deaths and slaughter of stock
							\$18,240 16
							Profit for year

Patient labour for year, \$19,000



A DAY-ROOM. ACUTE BUILDING, ESSONDALE.

DAIRY AND HERDS DEPARTMENT
 PROFIT AND LOSS ACCOUNT, MARCH 31st, 1929

	<i>Expenses</i>	
Total expense for year		\$46,955 90
March 31st, 1928, inventory		12 82
		\$46,968 72
	<i>Production</i>	
Dairy produce supplies		\$66,415 32
Ice supplies		246 52
March 31st, 1929, inventory		19 80
		66,681 64
Profit for year		\$19,712 92

	PRODUCTION AND COSTS ACCOUNT, MARCH 31st, 1929	Production Lb Milk
Dairy—		
Salaries and upkeep	\$2,073 94	
Fuel	702 50	
	\$2,776 44	
Test cows—		
Salaries and upkeep	\$3,656 28	
Feed	11,003 42	
Board of employees	1,346 00	
	16,005 70	
General herd—		
Salaries and upkeep	\$9,079 04	
Feed	16,115 22	
Horse labour	396 50	
Board	2,683 00	
Pasturage	905 00	
	29,178 76	
		\$47 960 90
Less allowance for manure		1,005 00
		\$46 955 90
March 31st, 1928, inventory		12 82
Total cost		\$46,968 72 1,566,759 3

	MILK PRODUCTION FOR YEAR 1928-29	Production Lb	Cost
1928			
April		129,685 5	\$2,970 31
May		138,867 3	3 790 53
June		127 908 6	2 769 28
July		133,307 6	3,460 60
August		130 132 6	2,896 71
September		126 116 4	3,893 11
October		134 178 1	4,406 38
November		124,947 3	4,586 48
December		132,998 1	4,726 26
1929			
January		131,332 1	4,567 66
February		118,384 8	4,358 07
March		138,900 9	4,283 99
		1,566,759 3	\$46,709 38

Average cost of production, pasteurizing, etc., 29 8 cents per gallon

BULL DEPARTMENT

PROFIT AND LOSS ACCOUNT, MARCH 31st, 1929

Name of Animal	Asset Value	Selling price	Remarks
1928 Col Posch Champion 5th Increase in inventory	\$500 00	\$350 00 497 00	Sold
	\$500 00	\$847 00 500 00	
Profit		\$347 00	

MATURE COW DEPARTMENT

PROFIT AND LOSS ACCOUNT, MARCH 31st, 1929

Name of Animal	Asset Value	Selling price	Remarks
1928			
April 30 Colony Canary McKinley	\$100 00	\$103 01	Beefed
Colony Aaggie Koba	100 00		
Madam Bessie Posch	100 00	114 75	Beefed
Colony Ena DeKol Abbeckerk	150 00	66 30	Beefed
Colony Morag Canary	75 00	38 25	Beefed
Colony Grace Canary	200 00		Died
Laundry fat, etc		23 95	
May 31 Colony Minnie Segis	75 00	89 76	Beefed
Colony Schuilling Abbeckerk	150 00	93 07	Beefed
Colony Georgie Abbeckerk	250 00	99 07	Beefed
Laundry fat, etc		31 25	
Hides sold		60 00	
Aug 31 Colony Beulah McKinley	200 00	91 03	Beefed
Laundry fat, etc		18 30	
Sept 30 Colony Faforit Newman	300 00	96 38	Beefed
Colony Beets Newman	100 00	96 90	Beefed
Colony Ianthe McKinley	200 00	96 13	Beefed
Beaverland Julia Pauline	75 00		Died
Colony Julia Abbeckerk	150 00		Died
Hides sold		35 00	
Oct 31 Colony Daisy McKinley Abbeckerk	300 00	250 00	Sold
Colony Aaggie Posch	250 00	100 98	Beefed
Colony Canary Aaggie	200 00	98 04	Beefed
Colony Faforit Ormsby	150 00	112 20	Beefed
Colony Daisy Abbeckerk	250 00	92 82	Beefed
Colony Grace Countess	100 00		Died
Hides sold		29 00	
Nov 30 Colony Deirdie Koba	500 00	115 00	Beefed
Dec 31 Colony Marie Koba	200 00	91 03	Beefed
Laundry fat, etc		55 00	
1929			
Jan 31 Colony Coia McKinley	100 00	104 80	Beefed
Colony Ena DeKol Paulne	250 00		Destroyed
Feb 28 Colony Cyclone Abbeckerk	200 00	200 00	Sold
Colony Contest Canary	350 00	79 56	Beefed
Laundry fat, etc		12 70	
Colony Dusky Lass Koba	200 00	115 14	Beefed
Mar 31 Laundry fat		14 00	
Sale of hides		20 00	
Gain on inventory		1 125 00	
	\$5 275 00	\$3 768 42	
	3 768 42		
Loss	\$1,506 58		

MATURE COW DEPARTMENT—Continued.

PROFIT AND LOSS ACCOUNT, MARCH 31ST, 1929—Continued.

Abstract of Loss.

Loss by deaths and destroyed	\$875.00
Loss by cows butchered	1,706.58
Loss on sales	50.00
	<hr/>
	\$2,631.58
Less gain on inventory	1,125.00
	<hr/>
Loss	<u>\$1,506.58</u>

YEARLING DEPARTMENT.

PROFIT AND LOSS ACCOUNT, MARCH 31ST, 1929.

Name of Animal.	Asset Value.	Selling-price.	Remarks.
1928.			
April 30. Colony Koba McKinley 52nd.....	\$198.00	\$125.00	Sold.
Dec. 31. Colony Sir Bessie Hello.....	204.00	175.00	Sold.
Colony Wimple Sir Bessie.....	204.00	260.00	Sold.
1929.			
Jan. 31. Colony Georgie Pauline Koba.....	305.50	Died.
Feb. 28. Colony Tensen Canary.....	309.00	200.00	Sold.
Colony Ianthe Johanna Canary.....	309.00	200.00	Sold.
Mar. 31. Colony FAVORIT Canary.....	337.50	70.51	Vealed.
Colony Gracie Zarilda.....	204.00	120.00	Sold.
Loss on transfer to mature classes.....	3,290.80	
	<hr/>		
	\$5,361.80	\$1,150.51	
	1,150.51		
Loss	<hr/>		
	\$4,211.29		

Abstract of Loss.

Loss on sales	\$348.00
Loss by deaths	305.50
Loss by butchered	266.99
Loss by transfers	3,290.80
	<hr/>
Loss	<u>\$4,211.29</u>

CALVES DEPARTMENT.

PROFIT AND LOSS ACCOUNT, MARCH 31ST, 1929.

Name of Animal		Asset Value	Selling price	Remarks.
1928				
April 30	Colony Faforit Sir Bessie	\$21 90	\$75 00	Sold
	Colony 690A	17 50	11 20	Vealed
	Colony 692B	9 00	11 60	Vealed
	Colony 693A	10 30	11 40	Vealed
	Colony 693B	10 30	11 00	Vealed
May 31	Colony 693c	12 50	14 40	Vealed
	Hides sold		22 46	
June 30	Colony Ianthe Posch Romeo	30 00	12 73	Vealed
	Colony Paul Segis DeKol	20 00	11 78	Vealed
	Colony Posch Sir Bessie	145 00	37 85	Vealed
July 31	Colony Mercena Sir Bessie	25 00	12 07	Vealed
	Colony Posch Segis DeKol	20 00	14 79	Vealed
	Colony 702B	20 00	9 86	Vealed
	Colony 702c	20 00	9 69	Vealed
	Colony Koba McKinley 60	15 00	11 56	Vealed
	Colony Koba McKinley 61	20 00	10 20	Vealed
	Colony Contest Segis DeKol	15 00	9 86	Vealed
	Colony 705B	15 00	9 35	Vealed
	Colony Dellah Sir Bessie	15 00	9 01	Vealed
	Colony Beets Canary	15 00	10 20	Vealed
Aug 31	Colony 707B	30 00	13 09	Vealed
	Colony 710A	16 00	11 90	Vealed
Sept 30	Colony 711A	19 80	10 37	Vealed
	Colony 713A	18 00	12 07	Vealed
	Colony 715A	18 00	9 69	Vealed
	Colony 715B	18 00	8 50	Vealed
	Colony 707c	45 00	23 29	Vealed
	Colony Vale Champion	153 00	153 00	Exchanged
	Hides sold		25 00	
Oct 31	Colony 716A	18 00	10 44	Vealed
	Colony 721A	10 80	10 44	Vealed
	Colony 723A	6 00		Died
	Colony DeKol Sir Bessie	126 00	135 00	Sold
	Hides sold		6 00	
Nov 30	Colony 729A	12 75	11 34	Vealed
	Colony 723B	12 75	9 54	Vealed
	Colony 723c	8 50	12 24	Vealed
Dec 31	Colony 730A	17 00	11 22	Vealed
	Colony Jewel Sir Bessie	114 75	135 00	Sold
	Hides sold		36 58	
1929				
Jan —	Colony 736A	17 15	9 69	Vealed
	Colony 736B	17 15	11 21	Vealed
	Colony 734A	17 15	9 70	Vealed
	Colony 734B	17 15	10 64	Vealed
	Colony 736c	8 65	10 26	Vealed
	Colony 738A	17 15	9 88	Vealed
	Colony 738B	17 15	9 88	Vealed
	Colony 739A	12 75	10 64	Vealed
	Colony Ella Colantha	94 32		Died
Feb 28	Colony Vale Koba Romeo	25 50	13 80	Vealed
	Colony Koba McKinley 66th	17 00	12 80	Vealed
	Colony 740A	17 00	13 80	Vealed
	Colony 740B	17 00	12 40	Vealed
	Colony 743A	12 75	11 80	Vealed
	Colony Koba McKinley 59th	191 25	157 50	Sold
Mar 31	Colony Netherland Sir Bessie	51 75	19 38	Vealed
	Colony Korndyke Sir Bessie	17 25	11 40	Vealed
	Colony 745A	12 90	11 21	Vealed
	Colony 746A	17 25	11 21	Vealed
	Colony Wimple Romeo	90 55	200 00	Sold



COLONY I ARM FROM THE AIR LOOKING NORTH

CALVES DEPARTMENT—Continued.
PROFIT AND LOSS ACCOUNT, MARCH 31ST, 1929—Continued.

Name of Animal.	Asset Value.	Selling-price.	Remarks.
Mar. 31. Colony Koba McKinley 65th.....	\$77.60	\$127.50	Sold.
Colony Deirdre Romeo.....	138.00	150.00	Sold.
Colony Fayne Sir Bessie.....	207.00	150.00	Sold.
Hides sold.....		18.58	
	\$2,212.27	\$1,973.30	
	1,973.30		
Loss	\$238.97		

Abstract of Loss.

Loss by deaths	\$100.32
Loss by butchered	296.75
	<u>\$397.07</u>
Profit on sales	158.10
	<u>\$238.97</u>

WORK-HORSE DEPARTMENT.

SALES AND DEATHS ACCOUNT, MARCH 31ST, 1929.

Name of Animal.	Asset Value.	Selling-price.	Remarks.
1928.			
April 30. Horse "Barney"	\$25.00	\$25.00	Sold.
Oct. 31. Horse "Repertoire"	5.00		Died.
Dec. 31. Horse "Levi"	50.00		Destroyed.
1929.			
Mar. 31. Horse "Tommy"	50.00	25.00	Sold.
Horse "Nigger"	150.00	25.00	Sold.
Loss at inventory	375.00		
	\$655.00		
	75.00		
Loss	\$580.00		

WORK-HORSE LABOUR ACCOUNT, MARCH 31ST, 1929.

Salaries and upkeep	\$9,002.53
Feed	7,427.71
Board	3,115.00
	<u>\$19,545.24</u>
Less credit for manure	251.00
	<u>\$19,294.24</u>
Horse-labour charged to crops and other departments at 50 cents per horse-hour.....	22,269.00
	<u>\$2,974.76</u>
Profit	<u>\$2,974.76</u>

NOTE.—Against cost of \$19,294.24, 44,538 hours of horse-labour were performed at a cost of 43½ cents per horse-hour.

WORK-HORSE DEPARTMENT—*Continued*

HORSE LABOUR PERFORMED, MARCH 31ST, 1929

1928	Hours	Cost
April	3,323	\$1,365 10
May	4,338	1 735 60
June	3 672	1,716 35
July	3,968	1,786 69
August	4,300	1 647 07
September	3,849	1,529 65
October	3,696	1,537 40
November	3,413	1,550 04
December	3,231	1,664 05
1929		
January	3 552	1,593 23
February	3 451	1,611 26
March	3,745	1,808 80
	<u>44,538</u>	<u>\$19,545 24</u>
<i>Less credit for manure</i>		251 00
		<u><u>\$19,294 24</u></u>

SHEEP DEPARTMENT

PROFIT AND LOSS ACCOUNT, MARCH 31ST, 1929

By sales—	<i>Receipts:</i>	
Dividend, Canadian Co operative Wool growers		\$0 80
Pelts and wool sold		259 49
Live sheep sold		1,195 07
Lamb and mutton supplied Hospitals		466 46
Lamb and mutton supplied farm employees		5 24
Inventory, March 31st, 1929		1,987 00
		<u>\$3,914 06</u>
	<i>Expenses</i>	
Feed		\$510 65
Vouchers		78 12
Pasturage		424 00
Inventory, March 31st, 1928		2,748 00
		<u>3,760 77</u>
Profit		<u><u>\$153 29</u></u>

HOG DEPARTMENT

PROFIT AND LOSS ACCOUNT, MARCH 31ST, 1929

By sales—	<i>Receipts</i>	
Live hogs		\$843 61
Pork, bacon etc, supplied New Westminster Hospital		1 910 91
Pork, bacon, etc, supplied Essondale Hospital		23,725 35
Sundry, supplied Colony Farm		40 85
		<u>\$26,520 72</u>
Inventory, March 31st, 1929—		
Feed, etc	\$940 25	
Hogs	10,012 50	
	<u>10 952 75</u>	
		<u><u>\$37,473 47</u></u>
<i>Carried forward</i>		<u>\$37,473 47</u>

HOG DEPARTMENT—*Continued*PROFIT AND LOSS ACCOUNT, MARCH 31ST, 1929—*Continued*

<i>Brought forward</i>			\$37,473 47
	<i>Expenses</i>		
Salaries and upkeep		\$3,576 80	
Board of employees		900 00	
Fuel		100 00	
Feed		14,911 45	
Horse-labour		625 50	
		<hr/>	\$20,093 75
Inventory, March 31st, 1928			12,498 55
			<hr/>
			32,592 30
<i>Profit</i>			<hr/> <hr/>
			\$4,881 17

POULTRY DEPARTMENT

PROFIT AND LOSS ACCOUNT, MARCH 31ST, 1929

	<i>Receipts</i>		
8,081 doz eggs supplied Essondale Hospital		\$2 429 05	
2,209 lb chicken supplied Essondale Hospital		706 88	
Supplies to New Westminster		6 00	
Supplies to Colony Farm		50 79	
		<hr/>	\$3,192 72
Inventory, March 31st, 1929-			
Poultry		\$1,187 60	
Feed		287 25	
		<hr/>	1,474 85
	<i>Expenses</i>		\$4,667 57
<i>Vouchers</i>		\$1,184 25	
Feed		2,008 41	
Horse-labour		339 50	
Board, etc		360 00	
Fuel		75 00	
Inventory, March 31st, 1928		1 562 75	
		<hr/>	5 529 91
<i>Loss</i>			<hr/> <hr/>
			\$862 34

CANNERY

PROFIT AND LOSS ACCOUNT, MARCH 31ST, 1929

	<i>Production</i>		
Supplies to Essondale Hospital		\$15,828 45	
Supplies to New Westminster Hospital		5,507 95	
Inventory, March 31st, 1929		4,988 65	
		<hr/>	\$26,325 05
	<i>Expenses</i>		
Repairs		\$603 62	
Salaries		930 00	
Horse-labour		62 00	
Sugar, spices, etc		2 459 24	
Cans		2 709 38	
Fruit and vegetables		4 469 89	
Fuel		425 00	
Inventory, March 31st, 1928		6,107 45	
		<hr/>	17 766 58
<i>Profit</i>			<hr/> <hr/>
			\$8 558 47

TRUCK GARDEN AND NURSERY

PROFIT AND LOSS ACCOUNT, MARCH 31ST, 1929

Receipts

Produce supplied Hospitals	\$11,388 80
Fruit and vegetables supplied cannery	487 58
Trees and shrubs supplied public institutions	4,706 60
	<hr/>
	\$16 582 98
Inventory, March 31st, 1929	47,503 02
	<hr/>
	\$64,086 00

Expenses

Vouchers	\$3,884 04
Horse labour	2,567 00
Board, etc, of employees	840 00
Fuel	90 00
Fertilizer, etc	325 35
	<hr/>
	\$7,706 39
Inventory, March 31st, 1928	45,733 17
	<hr/>
	53,439 56
	<hr/>
Profit	<u><u>\$10,646 44</u></u>

CROP DEPARTMENT

POTATOS—PROFIT AND LOSS ACCOUNT, MARCH 31ST, 1929

Production

Yield of crop, 1,508,205 lb	\$13 669 45
-----------------------------	-------------

Expenses

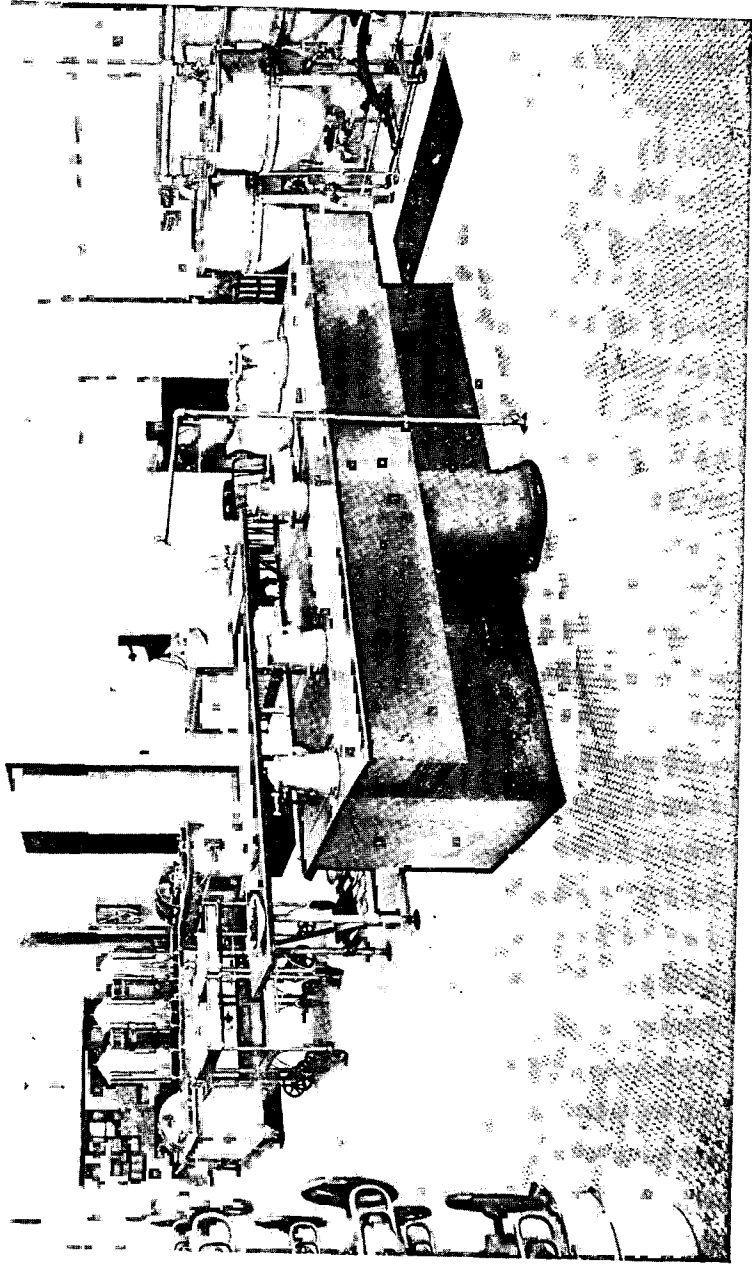
Ploughing	\$417 00
Manure and hauling	1 645 00
Fertilizer, etc	846 93
Seed	1,097 55
Cultivating	784 00
Digging and hauling	1 267 75
	<hr/>
	6,058 23
	<hr/>
Profit	<u><u>\$7 611 22</u></u>

Field No 2, 25½ acres, Field No 3, 9 acres; Field WR 4, 18½ acres, total, 53 acres
Yield per acre, 14 2 tons, cost per ton, \$8 03

OATS—PROFIT AND LOSS ACCOUNT, MARCH 31ST, 1929

Production

Yield of oats, 115,350 lb	\$1,730 25
Yield of straw, 145,080 lb (1,560 bales)	780 00
Yield of sundries	248 40
	<hr/>
	\$2,758 65
	<hr/>
<i>Carried forward</i>	\$2,758 65



KITCHEN AND SERVERY, ACUTE BUILDING, ESSONDALE.

CROP DEPARTMENT—Continued

OATS—PROFIT AND LOSS ACCOUNT, MARCH 31ST, 1929—Continued

<i>Brought forward</i>		\$2,758 65
<i>Expenses</i>		
Ploughing		\$203 50
Seed and seeding		285 00
Cultivating		376 50
Sundries		82 57
Baling straw		112 50
Cutting and hauling		331 00
		1,391 07
Profit		\$1 367 58

Field A, 2 acres, Field No 1, 6 acres, Field No 8 20 acres, Field W R 1, 12 acres; Field W R 5, 6 acres, total, 46 acres Yield per acre, 2,507 lb oats, cost per ton \$10 60

HAY—PROFIT AND LOSS ACCOUNT, MARCH 31ST, 1929

<i>Production</i>		
Yield of hay, 400 000 lb		\$2 600 00
<i>Expenses</i>		
Ploughing		\$512 00
Cultivating		380 50
Seed		471 35
Mowing and hauling		478 50
		1,842 35
Profit		\$757 65

Field W R 1, 16 acres, Field W R 6, 37 acres, Field W R 7, 30 acres, total, 83 acres Yield per acre 2 41 tons, cost per ton, \$9 21

ENSILAGE—PROFIT AND LOSS ACCOUNT, MARCH 31ST, 1929

<i>Production</i>		
Yield of clover, 340,000 lb		\$850 00
Yield of green feed, 67,000 lb		167 50
Yield of green oats, 271 000 lb		677 50
Yield of peas, oats, and vetches, 549 000 lb		1 372 50
Yield of corn, 500,000 lb		1 250 00
		\$4,317 50
<i>Expenses</i>		
Ploughing		\$886 50
Manure and hauling		498 00
Seed and seeding		485 25
Fertilizer		84 50
Cultivating		474 00
Mowing and hauling		926 00
		3,354 25
Profit		\$963 25

Field A, 13 acres, Field W R 1, 10 acres, Field W R 5, 5 acres, Field No 1, 16 acres, Field W R 4, 9 acres, Field No 8, 38 acres; Field No 3, 10 acres, total, 101 acres Yield per acre, 8 55 tons, cost per ton, \$3 88

CROP DEPARTMENT—Continued

ONIONS—PROFIT AND LOSS ACCOUNT, MARCH 31ST, 1929

<i>Production</i>		
Yield, 237 bundles green onions		\$11 85
Yield, 45,065 lb onions		859 80
		\$871 65
<i>Expenses</i>		
Ploughing		\$22 50
Fertilizer, etc		70 50
Cultivating		26 00
Hauling		12 00
		131 00
Profit		\$740 65

Field No 6, 1.5 acres Yield per acre, 15.2 tons, cost per ton, \$5.81 (exclusive of patient-labour)

CARROTS—PROFIT AND LOSS ACCOUNT, MARCH 31ST, 1929

<i>Production</i>		
Yield, 130,000 lb		\$325 00
<i>Expenses</i>		
Ploughing		\$29 50
Fertilizer		30 00
Manuring		145 00
Cultivating		28 00
Seed		37 50
Hauling		68 00
		333 00
Loss		\$13 00

Field No 2 2.5 acres Yield per acre, 26 tons, cost per ton, \$5.20

ROOTS—PROFIT AND LOSS ACCOUNT, MARCH 31ST, 1929

<i>Production</i>		
Yield, 824,000 lb		\$2 060 00
<i>Expenses</i>		
Ploughing		\$108 00
Cultivating		348 00
Manuring		427 00
Fertilizer		282 40
Seed		116 25
Hauling		148 50
		1 430 15
Profit		\$629 85

Field No 3 6 acres, Field No 7, 17.75 acres, total, 23.75 acres Yield per acre, 17.35 tons, cost per ton, \$3.47

TRACTOR ACCOUNT

PROFIT AND LOSS ACCOUNT, MARCH 31ST, 1929

820½ hours' work		\$1,641 00
	<i>Expenses</i>	
Salaries, etc		\$768 06
Board of employees		210 00
Repairs		127 25
Gasoline		230 33
		<u>1 335 64</u>
Profit		<u>\$305 36</u>

GENERAL EXPENSES OF MAINTENANCE AND ADMINISTRATION

PROFIT AND LOSS ACCOUNT MARCH 31ST, 1929

	<i>Expenses</i>	
Salaries and vouchers		\$23 636 18
Horse-labour		1,745 50
Dairy supplies to employees		1 266 20
Sturdy supplies to employees		154 63
Board of employees		1,000 00
Fuel		460 00
		<u>\$28,262 51</u>
Proportion headquarters expenses		2 069 06
General repairs (through Public Works Department)		3,924 31
		<u>\$34 255 88</u>

MISCELLANEOUS STATEMENTS, INVENTORIES, ETC

ESSONDALE HOSPITAL—PRODUCE SUPPLIED BY COLONY FARM, MARCH 31ST, 1929

Dairy produce—		
Milk, 921,874 lb		\$41,484 37
Cream, 1 926 25 lb		577 86
Butter, 2,004½ lb		1,002 25
Buttermilk, 2,585 lb		51 70
		<u>\$43,116 18</u>
Meats—		
Beef, 15,645 lb		\$1,994 70
Veal, 2,815 lb		516 98
Mutton, 812 lb		150 46
Lamb, 1,369 lb		316 00
Pork roasts, 39 824 lb		11,947 20
Liver, etc, 16 290 lb		1,629 00
Sausage, 11,882 lb		3,020 50
Bacon and ham, 10 147 lb		3,551 45
Green bacon, 7,283 lb		2 195 65
Lard, 6,301 lb		1,260 20
Sundries		276 55
		<u>26,858 69</u>
<i>Carried forward</i>		<u>\$69,974 87</u>

MISCELLANEOUS STATEMENTS, INVENTORIES, ETC—*Continued*ESSONDALE HOSPITAL—PRODUCE SUPPLIED BY COLONY FARM, MARCH 31ST, 1929—*Continued*

	<i>Brought forward</i>	\$69,974 87
Poultry—		
Eggs, 8,081 doz	\$2,429 05	
Chicken, 2,210 lb	706 88	
	—————	3,135 93
Fruit and vegetables—		
Fresh	\$21 590 35	
Canned	15,828 45	
	—————	37,418 80
Sundries—		
Horse labour	\$6,962 00	
Gasoline	119 91	
Ice	223 50	
Shrubs and trees	704 00	
	—————	8,009 41
		—————
Total		\$118,539 01
		=====

NEW WESTMINSTER HOSPITAL—PRODUCE SUPPLIED BY COLONY FARM, MARCH 31ST, 1929

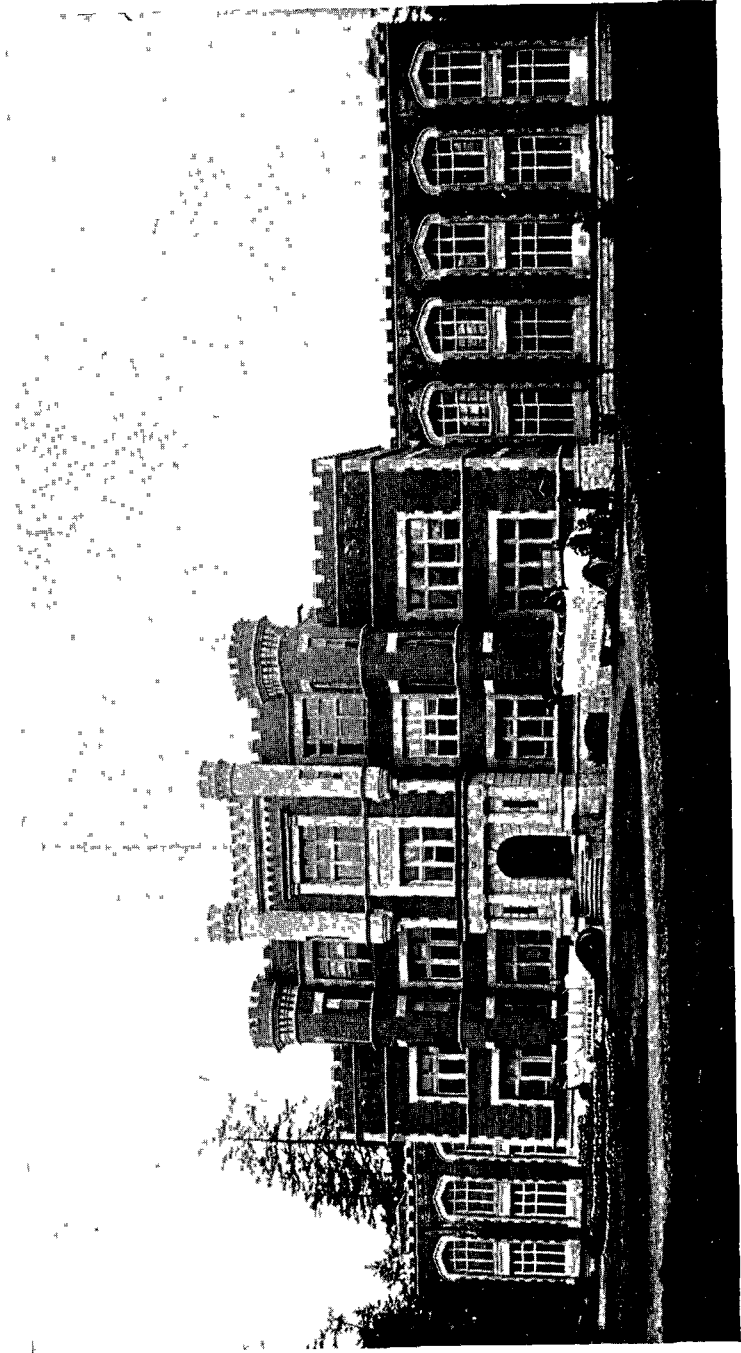
Dairy produce—		
Milk, 310,630 lb	\$13,978 35	
Cream, 1,790 lb	537 00	
	—————	\$14,515 35
Meats—Pork		1,910 91
Fruit and vegetables—		
Fresh	\$4,197 90	
Canned	5,507 95	
	—————	9,705 85
Sundries—		
Horse labour	\$2,100 00	
Miscellaneous	6 00	
	—————	2,106 00
		—————
Total		\$28,238 11
		=====

ACCOUNTS RECEIVABLE, MARCH 31ST, 1929

Sundry amounts due for live stock, etc., sold	\$30 47
	=====

REMITTANCES TO TREASURY, MARCH 31ST, 1929

Sundry remittances to Treasury during the year 1928-29 in payment of live stock and produce sales	\$151,292 25
	=====



PROVINCIAL MENTAL HOME, SAANICHTON, B.C.

MISCELLANEOUS STATEMENTS, INVENTORIES, ETC—*Continued*

NURSERY STOCK SUPPLIED TO GOVERNMENT INSTITUTIONS, SCHOOLS, ETC IN THE PROVINCE,
MARCH 31st, 1929

School Board—	
Steveston	\$316 40
Bainaby	299 10
Oak Bay	82 80
Trail	149 00
Sandwich	77 50
Salmon Arm	48 50
Victoria	23 00
Matsqui	232 00
Qualicum Beach	53 00
Cranbrook	24 00
Tranquille Sanatorium Tranquille	1,516 00
Old People's Home Vancouver	78 00
Oliver Park, New Westminster	191 00
Game Farm, Victoria	64 80
Court house, Prince Rupert	122 50
Government Engineer Lillooet	154 00
Government Agent, Smithers	59 00
Parliament Buildings, Victoria	37 00
Shaughnessy Military Hospital, Vancouver	134 00
Boys' Industrial School, Coquitlam	341 00
	<hr/>
Total	\$4,002 60
	<hr/> <hr/>

COLONY FARM NURSERY—SUMMARY OF INVENTORIES MARCH 31st, 1929

Deciduous ornamental trees	\$16,942 65
Evergreen trees and shrubs	8,562 25
Climbing plants and vines	499 75
Shrubs and small trees	6,150 05
Seedlings and young stock (deciduous)	721 86
Seedlings and young stock (evergreen)	1,730 22
Herbaceous perennials, etc	1,473 50
Reeds and grasses	225 00
Cuttings, grafts, and budded stock	217 43
Grafts and buds	100 16
Orchard and small fruits—	
Prunes and plums	\$1,438 00
Cherries	234 00
Pears	486 00
Apples	1,962 00
Blackberries and raspberries	2,106 00
Red currants	805 00
Strawberries	1,733 00
	<hr/>
	8,764 00
Bees and bee supplies	620 15
Vegetables, etc, in field and storage	1,496 00
	<hr/>
Total	\$47,503 02
	<hr/> <hr/>

 MISCELLANEOUS STATEMENTS, INVENTORIES, ETC—*Continued*

SUMMARY OF EQUIPMENT INVENTORIES, MARCH 31ST, 1929

Equipment in dairy	\$6,016 50
Equipment in horse barn	1,749 50
Farm implements	8,254 00
Pumping and land clearing	10 219 00
Cannery equipment	1 071 50
Piggery and butcher shop	376 00
Carpenter and blacksmith shops	1,187 25
Nursery, poultry, and sundry equipment	4 457 62
	<hr/>
Total	\$33,331 37
	<hr/> <hr/>

 VICTORIA, B C

Printed by CHARLES F. BANFIELD, Printer to the King's Most Excellent Majesty.

1930