

ANNUAL REPORT

OF THE

MENTAL HOSPITALS

OF THE

PROVINCE OF BRITISH COLUMBIA

FOR THE YEAR 1917



PRINTED BY  
AUTHORITY OF THE LEGISLATIVE ASSEMBLY.

---

VICTORIA, B.C.:

Printed by WILLIAM H. CULLIN, Printer to the King's Most Excellent Majesty.  
1918.

*To His Honour Sir FRANK STILLMAN BARNARD, K.C.M.G.,  
Lieutenant-Governor of the Province of British Columbia.*

MAY IT PLEASE YOUR HONOUR:

The undersigned respectfully submits herewith the Annual Report of the Medical Superintendent of the Mental Hospitals for the year 1917.

J. D. MacLEAN,  
*Provincial Secretary.*

*Provincial Secretary's Office,  
February, 1918.*

Members of the Provincial Mental Hospitals and Colony Farm Staffs  
who have joined the Colours.

MAJOR C. E. DOHERTY, M.D.

CAPTAIN D. D. FREEZE, M.D.

LIEUTENANT R. CULLEN.

SERGEANT-MAJOR H. BANHAM.

SERGEANT-MAJOR E. CROFT.

SERGEANT J. O'REILLY.

SERGEANT D. MONTGOMERY.

CORPORAL H. HOULT.

## HONOUR ROLL.

✱  
KILLED IN ACTION.  
✱

S. McCOMBE,  
*Private, 104th Westminster Fusiliers.*

J. McDONALD,  
*Trooper, British Columbia Horse.*

L. BUNDY,  
*Private, 104th Westminster Fusiliers.*

F. UPHAM,  
*Reservist, Somerset Light Infantry.*

W. H. WILLIAMS,  
*Private, 104th Westminster Fusiliers.*

A. MILNE,  
*Private, 62nd Battalion, C.E.F.*

PRIVATE A. TALBOT.  
PRIVATE E. ORME.  
PRIVATE W. D. PATCHELL.  
PRIVATE T. WOODBURN.  
PRIVATE T. E. MORRIS.  
PRIVATE D. PRICE.  
PRIVATE D. HUGHES.  
PRIVATE W. McVIE.  
PRIVATE A. McLENNAN.  
PRIVATE F. E. FRANKUM.  
PRIVATE A. N. CAMPBELL.  
PRIVATE A. HALL.  
PRIVATE A. M. EXLEY.  
PRIVATE BENJ. JONES.  
PRIVATE W. CRYSTALL.

PRIVATE J. LOBAN.  
PRIVATE E. DICKIE.  
PRIVATE F. UPHAM.  
PRIVATE J. McDONALD.  
PRIVATE S. McCOMBE.  
PRIVATE W. H. WILLIAMS.  
PRIVATE A. M. MILLER.  
PRIVATE L. BUNDY.  
PRIVATE G. FARRANT.  
PRIVATE W. ROBERTSON.  
PRIVATE W. HEADRIDGE.  
PRIVATE C. OXENBURY.  
PRIVATE G. B. McNAUGHTON.  
PRIVATE J. DAVIDSON.

PRIVATE S. WICKHAM.  
PRIVATE A. MILNE.  
PRIVATE H. A. SPARROW.  
PRIVATE W. RONALD.  
PRIVATE J. ROBERTSON.  
PRIVATE G. DAVIDSON.  
PRIVATE R. McKECHNIE.  
PRIVATE H. LONSDALE.  
PRIVATE H. W. STRONG.  
PRIVATE A. E. SMITH.  
PRIVATE J. POLLARD.  
PRIVATE E. SANDS.  
PRIVATE H. BAILEY.  
SEAMAN W. MACKIE.

## Officers at New Westminster.

---

J. G. MCKAY, M.D., C.M., *Acting Medical Superintendent.*  
H. C. STEEVES, M.D., C.M., *Assistant Medical Superintendent.*  
E. J. RYAN, M.D., C.M., *Assistant Physician.*

T. H. CAMBRIDGE, <i>Bursar.</i>	F. SPOONER, <i>Acting Chief Male Attendant.</i>
M. H. McCABE, <i>Assistant Bursar.</i>	THOMAS CORMACK, <i>Carpenter.</i>
W. E. HUNT, <i>Clinical Clerk &amp; Stenographer.</i>	J. FRASER, <i>Farmer.</i>
MARIA FILLMORE, <i>Matron.</i>	J. BOOTH, <i>Gardener.</i>
R. REES, <i>Steward and Storekeeper.</i>	D. SCLATER, <i>Painter.</i>
REV. R. LENNIE,	W. F. BEGGS, <i>Tailor.</i>
Church of England,	E. B. JONES, <i>Laundryman.</i>
REV. FATHER MURPHY,	J. MACMILLAN, <i>Shoemaker.</i>
Roman Catholic,	H. OLIVER, <i>Plumber.</i>
W. F. JOHNSTON, <i>Engineer.</i>	

## Officers of Essondale and Colony Farm.

---

J. G. MCKAY, M.D., C.M., *Acting Medical Superintendent.*  
A. L. CREASE, M.D., C.M., *Assistant Physician and Pathologist.*

GOWAN S. MACGOWAN, <i>Bursar.</i>	J. B. FOSTER, <i>Cook.</i>
C. FLETCHER, <i>Assistant Bursar.</i>	A. A. KILLEN, <i>Painter and Decorator.</i>
C. H. GOODING, <i>Analyst.</i>	E. B. STINCHCOMBE, <i>Outside Overseer.</i>
H. W. STRONG, <i>Clinical Clerk's Stenographer.</i>	A. G. PARROTT, <i>Plumber.</i>
J. B. PUMPHREY, <i>Steward and Storekeeper.</i>	R. GOW, <i>Carpenter.</i>
J. L. MALCOLM, <i>Engineer.</i>	E. FITZGERALD, <i>Plasterer and Mason.</i>
REV. C. YATES,	S. F. HAMBLY, <i>Baker.</i>
Church of England,	J. HARGIE, <i>Laundryman.</i>
REV. FATHER MARCUCCI,	A. ROBINSON, <i>Barber.</i>
Roman Catholic,	T. H. MOORE, <i>Farm Superintendent.</i>
G. MATHEWSON, <i>Chief Attendant.</i>	J. F. SIMMONDS, <i>Record Clerk.</i>
T. MOWBRAY, <i>Electrician.</i>	



Driveway to Hospital New Westminster

# REPORT OF MEDICAL SUPERINTENDENT

FOR THE YEAR ENDING DECEMBER 31ST, 1917.

---

PROVINCIAL MENTAL HOSPITAL,

ESSONDALE, B.C., January 31st, 1918.

*The Honourable the Provincial Secretary,  
Victoria, B.C.*

SIR,—As Acting Medical Superintendent of the Provincial Mental Hospitals, I have the honour to submit to you our Forty-sixth Annual Report for the year ending December 31st, 1917.

As in former years, you will find herewith statistical, financial, and working tables, showing the exact movements of the residential population and an accurate accounting of all moneys received and disbursed; also tables covering the work of the various departments carried on throughout the year.

In addition to the above report, which only refers to the Hospitals' records, I will, with your permission, call attention to certain existing social conditions, as I believe it to be the duty of any Medical Superintendent to not only see that his hospital cases are properly treated, but also to make suggestions whereby the percentage of admissions in relation to the population might be lessened.

Before proceeding further, however, I wish to again call to your attention, as I have in my two former reports, and also to personally pay just tribute to the members of our staff who are serving or have served overseas. Six of them have paid the supreme sacrifice, several have returned wounded and invalided from the service, and the balance are still serving with the colours on the Western Front. To the families of those killed in action we extend our most sincere sympathies, and to the members still serving, our best wishes for a safe return and an assurance that their positions will be held for them.

Our admissions during the year totalled 371; 245 being men and 126 women. This total exceeds that of 1916 by eighteen, and makes a total in residence at the end of December, 1917, of 1,301, and a residential increase of ninety-six, which is an average one compared with the past few years, and which will continue yearly on the same basis unless more stringent methods are adopted along etiological and prophylactic lines. To do this with any degree of efficiency more drastic laws will have to be enacted as a protection to the populace, who, through ignorance, continue along the same lines to their own detriment and that of the future generation.

To appreciate the above remarks more fully, I beg to call your attention to the fact that we were able to obtain an hereditary history in seventy-eight, or nearly 20 per cent. of those admitted, and undoubtedly a great many more of those unclassified would come under the same category were we able to obtain an authentic history from them. This condition can be alleviated to a great extent in many ways, but foremost by the Dominion authorities being more strict at ports of entry to Canada, and demanding that all immigrants be thoroughly examined, not only from a physical but from a mental standpoint as well, so that we would be protected not only from those who are actually mental cases, but also from that class who would ordinarily pass muster, but whose progeny would in all probability be mentally deficient, and would either have to undergo treatment in a strictly mental sense or placed in an institution for mentally deficient children.

Second to that of heredity, from a standpoint of etiology, comes syphilis, which was the direct cause of 10 per cent. of our admissions, and of whom all but two were suffering from general paresis, which does not react to treatment. I would therefore again suggest that syphilis be placed in the same category as smallpox, tuberculosis, and other infectious diseases, so that all cases would have to be reported to the health authorities and forced to undergo proper treatment, as the majority come under the influence of charlatans who, through their flash advertising, are reaping a financial harvest at the expense of these unfortunate cases, carrying them along on a false security until their condition reaches a stage where it will not react to treatment.

My reasons for making these statements are that the percentage of admissions of cases of general paresis are on the increase not only in our Hospitals, but in all others that I have had an opportunity of communicating with. In fact, the Province of Ontario has appointed a Commission to obtain statistics that they may draft an Act based on the Western Australian Act, which compels all cases to be reported and treated.

To assist in this work we are at the present time doing a Wassermann test on each admission, and should the case show a positive reaction are notifying the husband or the wife, as the case may be, and are offering to do their blood examination, as well as that of their children, free, so that they may, if necessary, undergo treatment. As an example, in one family where we examined the blood of the parents and children we obtained a negative reaction from the father, but positive ones from each of the children. This routine, if carried out by all hospitals, would undoubtedly decrease in the next decade by at least 50 per cent. the number of admissions of general paresis.

The congenital deficient, who are usually the progeny of the above-mentioned classes, are also on the increase and go to make up a large percentage of what we classify as "chronics." Many of these cases could be treated much more satisfactorily if they were segregated, so that they might be educated to a limited degree, thereby making them more or less self-supporting, but this cannot be done under the present regime.

In addition to these conditions mentioned, I wish also to refer to the fact that we are receiving quite a number of patients from other Provinces, due, I believe, to the lower altitude and milder climate of the Coast area. Would it not be possible to make an interprovincial arrangement whereby these cases would be maintained here at a rate sufficiently high to recompense this Province, or have them returned to their home Provinces?

#### LABORATORY.

During the past year we were again unable to carry on this branch satisfactorily owing to our being short-handed from a medical standpoint, but during the latter part of the year this difficulty was overcome and considerable good work was accomplished, as will be shown in Dr. Crease's report. I personally feel that an up-to-date laboratory is as essential to the welfare of a mental hospital as any other department, as it is only through such a medium that information of a real authentic nature can be obtained. The routine blood and urine examinations will in themselves often bring to our notice an existing condition which would readily have been overlooked had such not been made, and permit us to get the patient under proper treatment at the earliest possible date. Further than the ordinary routine, we are carrying on research-work which I believe will be particularly advantageous to us in the future.

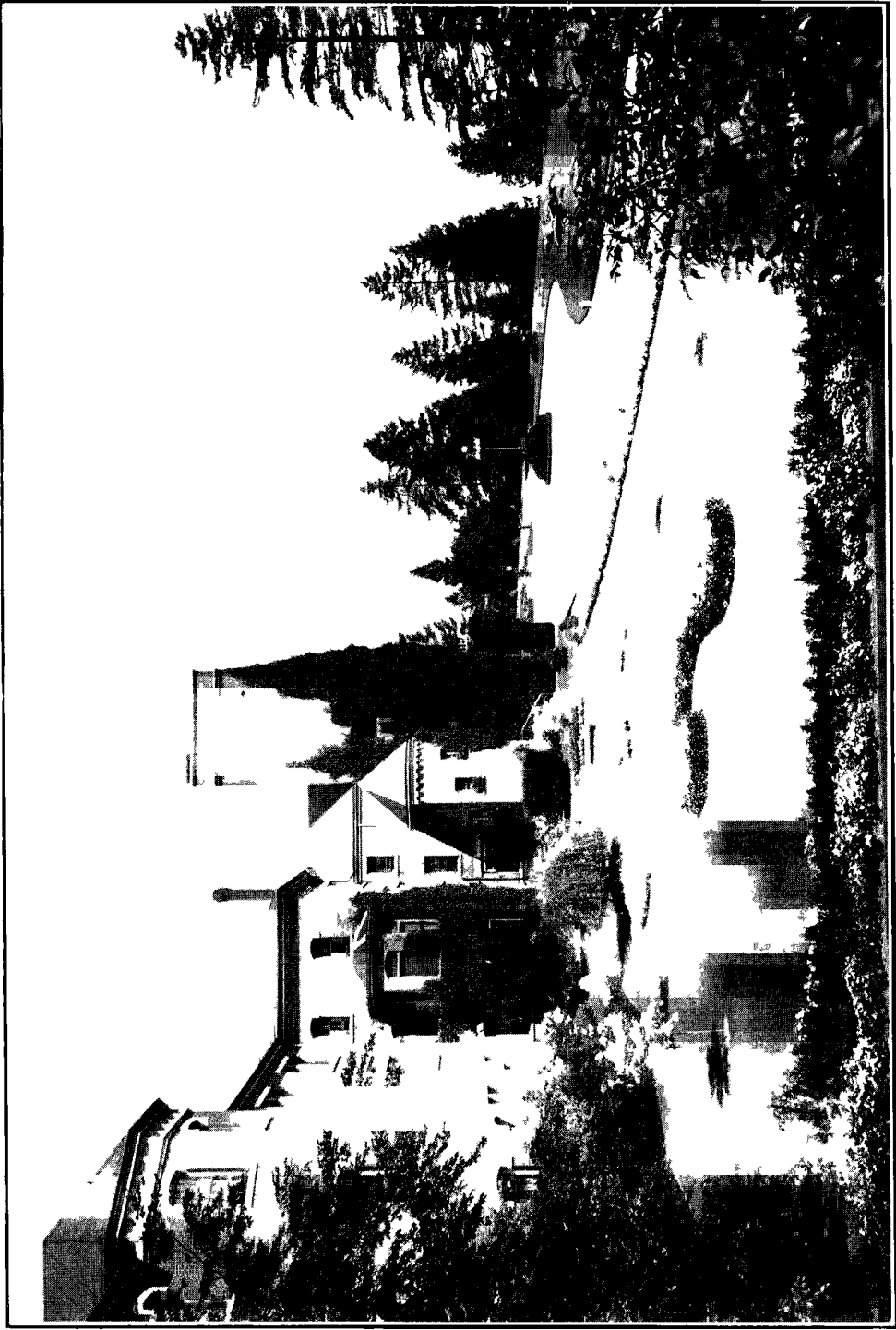
During the latter part of December we had an outbreak of diphtheria, which, although not severe in type, nevertheless caused considerable inconvenience, and had we not had our laboratory working in full force it would have been the cause of a material expenditure of money.

#### DENTISTRY.

In my previous report I called your attention to the placing on our staff, during the year of 1916, of Dr. Smith as dentist to the institutions, who devotes one day of each week to this work. This procedure has proven of inestimable value to the welfare of the patients, as a great percentage of our admissions have neglected their teeth and many are in a deplorable condition, which has a most detrimental effect upon their digestive system. A regular routine examination is made of all wards and cases are treated as required, both from a prophylactic and curative standpoint.

#### AMUSEMENTS AND OCCUPATIONS.

Amusement and occupation are just as much a part of the treatment as medicine or hydrotherapy in psychopathic work, and should be dealt with just as judiciously. From a standpoint of occupation we are, on account of our geographical position and also possessing 1,400 acres of land, much more fortunate than many institutions located in or near large cities, who must necessarily find employment for their patients indoors instead of outside. The greater portion of the residential population of any mental hospital is of the chronic type, and it is for this class of case that regular employment must be found: first, for their physical welfare, and, secondly, that they may to a slight degree aid towards their own maintenance.



Front entrance to Hospital



It is also essential to surround patients with as pleasing an atmosphere as possible, so that they may in a sense get away from their morbid thoughts. This we do by having comfortable recreation-rooms, plenty of suitable literature, and, during the winter months, devoting one evening of each week to moving pictures, which are very highly appreciated by the great majority. During the summer months the opportunity to get outside makes it much easier to find satisfactory amusements.

#### NEW WORK.

During the past year we have endeavoured, even more than ever before, to construct, ourselves, any buildings required by the Hospital, and have erected a new laundry of cement blocks, with double walls having a 2-inch air-space between. This building has a floor area of 100 x 60 feet, and when completed will not have cost more than \$9,000. Had the same been constructed under contract and the same excavation made, it would have cost at least \$20,000, as it was necessary for us to move 6,000 yards of dirt before we could lay our foundation. In addition to this, we have constructed a new cow-barn on the upland at a cost of \$1,200. This is a frame-and-concrete building 32 x 46 feet. We have also cleared 20 acres of land, and moved in all some 25,000 yards of dirt in reinforcing dykes, grading, and road-building. All of the above is extra to the general routine work carried on in connection with the Hospital.

#### EXPENDITURES.

The great national demand for economy has been kept ever before us without in any way interfering with the welfare of our patients, and I am pleased to be able to report that our gross *per capita* cost was 63.52 cents per diem, which is slightly less than that of 1916. In referring to Table D you will note that this charge covers all expenditures, whether paid by voucher or obtained from our farm or nurseries at prices based upon those had we purchased same in the open market. The total expenditure for the two Hospitals is as follows: Paid out by voucher, \$281,682.48, with charges from farm and gardens, together with differences in inventories, \$8,673.36, making a total net expenditure of \$290,355.84. As a partial offset to this expenditure we have remitted to the Treasury \$46,786.02, thereby making a net cost to the Province of \$243,569.82, or 53.28 cents *per capita per diem*.

#### ESTIMATES FOR MAINTENANCE.

Owing to the steady increase in the cost of all commodities required for the maintenance of our Hospitals and farm, it has been very difficult to estimate with any degree of accuracy the amounts that will be required, but after conferring with many of the leading merchants in various lines I have submitted for your approval the following: For the Public Hospital for Insane, New Westminster, \$156,964; for the Mental Hospital, Essondale, \$206,020.72; for Colony Farm, \$37,935; and for the nursery, \$3,880. We have based the above estimates upon a *per capita* cost of \$240 per annum, which is some \$9 higher than the cost for the year 1916.

#### REQUIREMENTS.

I have further submitted for your approval estimates as follows:—

Acute or Admission Building .....	\$175,000 00
Residence for Assistant Medical Superintendent .....	4,000 00
Six cottages for employees who should always be on the premises. \$1,200 each .....	7,200 00
Installation of new bake-oven .....	3,000 00
New piggery .....	3,000 00
Clearing land .....	4,500 00

All of the above are most urgently needed if we are to carry on the work with any degree of efficiency.

#### COLONY FARM.

As our farm is maintained under a separate vote, although essentially a part of the Hospitals, I feel that I should, in a sense, make my report under a separate heading. It is now conceded by all authorities that a farm is necessary to carry out a line of treatment which requires outdoor occupation, as well as to supply suitable farm produce, as vegetables, milk, butter, etc.

During the past year we have disposed of a great many of our horses which were not required for farm-work and which were proving an unprofitable investment. In addition to this, we are now relieved of the Sunbury Farm, that the Hospitals had under lease, and which showed an annual deficit of from \$4,000 to \$5,000. We are therefore starting our present calendar year under much more favourable conditions.

As our residential population is increasing annually, so, too, must our dairy herd, and realizing this we have not disposed of any females since the fall of 1914, excepting non-producers, or the destruction of any found infected which might be a source of contagion to the herd. This latter procedure we have rigorously observed by semi-annual tests, as well as general inspection. During the above-mentioned time we have increased the females from 99 to 141 head, and hope by the end of the fiscal year 1918-19 to have sufficient milkers not only to supply the requisite amount of milk required by the Hospitals, but also for the manufacture of the greater part, if not all, of the butter used, which amounts to 100 lb. per day.

The herd, as you know, are all registered Holsteins, and are now conceded to equal, if not excel, any other Canadian herd, and, in addition to supplying our own requirements, gives the dairymen of the Province an opportunity of purchasing animals of a high grade which, when intermingled with their own herds, must necessarily prove beneficial.

In addition to the cattle and horses, we are now running some 150 head of sheep, and hope to increase this number as they have proven a profitable investment.

Incorporated in this report you will find a financial report submitted to me by our Bursar, and in this you will see that for the first time since the inception of the farm it has shown an actual profit, and I am sure that in future this should not only continue, but show a material increase, as I am unable to see any reason why we cannot maintain it on a purely commercial basis without in any way interfering with its original object; i.e., that of the care of the mentally afflicted.

I would suggest that the sum of \$2,000 be set aside as a contingent or trading account, so that we might be able to purchase feeders to utilize any superfluous feed or pasture that we might have, and these could be sold or used as meat for the Hospitals.

In addition to the above, would it not be feasible to have the moneys received from the sale of stock credited to the Colony Farm vote, so that the Public Accounts would only show the actual profit or deficit, as the case might be?

#### ACKNOWLEDGMENTS.

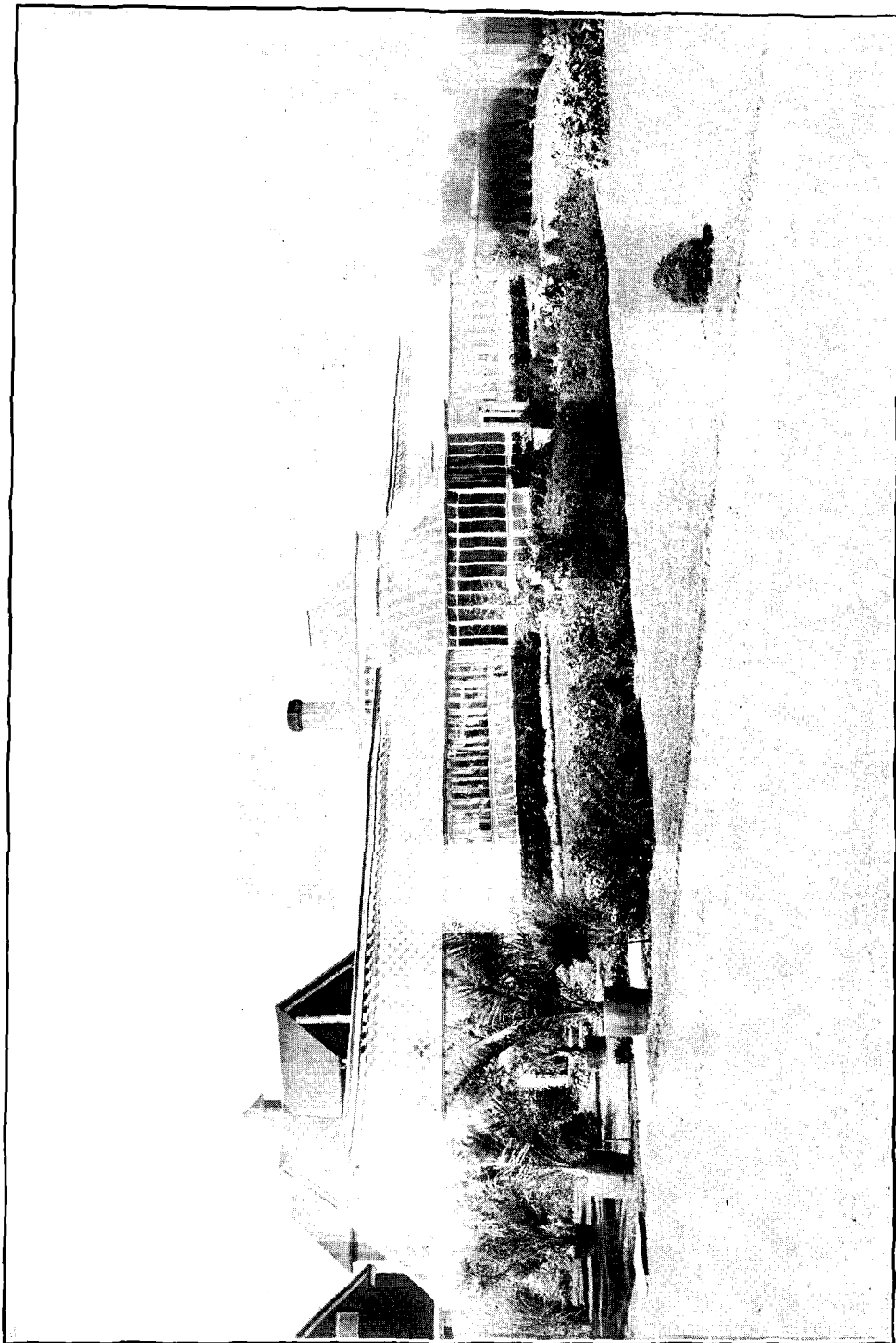
I wish to extend to all members of the staff my most sincere thanks for their able assistance in carrying on the work of the Hospitals, as it is only through well co-ordinated action that the best results can be obtained.

To my medical associates, Dr. H. C. Steeves, Assistant Medical Superintendent at New Westminster, and Dr. A. L. Crease, Assistant Medical Superintendent at Essondale, and Dr. E. J. Ryan, Assistant Physician, I feel specially indebted, as at many times during the past year their work has been exceptionally strenuous and trying.

In conclusion, I beg to offer my sincere appreciation to yourself for the able assistance that you have granted me in endeavouring to carry on the work of caring for those cases who must necessarily come under treatment in the Mental Hospitals which are under your Department.

I have the honour to be,  
Sir,  
Your obedient servant,

J. G. MCKAY,  
*Acting Medical Superintendent.*



Greenhouse, New Westminster.

TABLE A.

Showing the Average Number of Patients in Residence each Year, the Total Amounts spent for Maintenance, and the *Per Capita* Cost.

Year.	Average Number in Residence.	Maintenance Expenditure.	<i>Per Capita</i> Cost.
1872 (81 days).....	16.57	\$ 2,265 25	\$616 00
1873.....	16.07	7,841 94	487 98
1874.....	16.76	8,232 41	491 20
1875.....	27.42	9,892 38	360 77
1876.....	36.41	12,558 18	344 91
1877.....	34.61	12,917 17	373 26
1878.....	36.52	13,985 05	382 93
1879.....	38.17	10,253 72	268 63
1880.....	45.42	10,552 18	232 32
1881.....	47.18	10,691 76	226 62
1882.....	47.86	11,343 65	237 02
1883.....	48.73	11,829 11	242 75
1884.....	48.70	11,843 94	243 20
1885.....	54.67	15,555 87	284 54
1886.....	59.11	15,334 43	259 42
1887.....	73.55	15,945 22	216 70
1888.....	79.43	16,261 06	204 72
1889.....	71.30	15,657 79	219 60
1890.....	78.78	17,577 80	223 13
1891.....	119.87	21,757 03	181 50
1892.....	125.24	23,518 37	187 80
1893.....	133.92	25,904 98	193 36
1894.....	148.64	26,495 83	178 25
1895.....	162.97	31,587 89	193 83
1896.....	171.43	32,001 40	186 67
1897.....	188.91	36,224 76	191 75
1898.....	216.53	46,420 25	214 38
1899.....	226.44	54,917 45	242 52
1900.....	243.24	59,349 20	244 00
1901.....	269.56	55,406 08	205 54
1902.....	296.62	55,345 65	186 59
1903.....	332.23	59,353 57	178 65
1904.....	351.55	66,052 76	187 89
1905.....	340.90	63,342 07	185 80
1906.....	374.57	66,596 69	177 79
1907.....	419.24	74,874 64	178 59
1908.....	490.80	90,269 49	183 92
1909.....	526.85	96,586 32	183 32
1910.....	563.33	103,900 44	184 43
1911.....	641.02	126,782 50	197 78
1912.....	736.72	130,924 06	177 71
1913, M.H., New Westminster.....	550.54	119,663 71	217 36
1913, M.H., Essondale (9 months).....	384.07	71,079 84	184 76
1914, M.H., New Westminster.....	487.24	125,981 45	258 56
1914, M.H., Essondale.....	489.07	131,420 44	268 36
1915, M.H., New Westminster.....	515.74	123,021 70	238 53
1915, M.H., Essondale.....	560.56	123,878 43	220 99
1916, M.H., New Westminster.....	524.17	116,052 21	221 40
1916, M.H., Essondale.....	633.13	155,698 37	245 91
1917, M.H., New Westminster.....	535.66	124,124 68	231 72
1917, M.H., Essondale.....	716.35	166,231 51	232 05

TABLE B.  
Showing Analysis of the *Per Capita* Cost.

Year.	Salaries.	Provisions.	Clothing.	Fuel and Light.	Furniture.	Medicines.	Miscellaneous.	Total.
1872.....	\$279 38	\$184 03	\$55 81	\$22 44	\$15 55	\$10 18	\$49 30	\$616 69
1873.....	221 48	166 81	14 55	23 65	21 59	7 74	32 16	487 98
1874.....	231 10	152 10	22 07	23 98	28 36	7 78	25 81	491 20
1875.....	153 82	113 40	13 98	16 88	25 45	6 73	30 51	360 77
1876.....	143 34	114 45	18 68	22 75	17 90	2 86	24 93	344 91
1877.....	177 15	126 75	20 69	4 66	20 75	3 74	19 52	373 26
1878.....	176 16	124 23	30 43	13 94	7 20	9 16	21 82	382 93
1879.....	134 27	95 10	3 25	15 91	6 39	6 31	7 40	268 63
1880.....	111 84	87 71	5 74	14 06	6 00	3 63	3 34	332 32
1881.....	112 44	81 14	6 86	12 73	5 55	2 56	5 34	226 62
1882.....	121 51	84 52	7 05	12 30	4 54	3 49	3 61	237 02
1883.....	123 81	92 56	6 03	11 04	4 26	2 24	2 82	242 75
1884.....	124 02	90 64	7 03	12 43	4 14	2 77	2 18	243 20
1885.....	169 05	84 33	6 33	15 05	3 90	2 93	2 95	284 54
1886.....	159 03	69 35	5 49	16 20	3 72	1 59	4 04	259 42
1887.....	127 80	59 10	5 88	15 38	3 88	93	3 81	216 78
1888.....	118 34	60 47	4 41	13 90	3 11	2 09	2 40	204 72
1889.....	131 70	59 11	7 20	12 93	4 13	2 07	2 46	219 60
1890.....	121 54	62 77	9 02	17 31	4 00	1 29	7 19	223 12
1891.....	88 35	54 79	3 83	20 43	3 40	1 89	8 81	181 50
1892.....	94 25	56 74	4 69	20 53	3 35	1 80	6 42	187 80
1893.....	95 50	53 55	5 43	22 60	3 39	2 69	10 20	193 36
1894.....	87 76	57 07	5 25	18 83	2 98	1 43	4 93	178 25
1895.....	90 83	61 15	9 90	20 41	2 51	3 10	5 93	193 83
1896.....	89 13	55 93	6 30	20 29	2 56	3 63	8 83	186 67
1897.....	89 09	58 18	8 36	19 11	2 95	3 86	10 20	191 75
1898.....	94 68	69 43	9 94	21 82	2 76	5 12	10 62	214 37
1899.....	113 31	72 91	8 31	33 96	2 50	2 73	8 80	242 52
1900.....	116 04	72 62	9 06	32 10	2 15	1 71	10 32	244 00
1901.....	99 16	66 65	10 12	18 52	3 25	1 07	6 77	205 54
1902.....	87 47	61 13	7 95	15 25	4 13	1 20	9 46	186 59
1903.....	82 36	57 86	8 58	14 77	3 24	1 91	9 93	178 65
1904.....	87 43	60 01	6 85	17 84	4 48	2 10	9 18	187 89
1905.....	92 17	54 09	5 99	17 93	3 83	2 03	9 76	185 80
1906.....	88 76	53 15	5 16	15 92	3 57	1 21	10 02	177 79
1907.....	89 18	48 47	5 81	19 82	3 02	1 57	10 72	178 59
1908.....	90 93	49 17	6 61	17 63	4 56	1 79	13 23	183 92
1909.....	94 27	53 41	8 16	13 02	2 78	84	10 84	183 32
1910.....	95 97	48 43	7 87	21 32	2 02	1 15	7 67	184 43
1911.....	97 44	58 08	9 39	18 84	1 12	1 87	11 04	197 78
1912.....	78 40	56 37	10 09	19 36	1 79	1 50	10 20	177 71
1913, M.H., New West.	102 37	54 07	9 43	25 27	4 74	3 21	18 27	217 36
1913, M.H., Essondale.	93 56	49 90	5 50	25 13	55	1 02	14 10	184 76
1914, M.H., New West.	115 72	68 15	2 99	24 13	69	2 64	44 24	258 56
1914, M.H., Essondale.	113 06	81 42	15 49	28 93	4 14	1 19	24 13	268 36
1915, M.H., New West.	110 94	64 32	7 57	20 30	....	1 88	33 52	238 53
1915, M.H., Essondale.	95 25	62 84	9 44	24 87	1 14	56	26 89	220 99
1916, M.H., New West.	105 89	74 96	2 58	18 52	....	1 45	18 00	221 40
1916, M.H., Essondale.	89 26	75 18	17 76	26 96	4 98	42	31 35	245 91
1917, M.H., New West.	103 41	72 20	10 52	18 29	....	2 38	24 92	231 72
1917, M.H., Essondale.	83 57	79 98	18 92	23 39	4 77	81	20 61	232 05

TABLE C.  
Showing the Total Expenditure of the Mental Hospital annually since its Inception, analysed under its Various Headings.

Year.	Salaries.	Provisions.	Clothing.	Fuel and Light.	Furniture (estimated).	Medicines, etc.	Miscellaneous.	Total of Current Expenditure.	Expenditure on Capital Account.				
									New Furniture.	Library.	Surgical Instruments.	Lands and Works.	
1872-87.	\$01,899 70	\$39,567 24	\$6,482 84	\$0,317 03	\$5,331 52	\$2,307 04	\$6,131 55	\$181,042 26	\$2,600 00				\$917 26
1888.	9,399 96	4,803 57	350 17	1,103 86	247 24	165 60	190 66	16,261 06			\$ 32 00		224 34
1889.	9,300 62	4,214 19	513 73	922 00	293 69	147 76	175 80	15,657 79					625 56
1890.	9,575 13	4,945 57	710 64	1,363 52	315 28	101 90	565 96	17,577 80	2,800 00				2,181 91
1891.	10,590 28	6,568 27	459 38	2,449 09	406 84	226 31	1,056 66	21,757 03	900 00				1,001 86
1892.	11,803 83	7,106 64	587 48	2,571 26	418 82	226 19	804 15	23,518 37					433 99
1893.	12,790 28	7,172 53	729 38	3,029 00	452 55	362 08	1,369 16	25,904 98	650 00	\$ 19 00	10 75		718 49
1894.	13,044 16	8,492 53	771 05	2,799 87	442 69	212 86	732 67	26,495 83	200 00				170 32
1895.	14,802 47	9,963 54	1,611 96	3,324 54	419 01	502 94	963 47	31,587 89	1,800 00				1,915 28
1896.	15,280 62	9,588 22	1,079 85	3,479 46	459 36	623 24	1,511 05	32,001 40	800 00		148 01		1,126 74
1897.	16,829 76	10,991 05	1,579 08	3,610 03	557 97	728 73	1,928 14	36,224 76	1,200 00	5 15	19 00		848 38
1898.	20,602 31	15,032 71	2,153 11	4,725 96	598 05	1,109 66	2,298 45	46,420 25	2,700 00		6 39		5,320 30
1899.	25,658 15	16,511 05	1,882 13	7,690 35	566 86	617 27	1,991 64	54,917 45	1,300 00	8 60			2,518 80
1900.	28,224 06	17,665 60	2,203 97	7,807 15	521 96	415 10	2,510 46	59,349 20	2,400 00	29 10	11 89		1,806 10
1901.	26,729 01	17,967 31	2,727 11	4,993 67	875 30	288 40	1,823 28	55,406 08	1,840 53	25 10	14 65		5,175 20
1902.	25,945 89	18,132 13	2,359 90	4,525 45	1,221 87	354 38	2,806 03	55,345 65	1,157 47	104 20	19 20		5,561 42
1903.	27,362 37	19,222 50	2,850 19	4,906 22	1,077 73	634 16	3,300 40	59,353 57	1,723 70	111 48	9 00		8,426 70
1904.	30,735 95	21,096 19	2,409 34	6,271 53	1,574 84	738 85	3,226 04	66,052 76	1,463 48	132 53	16 95		4,583 88
1905.	31,421 45	18,437 99	2,043 45	6,110 76	1,306 22	663 49	3,328 71	63,342 07	1,711 84	91 47	69 15		3,981 72
1906.	33,243 80	19,908 19	1,934 15	5,965 32	1,337 80	453 41	3,754 92	66,596 69	1,365 76	100 30	114 16		5,564 03
1907.	37,304 21	20,326 99	2,439 64	8,314 36	1,265 63	655 66	4,498 15	74,874 64	4,352 22	150 88	144 63		9,410 66
1908.	44,626 20	24,132 49	3,244 77	8,652 81	2,239 68	877 40	6,496 14	90,269 49	5,646 86	127 50	91 01		10,775 00
1909.	49,665 85	28,142 65	4,298 91	6,856 11	1,465 79	441 59	5,715 42	96,586 32	2,598 95	89 58	21 30		16,615 10
1910.	54,049 80	27,278 49	4,437 29	12,014 30	1,141 57	653 09	4,325 90	103,900 44	4,043 58	139 76	9 50		2,465 08
1911.	62,453 00	37,229 56	6,020 57	12,079 62	722 10	1,200 92	7,076 73	126,782 50	11,169 78	184 75	43 82		14,429 02
1912.	57,755 68	41,531 72	7,433 63	14,266 18	1,318 66	1,105 62	7,512 32	130,924 06	4,477 21	187 46	301 15		13,144 06
1913, New Westminster.	56,359 76	29,767 27	5,191 83	13,909 72	2,608 03	1,767 42	10,060 18	119,663 71	4,697 77	131 93	69 13		17,701 00
1913, Essondale. (9 mos.)	35,993 98	17,271 35	2,117 73	9,669 99	298 76	395 80	5,422 23	71,079 84	46,680 54	212 79			14,904 63
1914, New Westminster.	56,381 62	33,204 11	1,455 28	11,588 11	338 03	1,286 68	21,557 62	125,981 45		4,417 50			10,117 16
1914, Essondale.	55,364 40	39,873 66	7,585 71	14,168 66	2,026 29	584 23	11,817 49	131,420 44	1,087 31				4,236 37
1915, Essondale.	53,392 50	35,225 51	5,287 03	13,942 39	639 67	316 87	15,074 46	123,878 43	841 31				4,628 99
1915, New Westminster.	57,217 21	33,174 90	3,902 49	10,469 03		969 58	17,288 49	123,021 70	1,044 11				5,910 38
1916, New Westminster.	55,501 35	39,294 07	1,349 48	9,696 04		777 94	9,433 33	116,052 21	1,395 09				8,623 88
1916, Essondale.	56,515 64	47,601 27	11,242 29	17,066 96	3,154 13	268 96	19,849 12	165,698 37	2,418 80				14,402 82
1917, New Westminster.	55,393 19	38,674 92	5,639 40	9,795 36		1,275 54	13,346 27	124,124 68	1,538 13				3,455 96
1917, Essondale.	59,862 30	57,294 25	13,555 03	16,759 02	3,415 42	578 58	14,766 91	166,231 51	1,611 63				10,515 80

TABLE D.

Summary Statement showing the Gross and Net *Per Capita* Cost of Insane Patients to the Province in both Institutions.

Public Hospital for Insane, New Westminster—	
Total maintenance vouchers (12 months) .....	\$127,030 73
Colony Farm Account, milk, cream, butter, and vegetables .....	5,862 57
Mental Hospital Account, milk, butter, eggs, bacon, honey, etc. ....	478 22
Mental Hospital Account, cordwood .....	161 00
Nursery Account, vegetables .....	498 60
Inventory of stock on hand, January 1st, 1917 .....	4,067 13
	\$138,098 25
<i>Less</i> Tailors' Department Account, clothing to	
Essondale .....	\$ 5,904 26
,, Shoemakers' Account, boots, slippers, etc.,	
to Essondale .....	989 50
,, live hogs supplied, Essondale .....	2,090 50
,, inventory of stock on hand, December 31st,	
1917 .....	4,989 66
	13,973 92
	\$124,124 33
Mental Hospital, Essondale—	
Total maintenance vouchers (12 months) .....	\$154,651 75
Colony Farm Account, milk, butter, feed, and vegetables .....	11,023 40
Nursery Account, fruit, vegetables, and flowers .....	8,028 89
City Institution Account, clothing .....	5,904 26
,,         ,,         boots and slippers .....	989 50
,,         ,,         live hogs supplied .....	2,090 50
Inventories, January 1st, 1917, stock, stores, coal, tools, etc. ...	7,482 88
,,         ,,         ,,         38 hogs, 8,690 lb. at 9c. ....	782 10
	\$190,863 28
<i>Less</i> supplies to City Institution ( <i>see contra</i> ).. \$ 639 22	
,, board supplied Colony Farm employees, etc. ....	5,329 92
,,         ,,         nursery employees .....	821 25
,,         ,,         public works employees ...	2,871 25
,, inventory, December 31st, 1917, store,	
wards, tools, etc. ....	11,392 08
,, inventory, December 31st, 1917, coal and	
wood .....	1,917 50
,, inventory, December 31st, 1917, 44 hogs,	
8,320 lb. at 14c. ....	1,164 80
,, supplied to nursery .....	495 75
	24,631 77
	166,231 51
Total net expenditure for both institutions (12 months) .....	
	\$290,355 84
<i>Less</i> revenue collected and remitted to Treasury—	
Public Hospital for Insane, New Westminster .....	\$21,435 93
Mental Hospital, Essondale .....	25,350 09
	46,786 02
Total net charge to Province of both institutions .....	
	\$243,569 82
Showing a net yearly <i>per capita</i> cost of \$194.54, or 53.28 cents daily to the Province.	

## REVENUE.

1873. ....	\$1,440 99	1889. ....	\$ 220 00	1905. ....	16,613 18
1874. ....	680 00	1890. ....	599 24	1906. ....	19,058 42
1875. ....	1,342 60	1891. ....	761 15	1907. ....	20,753 35
1876. ....	730 31	1892. ....	2,418 43	1908. ....	25,807 83
1877. ....	799 91	1893. ....	1,585 40	1909. ....	25,845 65
1878. ....	479 42	1894. ....	2,709 53	1910. ....	26,137 38
1879. ....	867 38	1895. ....	4,409 23	1911. ....	30,100 20
1880. ....	1,433 04	1896. ....	3,741 71	1912. ....	35,151 97
1881. ....	614 99	1897. ....	3,816 80	1913. ....	40,756 56
1882. ....	505 18	1898. ....	4,003 79	1914. ....	42,731 83
1883. ....	298 24	1899. ....	4,769 04	1915, New West.	18,046 21
1884. ....	98 35	1900. ....	6,893 33	1915, Essondale.	16,329 72
1885. ....	.....	1901. ....	12,800 76	1916, New West.	18,135 91
1886. ....	50 00	1902. ....	10,926 23	1916, Essondale.	21,889 74
1887. ....	720 59	1903. ....	13,639 64	1917, New West.	21,435 93
1888. ....	750 00	1904. ....	\$15,004 22	1917, Essondale.	25,350 09



---

 LABORATORY REPORT.
 

---

LABORATORY OF PROVINCIAL MENTAL HOSPITAL,  
 ESSONDALE, B.C., December 31st, 1917.

*J. G. McKay, M.D.,*  
*Acting Medical Superintendent, Hospital.*

SIR.—I beg to report that the Laboratory was reopened on December 1st, and during the month the following work was accomplished:—

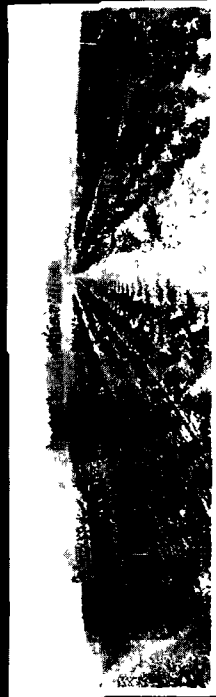
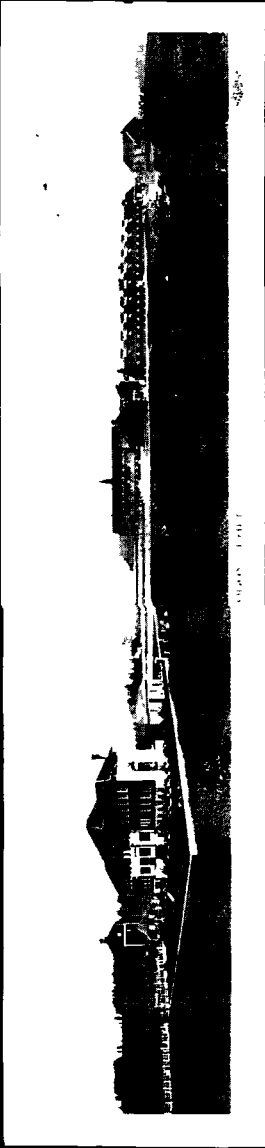
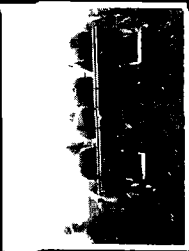
One hundred and ten patients were immunized against typhoid and para-typhoids (*a*) and (*b*) by the use of mixed vaccines of the above bacteria. Media used in bacterial analyses were freshly made up, and also the reagents required for the Wassermann reaction. In addition to this, the routine work carried out was as follows:—

Blood examinations—	
Complete counts .....	2
For malaria .....	1
Wassermann test for syphilis .....	109
Cultures from nose and throat .....	944
Fluids, pleural .....	1
Miscellaneous—	
Urinalyses .....	19
Widal reactions .....	10
Sections from autopsy and surgical operations .....	4
Smears—	
From chancre .....	1
From urethra .....	2

I have, etc.,

A. L. CREASE,  
*Assistant Medical Superintendent and Pathologist.*

---



Scenes from Farm and Nursery.

---

## DENTAL REPORT.

---

PUBLIC HOSPITAL FOR THE INSANE,

NEW WESTMINSTER, B.C., January 31st, 1918.

*Dr. J. G. McKay,*

*Acting Medical Superintendent, Public Hospital for the Insane,  
New Westminster, B.C.*

SIR.—I beg to report the following dental work done on patients in the Mental Hospitals, New Westminster and Essondale, during the year 1917:—

Pyrrhœa treatments .....	16
Extractions .....	522
Cleanings .....	78
Amalgam fillings .....	113
Synth. porcelain fillings .....	7
Cement fillings .....	19
Root fillings .....	13
Plates .....	27
Repairs, bridge .....	2
Repairs, plates .....	16
Abscesses treated .....	10

I have, etc.,

FRANK P. SMITH, D.D.S.

---

## STATISTICAL TABLES

TABLE No 1

Showing the Operations of the Hospitals, New Westminster and Essondale, for the Year 1917, in Summary Form.

Movement of Population	Male	Female	Total	Total		
				Male	Female	Total
In residence, New Westminster December 31st, 1916	209	309	518			
Essondale December 31st, 1916	687		687			
On probation, carried forward from 1916, New Westminster	18	34	52			
Essondale	15		15			
Escaped, carried forward from 1916 New Westminster	4		4			
Essondale	3		3	936	543	1 279
Admitted during 1917—						
By ordinary forms	238	124	362			
By urgency forms	5		5			
From the Yukon	2	2	4	245	126	371
Total under treatment, New Westminster and Essondale, for year 1917				1,181	469	1 650
Discharged during 1917						
From New Westminster—						
As recovered	31	38	69			
As improved	10	8	18			
As unimproved	12	15	27			
On probation and still out	9	33	42			
Escaped, but not discharged	8		8			
Died	34	26	60			
	104	120	224			
From Essondale—						
As recovered	19		19			
As improved	22		22			
As unimproved	11		11			
On probation and still out	22		22			
Escaped, but not discharged	5		5			
Died	46		46			
	125		125			
Total discharged from New Westminster and Essondale				229	120	349
Total in residence New Westminster and Essondale, December 31st, 1917				952	349	1 301
New Westminster—						
Total on books, December 31st, 1916	231	343	574			
Admissions during 1917	245	126	371			
Returned from Essondale	11		11	487	469	956
Discharged during 1917	104	120	224			
Transferred to Essondale during 1917	170		170	274	120	394
Total in residence, New Westminster, December 31st, 1917				213	349	562
Essondale—						
Total on books, December 31st, 1916	705		705			
Transferred from New Westminster during 1917	170		170	875		875
Discharged during 1917	125		125			
Returned to New Westminster during 1917	11		11	136		136
Total in residence, Essondale, December 31st, 1917				739		739
Total in residence, New Westminster, December 31st, 1917				213	349	562
Grand total in residence, New Westminster and Essondale, Dec 31st, 1917				952	349	1 301

Daily average population  
 Maximum number present any one day  
 Minimum  
 Percentage of discharges on admissions  
 recoveries on admissions  
 deaths on whole number under treatment

1,252 01  
 1 305 00  
 1 204 00  
 44 74  
 23 72  
 6 42

TABLE No 2

Showing in Summary Form the Operations of the Hospital since its Inception

Year	Admissions	Discharges		Deaths	Number Resident at the Close of each Year	Increase	Decrease	Whole Number treated	Percentage of Recoveries to Admissions	Percentage of Discharges to Admissions (Deaths excluded)	Percentage of Deaths to Whole Number under Treatment
		Recovered	Not recovered								
1872	18	1		1	16			18	5 55	5 55	5 55
1873	15	10	2	5	14			31	66 66	80 00	16 12
1874	12	4		3	19	5	2	26	33 33	33 33	11 53
1875	29	3	3	10	32	13		48	10 34	26 89	20 83
1876	22	11	3	5	35	3		54	50 00	63 63	9 35
1877	14	4	4	3	38	3		49	28 57	78 57	6 12
1878	16	7	3	8	36		2	54	43 75	62 50	16 16
1879	18	4	1	8	41	5		54	22 22	27 77	14 81
1880	17	5		5	48	7		58	29 41	29 41	8 62
1881	13	5	3	5	48			61	38 46	61 54	8 19
1882	7	3	1	2	49	1		55	42 85	57 14	3 63
1883	8	4	1	3	49			57	50 00	62 50	5 26
1884	10	2	4	2	51	2		59	20 00	60 00	3 33
1885	20	5		5	61	10		71	25 00	25 00	6 94
1886	27	10	6	6	66	5		88	37 03	59 25	6 81
1887	36	15	5	5	77	11		102	41 66	55 55	4 80
1888	26	12	6	3	82	5		103	46 15	69 23	2 87
1889	41	14	5	4	100	18		123	34 15	46 34	3 25
1890	52	17	6	12	117	17		152	32 69	44 23	7 64
1891	49	19	4	20	123	6		166	38 77	46 94	11 69
1892	52	17	10	13	135	12		175	32 69	51 92	6 95
1893	44	14	18	14	133		2	179	31 81	72 72	7 60
1894	80	13	19	19	162	29		213	16 25	40 00	8 92
1895	62	29	11	20	164	2		224	46 77	64 51	8 92
1896	64	23	25	9	171	7		228	35 93	75 00	3 94
1897	74	20	8	14	203	32		246	27 03	37 83	5 69
1898	81	27	13	19	221	18		285	33 33	49 38	6 66
1899	101	31	32	21	234	13		327	30 69	62 37	6 42
1900	113	38	27	29	258	24		356	33 63	57 52	8 14
1901	115	40	20	25	284	26		377	34 78	52 17	6 63
1902	121	30	31	25	311	27		413	24 79	50 41	6 06
1903	139	38	37	26	349	38		466	27 34	53 96	5 57
1904	115	46	26	26	321		28	480	40 00	62 61	5 42
1905	123	43	33	27	348	27		505	33 33	61 78	5 34
1906	150	36*	43	28	388	43		552	23 03	52 06	5 04
1907	221	48	43	39	461	73		666	21 30	41 20	5 08
1908	230	68*	56	57	507	46		765	28 30	53 90	7 44
1909	232	73†	77	40	536	29		816	31 00	64 60	6 40
1910	280	84	82	41	595	48		896	30 00	59 28	4 57
1911	332	67‡	114	60	690	105		1,034	19 57	54 42	5 83
1912	375	74*	128	76	752	62		1,065	18 90	53 80	7 02
1913	380	90‡	146	67	919	167		1,264	22 63	62 10	5 30
1914	402	58	126	74	1,027	108		1,364	14 43	45 77	5 43
1915	332	83	91	89	1,090	63		1,437	25 00	52 41	6 19
1916	353	73‡	96	80	1,205	115		1,527	20 68	47 87	5 24
1917	371	88	78	106	1,301	96		1,650	23 72	44 74	6 42

\* Three not insane

† One not insane

‡ Two not insane

Four not insane

TABLE No. 3A.

Showing the Number of Admissions, Discharges, and Deaths during 1917, New Westminster.

Months.	ADMISSIONS.			DISCHARGES.			DEATHS.		
	Male.	Female.	Total.	Male.	Female.	Total.	Male.	Female.	Total.
January.....	24	9	33	2	..	2	2	5	7
February.....	15	10	25	1	..	1	2	2	4
March.....	15	13	28	4	15	19	2	1	3
April.....	22	14	36	1	..	1	2	..	2
May.....	18	3	21	7	8	15	3	2	5
June.....	18	14	32	1	2	3	5	2	7
July.....	24	6	30	7	12	19	2	2	4
August.....	19	14	33	1	1	2	..	4	4
September.....	20	8	28	1	..	1	..	2	2
October.....	23	17	40	2	1	3	3	3	6
November.....	26	7	33	1	..	1	4	1	5
December.....	21	11	32	25	22	47	9	2	11
Totals.....	245	126	371	53	61	114	34	26	60

TABLE No. 3B.

Showing Number of Admissions, Discharges, and Deaths during 1917, Essondale.

Months.	Admissions, Males only.	Discharges, Males only.	Deaths, Males only.
January.....	21	1	6
February.....	12	..	..
March.....	12	1	5
April.....	17	12	6
May.....	12	4	3
June.....	6	6	5
July.....	19	1	6
August.....	13	..	2
September.....	15	..	1
October.....	17	..	7
November.....	19	22	2
December.....	7	5	3
Totals.....	170	52	46

TABLE No. 4.

Showing the Civil State of Patients admitted during 1917.

Civil State.	Male.	Female.	Total.
Single .....	163	32	195
Married .....	69	85	154
Widowed .....	12	9	21
Divorced .....	1	..	1
Totals .....	245	126	371

TABLE No. 5.

Showing the Religious Denominations of those admitted during 1917.

Religious Denomination.	Male.	Female.	Total.
Agnostic .....	1	..	1
Atheist .....	1	..	1
Confucian .....	10	..	10
Greek .....	6	..	6
Hebrew .....	1	2	3
Hindu .....	4	..	4
Protestant, various denominations .....	160	98	258
Roman Catholic .....	54	20	74
Shinto .....	3	..	3
Unknown .....	2	1	3
No religion .....	3	5	8
Totals .....	245	126	371

TABLE No. 6.

Showing the Degree of Education of those admitted during 1917.

Degree of Education.	Male.	Female.	Total.
Superior .....	11	5	16
Common school .....	206	102	308
Very little .....	13	5	18
None .....	14	13	27
Unknown .....	1	1	2
Totals .....	245	126	371

TABLE No. 7.  
Showing the Nationality of those admitted during 1917.

Nationality.	Male.	Female.	Total.
Alsace.....	..	1	1
Australia.....	2	..	2
Austria.....	12	..	12
Barbados.....	1	..	1
Bavaria.....	1	..	1
China.....	11	..	11
Denmark.....	4	2	6
England.....	58	42	100
Finland.....	4	3	7
France.....	..	1	1
Germany.....	9	1	10
Hungary.....	1	..	1
India.....	5	..	5
Ireland.....	9	7	16
Italy.....	9	4	13
Japan.....	3	..	3
Newfoundland.....	1	1	2
Norway.....	7	1	8
Poland.....	1	..	1
Russia.....	2	..	2
Scotland.....	18	8	26
South Africa.....	..	1	1
Sweden.....	4	1	5
Syria.....	..	1	1
United States.....	18	12	30
Wales.....	2	..	2
Yukon.....	..	1	1
Unknown.....	..	2	2
Canada—			
Alberta.....	1	..	1
British Columbia.....	19	13	32
Manitoba.....	3	4	7
New Brunswick.....	6	2	8
Nova Scotia.....	5	3	8
Ontario.....	20	9	29
Prince Edward Island.....	3	1	4
Quebec.....	6	5	11
Totals.....	245	126	371



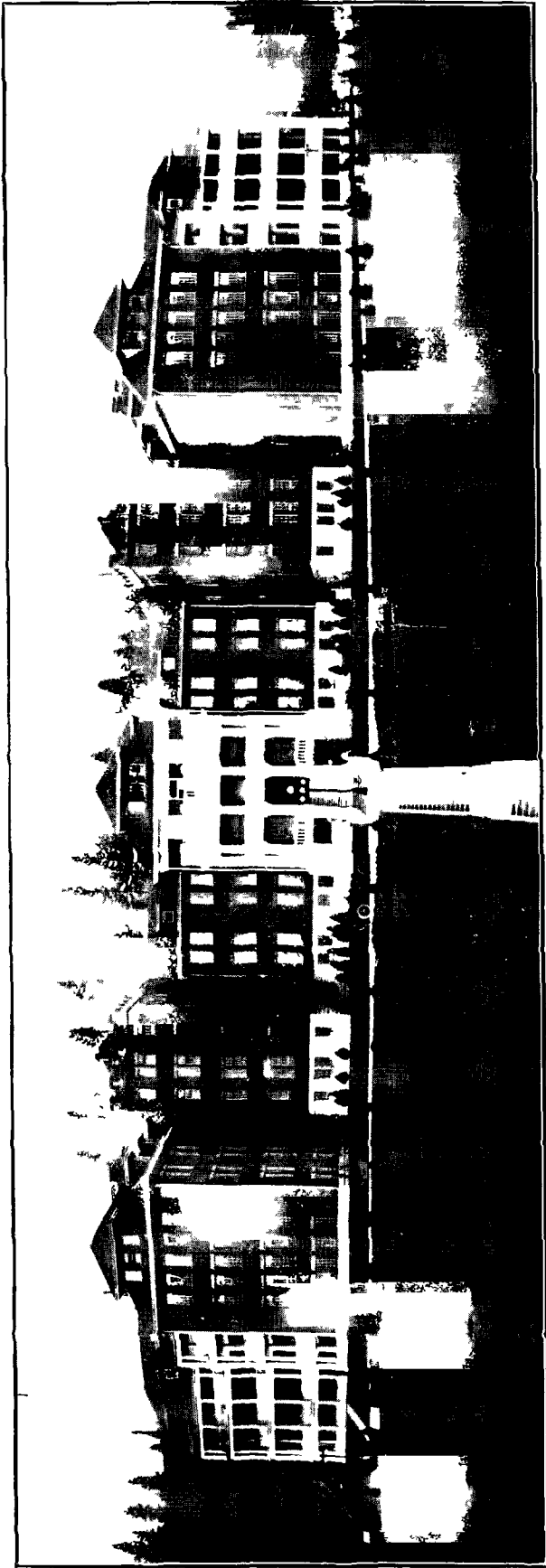
TABLE NO. 8.

Showing what Districts contributed Patients during 1917.

Place of Residence at Time of Committal.	Male.	Female.	Total.
Agassiz.....	1	..	1
Alberni.....	1	..	1
Alert Bay.....	1	..	1
Alice Arm.....	1	..	1
Anyox.....	..	1	1
Ashcroft.....	1	..	1
Burnaby.....	..	2	2
Burquitlam.....	1	..	1
Bridesville.....	2	..	2
Calgary, Alta.....	..	2	2
Campbell River.....	..	1	1
Chilliwack.....	1	2	3
Clinton.....	1	..	1
Collingwood.....	1	1	2
Colquitz.....	1	..	1
Cowichan.....	1	1	2
Cumberland.....	1	..	1
Dawson, Y.T.....	1	..	1
Deep Bay.....	1	..	1
Duncan.....	2	..	2
East Burnaby.....	..	1	1
Edgewood.....	1	..	1
Edmonds.....	1	..	1
Enderby.....	1	..	1
Esquimalt.....	3	1	4
Excelsior Creek, Y.T.....	..	1	1
Fernie.....	1	..	1
Fort St. James.....	1	..	1
Fraser Mills.....	2	..	2
Gabriola Island.....	1	..	1
Golden.....	1	..	1
Granby.....	1	..	1
Granby Bay.....	1	..	1
Grand Forks.....	2	..	2
Greenwood.....	2	..	2
Harriet Bay.....	1	..	1
Hedley.....	1	..	1
Inisfree, Alta.....	..	1	1
James Island.....	..	1	1
Kamloops.....	5	1	6
Kaslo.....	..	1	1
Kelowna.....	1	1	2
Ladner.....	2	..	2
Ladysmith.....	2	1	3
Langley.....	1	..	1
Lawn Hill.....	1	..	1
Lulu Island.....	1	1	2
Lund.....	1	..	1
Mara Lake.....	1	..	1
Matsqui.....	1	..	1
Merritt.....	2	..	2
Mission City.....	2	1	3
Morgan Creek.....	..	1	1
Morrissey.....	3	..	3
Mount Tolmie.....	1	..	1
Nanaimo.....	1	2	3
Nelson.....	6	2	8
New Westminster.....	9	4	13
Nicola.....	1	..	1
North Vancouver.....	4	5	9
Ocean Falls.....	1	..	1
150-Mile House.....	1	..	1
Parksville.....	..	1	1
Pemberton Meadows Reserve.....	..	1	1

TABLE No. S—*Concluded.*

Place of Residence at Time of Committal.	Male.	Female.	Total.
Penticton.....	1	1	2
Point Grey.....	1	2	3
Port Moody.....	1	..	1
Port Stanley, Ont.....	1	..	1
Prince Rupert.....	4	..	4
Princeton.....	2	..	2
Quatsino.....	1	..	1
Revelstoke.....	3	2	5
Riska Creek.....	1	..	1
Rossland.....	1	2	3
Royal Oak.....	1	..	1
Ruskin.....	1	..	1
Salmon Arm.....	1	..	1
Saanich.....	2	4	6
Savona.....	..	1	1
Selkirk, Y.T.....	..	1	1
Sidney.....	1	..	1
South Vancouver.....	5	6	11
South Wellington.....	1	..	1
Stark Falls.....	1	..	1
Stevesville, Alta.....	1	..	1
Sullivan.....	1	..	1
Terrace.....	..	1	1
Trail.....	2	..	2
Ucluelet.....	1	..	1
Vancouver.....	94	53	147
Vernon.....	4	..	4
Victoria.....	26	15	41
Wasa.....	1	..	1
White Horse, Y.T.....	1	1	2
Totals.....	245	126	371



Mental Hospital Issoudun

TABLE No. 9.  
Showing the Occupations of those admitted during 1917.

Occupation.	Male.	Female.	Total.
Accountant .....	2	..	2
Agent .....	3	1	4
Apprentice .....	1	..	1
Architect .....	2	..	2
Baker .....	3	..	3
Barber .....	1	..	1
Barrister .....	1	..	1
Bar-tender .....	1	..	1
Blacksmith .....	6	..	6
Book-keeper .....	1	1	2
Broker .....	1	..	1
Butcher .....	1	..	1
Carpenter .....	6	..	6
Chef .....	1	..	1
Clerk .....	7	..	7
Collector .....	1	..	1
Contractor .....	1	..	1
Cook .....	2	..	2
Cruiser .....	1	..	1
Domestic .....	..	7	7
Draper .....	1	..	1
Dressmaker .....	..	1	1
Druggist .....	1	..	1
Electrician .....	3	..	3
Engineer .....	6	..	6
Farmer .....	12	..	12
Fireman .....	3	..	3
Foreman .....	1	..	1
Gardener .....	1	..	1
Grocer .....	1	..	1
Housekeeper .....	..	9	9
Housewife .....	..	86	86
Interpreter .....	1	..	1
Janitor .....	1	..	1
Journalist .....	..	1	1
Junk-dealer .....	1	..	1
Labourer .....	94	..	94
Logger .....	9	..	9
Longshoreman .....	1	..	1
Machinist .....	2	..	2
Merchant .....	3	..	3
Miner .....	15	..	15
Nurse .....	..	1	1
Painter .....	1	..	1
Physician .....	1	..	1
Plumber .....	1	..	1
Rancher .....	11	..	11
Rug-weaver .....	1	..	1
Sailor .....	4	..	4
Shoemaker .....	1	..	1
Sign-writer .....	1	..	1
Smelterman .....	2	..	2
Steam-fitter .....	1	..	1
Stoker .....	1	..	1
Stone-cutter .....	1	..	1
Storekeeper .....	1	..	1
Student .....	..	1	1
Tailor .....	2	..	2
Teacher .....	1	2	3
Teamster .....	1	..	1
No occupation .....	16	16	32
Totals .....	245	126	371

TABLE NO 10

Showing the Age of those admitted during 1917

Age	Male	Female	Total
Under 15 years	4	3	7
From 15 to 20 years	12	3	15
20 to 25 "	19	8	27
" 25 to 30 "	19	10	29
" 30 to 35 "	40	18	58
" 35 to 40 "	42	22	64
" 40 to 45 "	33	16	49
" 45 to 50 "	23	9	32
" 50 to 55 "	16	19	35
" 55 to 60 "	10	4	14
" 60 to 65 "	9	4	13
" 65 to 70 "	9	6	15
" 70 to 75 "	5	3	8
" 75 to 80 "	1	1	2
Over 80 years	3		3
Totals	245	126	371

TABLE NO 11

Showing the Number of Attacks in those admitted during 1917

Number of Attacks	Male	Female	Total
First	194	97	291
Second	39	24	63
Third	6	4	10
Fifth	1		1
Several	1	1	2
Unknown	4		4
Totals	245	126	371

TABLE NO 12

Showing the Alleged Duration of Attack prior to Admission

Duration of Attack	Male	Female	Total
Under 1 week	30	15	45
From 1 to 1 month	84	45	129
" 1 to 3 months	36	24	60
" 3 to 6 "	15	9	24
" 6 to 12 "	13	2	15
" 1 to 2 years	13	4	17
" 2 to 5 "	3	6	9
" 5 to 10 "	4	4	8
" 10 to 15 "	3	2	5
Over 15 years	10	6	16
Unknown	34	9	43
Totals	245	126	371

TABLE No. 13.

Showing Statistics of Heredity in those admitted during 1917.

Heredity.	Male.	Female.	Total.
Paternal branch.....	17	6	23
Maternal branch.....	9	12	21
Lateral branches.....	12	11	23
Heredity, inferred.....	8	3	11
Unknown.....	199	94	293
Totals.....	245	126	371

TABLE No. 14.

Showing the Alleged Exciting Cause of Attack of Insanity in those admitted during 1917.

Alleged Cause.	Male.	Female.	Total.
Alcohol.....	18	4	22
Arteriosclerosis.....	2	1	3
Cardiorenal disease.....	1	..	1
Cerebral embolism.....	..	2	2
Drugs.....	3	1	4
Epilepsy.....	6	..	6
Hemiplegia.....	..	1	1
Heredity, ascertained.....	38	29	67
Heredity, inferred.....	8	3	11
Menopause.....	..	3	3
Old age.....	21	11	32
Overstudy.....	..	1	1
Pregnancy.....	..	1	1
Seclusion.....	4	..	4
Strain of military service.....	1	..	1
Syphilis.....	23	8	31
Traumatic.....	3	1	4
Worry.....	2	2	4
Unknown.....	115	58	173
Totals.....	245	126	371

TABLE No. 15.

Showing the State of Bodily Health of those admitted during 1917.

Bodily Condition.	Male.	Female.	Total.
In average bodily health.....	218	91	309
In reduced health.....	21	31	52
In greatly reduced health.....	6	4	10
Totals.....	245	126	371

TABLE No. 16.

Showing the Form of Mental Disorder in those admitted during 1917.

Form of Disorder.	Male.	Female.	Total.
Arteriosclerotic hallucinosis .....	1	..	1
Cerebral syphilis.....	1	1	2
Dementia præcox .....	59	23	82
Epileptic insanity .....	7	..	7
General paresis.....	20	6	26
Idiocy and imbecility.....	14	12	26
Mania, acute.....	1	1	2
Mania, depressive condition .....	80	52	132
Melancholia.....	1	1	2
Paranoia.....	11	9	20
Senile dementia .....	25	11	36
Terminal dementia .....	3	..	3
Toxic insanity .....	21	10	31
Traumatic insanity.....	1	..	1
Totals.....	245	126	371

TABLE No. 17A.

Showing the Number allowed out on Probation and Results during 1917, New Westminster.

Results.	Male.	Female.	Total.
Discharged recovered .....	19	18	37
" improved .....	4	3	7
" unimproved .....	5	6	11
Returned to Hospital .....	3	13	16
Still out at close of year.....	9	32	41
Totals.....	40	72	112

TABLE No. 17B.

Showing the Number allowed out on Probation and Results during 1917, Essondale.

Results.	Males only.
Discharged recovered .....	11
" improved .....	11
" unimproved .....	3
Returned to Hospital .....	1
Still out at close of year.....	22
Total.....	48

TABLE NO. 18A.

Showing the Alleged Duration of Insanity prior to Admission in those discharged from New Westminster during 1917.

Duration of Insanity.	Male.	Female.	Total.
Less than 1 week .....	10	7	17
" 1 month .....	10	17	27
From 1 to 2 months .....	6	9	15
" 2 to 3 " .....	..	2	2
" 3 to 6 " .....	1	3	4
" 6 to 12 " .....	3	2	5
" 1 to 2 years .....	3	1	4
" 2 to 3 " .....	1	2	3
Over 3 years .....	1	3	4
Unknown .....	18	15	33
Totals .....	53	61	114

TABLE NO. 18B.

Showing the Alleged Duration of Insanity prior to Admission in those discharged from Essondale during 1917.

Duration of Insanity.	Males only.
Less than 1 week .....	11
" 1 month .....	12
From 1 to 2 months .....	9
" 3 " 6 " .....	4
" 1 " 2 years .....	1
Unknown .....	15
Total .....	52



TABLE No 19A

Showing the Length of Residence of those who were discharged from New Westminster during 1917

Length of Residence	Discharged recovered	Discharged improved	Discharged unimproved
Less than 1 month	11	2	9
From 1 to 2 months	12	2	3
" 2 " 3 "	12	1	5
" 3 " 4 "	5	3	2
" 4 " 5 "	6	1	
" 5 " 6 "	2	1	2
" 6 " 9 "	8	3	2
" 9 " 12 "	5	3	
" 1 " 2 years	4	1	1
" 2 " 3 "	1		3
" 3 " 4 "	1		
" 4 " 5 "	1		
" 5 " 6 "		1	
" 9 " 10 "	1		
Totals	69	18	27

TABLE No 19B

Showing the Length of Residence of those who were discharged from Essondale during 1917

Length of Residence	Discharged recovered	Discharged improved	Discharged unimproved
From 1 to 2 months	1	4	2
" 3 " 4 "	3	5	4
" 5 " 6 "	2		
" 6 " 9 "	4	3	1
" 9 " 12 "	2	2	
" 1 " 2 years	4	4	
" 2 " 3 "	2	2	2
" 3 " 4 "		1	
" 4 " 5 "		1	2
" 7 " 8 "	1		
Over 8 years			
Totals	19	22	11

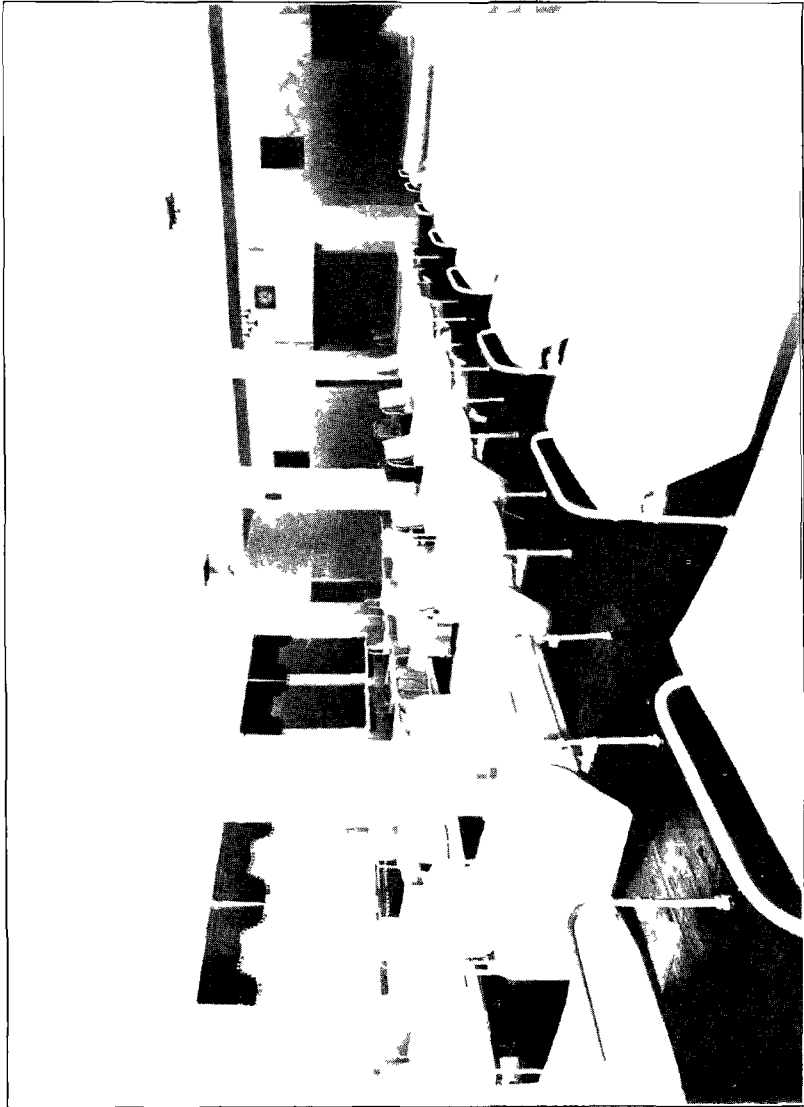
TABLE No. 20A.  
Records of Deaths for the Year 1917, New Westminster.

Register No.	Initials.	Sex.	Age.	TIME IN HOSPITAL.			Certified Cause.
				Years.	Months.	Days.	
4987	T. P.	M.	72	..	..	6	Cerebral embolism.
4625	R. J. M.	F.	30	1	..	27	General paresis.
1558	E. M.	F.	47	12	3	3	Status epilepticus.
3938	E. C.	F.	69	2	11	17	Exhaustion of senile dementia.
2877	E. T.	F.	62	5	10	14	Endocarditis and myocarditis.
5019	M. H.	F.	69	..	..	7	Exhaustion of senile dementia.
4784	E. B.	M.	6	..	8	12	Pulmonary tuberculosis.
4388	C. R. S.	F.	46	1	10	27	General paresis.
3081	P. W.	M.	48	6	1	9	Pulmonary tuberculosis.
4731	C. A. B.	F.	87	..	10	24	Exhaustion of senile dementia.
4919	F. N. P.	M.	16	..	4	26	Insufflation suffocation.
4856	J. K.	M.	44	..	7	24	Pernicious anæmia.
5037	E. R.	M.	23	..	1	17	Exhaustion of acute mania.
4375	E. M. G.	F.	65	2	..	25	General paresis.
5093	A. A.	M.	36	..	..	12	Cerebral tuberculosis.
5102	J. A.	M.	74	..	..	5	Bronchopneumonia.
5106	M. G. H.	F.	39	..	..	21	General paresis.
3654	R. E.	M.	37	4	..	24	Pulmonary tuberculosis.
1662	K. C.	M.	59	11	9	5	Exhaustion of epileptic dementia.
5131	E. L. C.	M.	39	..	..	7	General paresis.
3122	A. H.	F.	75	5	6	1	Gangrene.
4298	T. S. B.	M.	24	2	5	16	Uremia.
4240	A. J. D.	F.	74	2	7	25	Exhaustion of senile dementia.
4457	R. H. B.	M.	45	2	1	3	Strangulation.
5077	F. B.	M.	55	..	2	27	Œdema of lungs.
5022	D. McD.	M.	39	..	5	..	Exhaustion of acute mania.
4677	H. G.	F.	12	1	4	17	Toxic absorption.
5034	J. A.	M.	81	..	4	19	Exhaustion of senile dementia.
3437	N. E.	F.	43	4	8	23	General paresis.
3238	H. H.	M.	59	5	3	16	Cerebral hæmorrhage.
4972	M. L. V. K.	F.	33	..	7	12	General paresis.
3462	D. L.	M.	69	4	9	5	Exhaustion of epileptic dementia.
5186	L. B.	F.	48	..	..	14	General paresis.
4471	C. D.	F.	38	2	2	10	Pulmonary tuberculosis.
4904	C. C.	F.	41	..	11	9	General paresis.
4213	N. K. P.	F.	31	2	11	10	Pulmonary tuberculosis.
5050	N. H. J.	F.	16	..	6	15	Exhaustion of idiocy.
5148	M. R. L. H.	F.	33	..	3	19	Exhaustion of inanition.
4866	B. B. H.	M.	37	1	2	13	General paresis.
5230	N. J. Q.	F.	40	..	1	9	Exhaustion of manic depressive insanity.
5039	M. B.	F.	72	..	8	4	Myocarditis.
245	O. N.	M.	80	30	6	13	Pulmonary infarction.
4662	G. W. O.	M.	46	1	8	29	General paresis.
5156	S. F.	F.	65	..	4	10	Cerebral hæmorrhage.
5192	J. R. R.	M.	34	..	3	10	Cerebral syphilis.
4966	O. G.	M.	36	..	11	7	General paresis.
5316	D. McP.	M.	55	..	..	3	Gumma of the cerebrum.
4735	L. C. R.	F.	17	1	7	21	Exhaustion of imbecility.
5241	J. B. M.	M.	50	..	2	21	Exhaustion of acute mania.
4900	F. G.	M.	71	1	4	23	Diabetic furunculosis.
5196	L. M. S.	F.	42	..	4	7	Exhaustion of acute mania.
4482	C. J. K.	M.	36	2	6	3	General paresis.
4862	E. B.	M.	7	1	4	17	Exhaustion of idiocy.
3143	L. C.	F.	37	5	11	17	Abscess of liver.
4675	J. W. A.	M.	42	1	10	2	General paresis.
5325	J. F.	M.	30	..	..	14	Streptococic septicæmia.
4955	J. A. F.	M.	62	1	..	27	Exhaustion of senile dementia.
5261	C. W.	M.	18	..	2	16	Acute dilatation of stomach.
5359	W. J. F.	M.	46	..	..	3	Ulceration of intestines (sigmoid).
1367	P. L.	M.	42	14	9	9	Pulmonary tuberculosis.

TABLE No. 20B.

## Record of Deaths for the Year 1917, Essondale.

Register No.	Initials.	Sex.	Age.	TIME IN HOSPITAL.			Certified Cause.
				Years.	Months.	Days.	
1394	H. T.	M.	65	12	6	4	Myocarditis.
3042	F. C.	M.	76	5	4	..	Bronchopneumonia.
4476	P. B.	M.	78	1	6	15	Sarcoma of jaw.
4155	R. W.	M.	36	2	5	18	Tubercular peritonitis.
2426	A. B. McK.	M.	62	6	6	6	Chronic nephritis.
3027	J. E.	M.	25	5	5	8	Pulmonary tuberculosis.
4803	H. S.	M.	47	..	9	..	Cerebral hæmorrhage.
4796	S. B.	M.	61	..	9	13	Chronic nephritis.
4778	A. N. W.	M.	71	..	9	7	Bipneumonia and infected arm.
4762	A. A. G.	M.	50	..	11	..	Bronchopneumonia.
4351	A. D.	M.	35	2	1	11	Pulmonary tuberculosis.
330	A. C.	M.	80	27	10	14	Cirrhosis of liver.
4756	C. P.	M.	41	..	11	17	Cerebral hæmorrhage.
4912	J. B.	M.	78	..	6	14	Gastro-enteritis.
4599	W. B.	M.	41	1	5	25	General paresis.
3021	C. M. C.	M.	33	5	8	10	Bronchopneumonia.
4434	J. M. T.	M.	47	2	..	4	Pulmonary tuberculosis.
4315	H. R. S.	M.	41	2	3	29	Exhaustion of general paresis.
4739	M. W.	M.	84	1	1	24	Myocarditis.
4777	G. G.	M.	61	1	..	11	Cerebral hæmorrhage.
5064	F. S. B. C.	M.	53	..	2	22	Cerebral hæmorrhage.
4093	R. M.	M.	70	3	..	..	Cerebral hæmorrhage.
5038	J. P. E.	M.	67	..	4	4	Chronic nephritis.
4712	S. L.	M.	40	1	3	12	Chronic nephritis.
3752	W. M.	M.	53	3	11	29	Pneumonia.
3770	H. D.	M.	37	3	10	21	Cerebral hæmorrhage.
3853	J. V.	M.	39	3	9	9	Cerebral hæmorrhage.
5123	G. K.	M.	24	..	2	18	Pulmonary tuberculosis.
292	C. Y.	M.	80	29	5	11	Exhaustion of terminal dementia.
4340	J. B.	M.	53	2	5	18	Cerebral hæmorrhage.
3912	C. D.	M.	45	3	7	23	Carcinoma of liver.
4780	G. E. M.	M.	38	1	2	18	Lobar pneumonia.
5089	T. C. R. C.	M.	37	..	4	16	Cerebral hæmorrhage.
82	W. B.	M.	70	41	4	10	Gastro-enteritis.
4098	J. S. C.	M.	24	3	3	21	Pulmonary tuberculosis.
3218	J. McT.	M.	60	5	6	26	Exhaustion of senile dementia.
204	T. B.	M.	74	31	11	14	Myocarditis.
3241	R. E. W.	M.	29	5	6	19	Typhoid.
2810	W. M.	M.	65	6	10	7	Exhaustion of senile dementia.
4530	V. R. K.	M.	34	2	2	14	Endocarditis.
4143	O. R.	M.	18	3	3	8	Pulmonary tuberculosis.
5095	D. L. T.	M.	40	7	..	..	Exhaustion of general paralysis.
4172	W. S.	M.	81	3	3	10	Pneumonia.
3781	K. L. B.	M.	Unk'n	4	4	..	Cerebral hæmorrhage.
5176	O. E. M.	M.	66	..	5	15	Exhaustion of dementia præcox.
4763	J. E.	M.	39	1	8	..	Cerebral hæmorrhage.



Dormitory New Mental Hospital, Essondale

TABLE No. 21A.

Showing Work done by Patients during the Year 1917 at New Westminster.

Work done by Patients.	Days.
Auto-truck.. . . . .	365
Baker . . . . .	930
Carpenter . . . . .	632
Chicken-house . . . . .	426
Dining-room . . . . .	3,793
Engineer . . . . .	730
Farmer . . . . .	8,285
Florist . . . . .	329
Gardener . . . . .	4,035
Gate. . . . .	357
Kitchen . . . . .	2,646
Laboratory . . . . .	365
Laundry . . . . .	2,303
Lawns . . . . .	1,558
Painter . . . . .	744
Piggery . . . . .	1,460
Plasterer. . . . .	131
Plumber . . . . .	310
Porter. . . . .	760
Scullery. . . . .	1,154
Shoemaker . . . . .	757
Tailor. . . . .	297
Teamster . . . . .	313
Ward-work . . . . .	22,003

TABLE NO. 21B.

Labour of Patients under the Direction of the Grounds Overseer at Essondale during the Year 1917—

	Days.
Blacksmith-shop .....	300
Boundary stone fence .....	727
Boiler-room and coal-bunkers .....	286
Clearing land .....	765
Chicken-yard .....	366
Chores .....	808
Cement-work and building .....	1,903
Colony Farm .....	146
Cutting wood .....	265
Ditches and drains .....	677
Dykes—	
River-work .....	1,638
Mattress-work .....	935
Pile-driving and donkey .....	643
Field-work .....	631
Fencing .....	272
Grading grounds .....	301
Gardens .....	2,368
Lawns (grass-cutting) .....	1,495
Manure .....	308
Miscellaneous .....	2,490
Nursery .....	817
New laundry .....	2,129
Piggery .....	1,249
Roads .....	368
Root-house .....	1,064
Tool-house .....	311
Teaming .....	570
Total .....	23,832

Labour of Patients in Various Departments at Essondale during 1917—

Bake-shop .....	466
Billiard-room and basement .....	4,874
Carpenter .....	780
Dining-room .....	5,742
Engineer .....	1,810
Kitchen .....	1,364
Laundry .....	5,940
Painter .....	813
Plasterer .....	1,475
Plumber .....	418
Parole patients' work .....	1,242
Scullery .....	1,458
Tailor-shop .....	223
Total .....	26,605

Labour of Patients at Colony Farm, Essondale, during the Year 1917—

Arena .....	720
Carpenter-shop .....	260
Dining-room .....	1,460
Farm Superintendent's house .....	362

*Carried forward* ..... 2,802

TABLE NO. 21B—*Concluded.*

	Days.
<i>Brought forward</i> .....	2,802
Farm (including fields, roads, stables, barns, and dairy) .....	11,281
General .....	705
Gardens .....	577
Kitchen .....	730
Fireman .....	1,095
Ward-work .....	1,825
<b>Total</b> .....	<b>19,015</b>

TABLE NO. 22.

*Articles made by Female Patients, 1917.*

Aprons .....	266	Pillow-slips .....	632
Chemises .....	247	Sheets .....	787
Clothes-bags .....	6	Surgeons' gowns .....	6
Covers, bureau .....	38	Skirts .....	6
Curtains, pairs .....	41	Table-cloths .....	53
Dresses, gingham .....	117	Towels, bath .....	321
"    night .....	18	"    hand .....	40
Handkerchiefs .....	240	"    roller .....	306
Neckties .....	336	"    tea .....	236
Napkins, table .....	12	"    tray .....	107

*Articles made for Nurses.*

Aprons .....	117	Cuffs, pairs .....	74
Caps .....	33	Dresses .....	45

*Mending done for Nurses.*

Aprons .....	271	Cuffs .....	8
Caps .....	7	Dresses .....	173

*Mending done for Female Patients.*

Aprons .....	279	Pillow-slips .....	178
Blankets, canvas .....	96	Sheets .....	466
"    wool .....	253	Skirts .....	1,637
Blouses .....	178	Spreads, bed .....	178
Chemises .....	927	Table-cloths .....	196
Drawers .....	1,447	Towels, bath .....	85
Dresses, gingham .....	1,194	"    roller .....	61
"    night .....	1,030	Ticks, bed .....	135
"    serge .....	705	Vests, under .....	1,275
Hose .....	11,368		

*Mending done for Male Patients.*

Aprons .....	199	Socks, pairs .....	16,506
Blankets, wool .....	175	Spreads, bed .....	276
Coats, white .....	20	Sweaters .....	29
Drawers .....	2,968	Table-cloths .....	271
Pillow-slips .....	45	Towels, bath .....	68
Sheets .....	787	"    roller .....	47
Shirts, over .....	4,737	Ticks, bed .....	102
"    under .....	3,505	"    pillow .....	5

TABLE No. 22—Continued.

*Articles made for Essondale, 1917.*

Aprons, kitchen .....	75	Caps .....	10
.. for cooks .....	18	Table-cloths .....	65

*Fruit put up in 1917.*

Cherries .....	20	quarts.
Currants, black .....	25	"
.. red .....	35	"
Crab-apples .....	80	"
Pears .....	50	"
Plums .....	60	"
Rhubarb .....	125	"
Raspberry .....	45	"
Strawberry .....	138	"

*Pickles put up in 1917.*

Pears .....	20	quarts.
Tomatoes .....	90	"

*Tailor's Report for 1917.*

## Uniforms made for New Westminster—

49 suits .....	\$1,385 00	
39 pairs of pants .....	298 80	
		\$1,683 80

## Stock—

48 suits .....	\$ 702 00	
46 coats .....	208 00	
20 vests .....	64 00	
61 pairs of pants .....	232 00	
1 camisole .....	3 00	
8 canvas blankets .....	33 40	
38 bed-ticks .....	66 40	
16 pillow-ticks .....	5 60	
		1,314 40

## Repairs—

132 coats .....	\$ 72 80	
442 pairs of pants .....	110 50	
75 vests .....	18 75	
		202 05

Miscellaneous work .....

25 00

Total, New Westminster .....

\$3,225 25

## Uniforms made for Essondale—

72 suits .....	\$2,640 00	
53 pairs of pants .....	379 00	
		\$3,019 00

## Stock—

133 suits .....	\$1,784 00	
9 pairs of pants .....	34 00	
10 canvas blankets .....	40 00	
2 camisoles .....	7 00	
		1,865 00

Carried forward .....

\$4,884 00



TABLE No. 22—Continued.

	<i>Brought forward</i> .....		\$4,884 00
Repairs—			
	866 coats .....	\$	346 40
	1,908 pairs of pants .....		477 00
	555 vests .....		138 75
	19 canvas blankets .....		9 75
	16 camisoles .....		2 00
			<hr/>
			973 90
Miscellaneous—			
	Work .....	\$	3 25
	69½ yards lining at 27½ cents .....		19 11
	20 yards lining at \$1.20 .....		24 00
			<hr/>
			46 36
	Total, Essondale .....		<hr/>
			\$5,904 26
	Grand total .....		<hr/>
			\$9,129 51

*Statement, Tailor-shop, Year 1917.*

Debits—			
	January 1st, 1917, stock on hand .....	\$	967 93
	Goods purchased, tweeds, serges, etc. ....		5,257 84
Salaries—			
	Mr. Beggs .....	\$	945 00
	Mr. French .....		900 00
	Mrs. Huntley .....		540 00
	Miss Derby .....		240 00
	Miss Pennington .....		234 00
	Mrs. Black .....		49 00
			<hr/>
			2,908 00
	Power, electric .....	\$	106 77
	Light, electric .....		18 00
	Repairs, Singer Machine Co. ....		26 01
			<hr/>
			150 78
	Total .....		<hr/>
			\$9,284 55
Credits—			
	Clothing, etc., to Essondale .....	\$5,904 26	
	Clothing, etc., to New Westminster .....	3,225 25	
	Sales of cuttings (rags) .....	38 00	
	Stock on hand, December 31st, 1917 .....	766 10	
			<hr/>
			9,933 61
	Credit balance .....	\$	649 06

*Shoemaker's Report for 1917.*

New work for house and stock—			
	59 pairs of men's boots .....	\$	410 00
	449 " " slippers .....		1,063 00
	5 " " mocassins .....		10 00
	27½ " " special shoes .....		89 00
			<hr/>
	<i>Carried forward</i> .....		\$1,572 00

TABLE No. 22—*Concluded.*

<i>Brought forward</i> .....	\$1,572 00	
Repairs for New Westminster—		
180 pairs of men's boots .....	234 50	
25   "   "   slippers .....	26 50	
110   "   women's shoes .....	100 75	
Repairs for Essondale—		
448 pairs of men's boots .....	647 25	
306   "   "   slippers .....	205 65	
Miscellaneous .....	15 00	
<b>Total</b> .....	<b>\$2,801 65</b>	
<b>HOME FARM PRODUCE, 1917 (NEW WESTMINSTER).</b>		
Hogs sold alive, 66, value .....	\$1,612 20	
Pork shipped alive to Essondale, 14,610 lb. at 14 cents .....	2,045 40	
Pork dressed and supplied to Essondale, 205 lb. at 22 cents .....	45 10	
Pork dressed and supplied to New Westminster, 13,193 lb. at 22 cents .....	2,902 46	
		<u>\$6,605 16</u>
Hogs on hand—		
23 sows, value .....	\$ 920 00	
13 young sows, value .....	455 00	
4 boars, value .....	165 00	
27 hogs, average 200 lb. at 15 cents .....	510 00	
56 hogs, average 70 lb. at 15 cents .....	588 00	
61 pigs at \$8 each .....	488 00	
		<u>3,126 00</u>
<b>Total</b> .....		<u>\$9,731 16</u>
Stock on hand, January 1st, 1917, 170 hogs, value .....	\$2,650 00	
Cost of feed, etc., during 1917 .....	2,657 25	
Half-salary of farmer apportioned .....	447 50	
		<u>5,754 75</u>
<b>Total profit on piggery for 1917</b> .....		<u>\$3,976 41</u>
<b>POULTRY REPORT, 1917 (NEW WESTMINSTER).</b>		
Eggs supplied to the institution, 844 doz. at 45 cents .....	\$ 379 80	
Ducks, dressed, 60 at \$1.50 .....	90 00	
Chickens, dressed, 56 at \$1.25 .....	70 00	
		<u>\$ 539 00</u>
Stock on hand—		
13 ducks at \$1.50 .....	\$ 19 50	
100 chickens at \$1 .....	100 00	
180 pullets and hens at \$1.50 .....	270 00	
		<u>389 50</u>
<b>Total</b> .....		<u>\$ 929 30</u>
Stock on hand, January 1st, 1917—		
130 chickens at \$1 .....	\$ 130 00	
18 ducks at \$1.50 .....	27 00	
Feed for poultry during 1917 .....	416 45	
Quarter-salary of farmer apportioned .....	223 75	
		<u>797 20</u>
<b>Total profit on poultry for 1917</b> .....		<u>\$ 132 10</u>
<b>Total profit on piggery for 1917</b> .....		<u>3,976 41</u>
<b>Total profit on home farm</b> .....		<u>\$4,108 51</u>

## GARDEN PRODUCE, 1917 (NEW WESTMINSTER).

Credits—	<i>Vegetables.</i>			
Green onions .....	475 lb.	at	3c.	\$ 14 25
Cooking-onions .....	1,755 "	"	4c.	70 20
Vegetable marrows .....	426 "	"	2c.	8 52
Pumpkin .....	1,120 "	"	2c.	22 50
Ripe tomatoes .....	40 "	"	10c.	4 00
Green tomatoes .....	570 "	"	7c.	39 90
Horse-radish .....	98 "	"	10c.	9 80
Early potatoes .....	2,250 "	"	3c.	67 50
Late potatoes .....	2,700 "	"	1½c.	40 50
Peas .....	655 "	"	10c.	65 50
Asparagus .....	210 "	"	10c.	21 00
Carrots .....	22,720 "	"	1½c.	340 80
Spinach .....	3,865 "	"	10c.	386 50
Turnips .....	1,200 "	"	1½c.	18 00
Beets .....	9,000 "	"	1½c.	135 00
Cabbage .....	14,460 "	"	2c.	289 20
String beans .....	625 "	"	10c.	62 50
Celery .....	950 heads	"	5c.	47 50
Parsley .....	280 bunches	"	5c.	14 00
Radish .....	78 "	"	5c.	2 34
Lettuce .....	369 dozen	"	25c.	92 25
Sweet corn .....	397 "	"	20c.	79 40
Cucumbers .....	370 "	"	2c.	7 40
Estimated total value of vegetables .....				\$1,838 56

Credits—	<i>Fruits.</i>			
Apples .....	29,640 lb.	at	3c.	\$ 889 20
Strawberries .....	2,570 "	"	10c.	257 00
Raspberries .....	874 "	"	10c.	87 40
Gooseberries .....	69 "	"	10c.	6 90
Red currants .....	1,417 "	"	10c.	141 70
Black currants .....	94 "	"	12c.	11 28
Blackberries .....	9 "	"	10c.	90
Rhubarb .....	5,865 "	"	5c.	293 25
Pears .....	1,900 "	"	3c.	57 00
Cherries .....	742 "	"	10c.	74 20
Prunes .....	860 "	"	3c.	25 80
Plums .....	1,175 "	"	4c.	47 00
Apples sent to Essondale .....	2,650 "	"	3c.	79 50
Estimated total value of fruit .....				\$1,971 13
" " vegetables .....				1,838 56
Total .....				\$3,809 69

Debits—		
Water used .....		\$ 28 53
Quarter-year salary, one man at \$895 .....		223 75
1 doz. farming implements .....		31 50
1 bbl. lime spray, 42 gals. ....		16 80
54 apple, pear, plum, and cherry trees .....		26 55
1 month, team, ploughing, manuring, harrowing, and hauling .....		50 00
1 month salary, teamster .....		55 00
Total .....		\$ 432 13
Credits total .....		\$3,809 69
Debits total .....		432 13
Profit .....		\$3,377 56

## GREENHOUSE.

*Bedding Plants grown, 1917.*

Credits—	
13,707 plants at 10c. each .....	\$1,370 70
7,230       "    5c.   " .....	361 50
13,140       "    2c.   " .....	262 80
Sent to Essondale and Colony Farm .....	150 50
	<hr/>
Estimated value .....	\$2,145 50

*Cut Flowers under Glass.*

Credits—	
Cut flowers .....	450 00
	<hr/>
Total .....	\$2,595 50
Debits—	
Coal used in boiler-room in greenhouse, 1917 .....	\$ 274 80
Water used during 1917 .....	60 59
Salaries, 1917, two men .....	1,404 00
	<hr/>
Total .....	\$1,749 39
	<hr/>
Credits during 1917 .....	\$4,741 00
Debits during 1917 .....	1,749 39
	<hr/>
Total profit for year 1917 .....	\$2,991 61

## POULTRY STATEMENT, 1917 (ESSONDALE).

*Receipts.*

Eggs supplied Mental Hospital during 1917, 3,491 doz. at 35c. ....	\$1,221 85
Live birds supplied New Westminster .....	44 70
Dressed fowl supplied Mental Hospital, 1917, 1,575 lb. at 30c. ....	472 50
Poultry stock on hand, December 31st, 1917 .....	1,204 45
Feed stock on hand, December 31st, 1917 .....	41 25
	<hr/>
Total .....	\$2,984 75

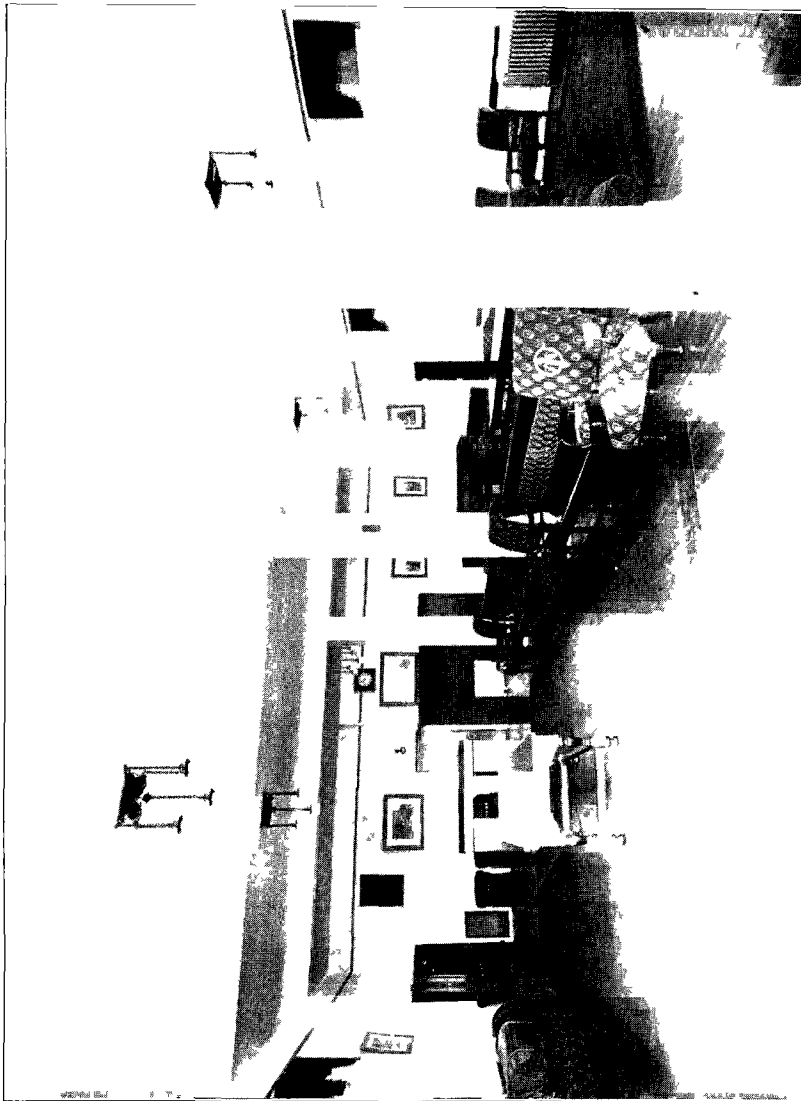
*Disbursements.*

Stock on hand, January 1st, 1917 .....	\$ 933 75
Feed supplied by Colony Farm during 1917 .....	125 58
Horse-labour supplied by Colony Farm, 1917 .....	107 71
Feed purchased .....	925 90
Wages .....	450 00
Balance (being profit) .....	441 81
	<hr/>
Total .....	\$2,984 75

## PIGGERY STATEMENT, 1917 (ESSONDALE).

*Receipts.*

Dressed pork supplied to Mental Hospital, Essondale, during 1917, 18,110½ lb. at 22c. ....	\$3,984 31
Live hogs supplied to Mental Hospital, 1917, 3,115 lb. at 14c. ....	436 10
Live hogs on hand, December 31st, 1917, 44 head—8,320 lb. at 14c. ...	1,164 80
	<hr/>
Total .....	\$5,585 21



Patients Day room New Mental Hospital Essondale ( West Wing )

*Disbursements.*

Hogs on hand, January 1st, 1917, 38 head—8,670 lb. at 9c. ....	\$ 782 10
Feed supplied by Colony Farm during 1917 .....	89 71
Feed purchased .....	44 65
Horse-labour supplied by Colony Farm .....	203 60
Live hogs supplied by New Westminster during 1917, 14,610 lb. at 14c.	2,045 40
Dressed pork supplied by New Westminster, 205 lb. at 22c. ....	45 10
Wages .....	450 00
Balance (being profit) .....	1,924 65
<b>Total .....</b>	<b>\$5,585 21</b>

## TREES AND SHRUBS SHIPPED FROM NURSERY, ESSONDALE, DURING 1917.

Grand Forks School .....	\$ 124 40
Esquimalt Public School .....	206 20
Government Agent, New Westminster .....	71 00
Matsqui School .....	33 90
Port Hammond School .....	118 20
Murrayville School .....	56 85
Government Agent, Nelson .....	8 40
Mount Anarchist School, Bridesville .....	39 70
Peachland School .....	84 30
Government Agent, Kamloops .....	10 40
Ladner School .....	342 30
Maple Ridge School .....	233 80
Milner School .....	15 30
Langley Prairie School .....	64 50
Aldergrove School .....	79 55
Revelstoke School Board .....	151 75
Kelowna School Board .....	37 20
Mission Central School .....	126 25
Sardis School .....	161 50
Cloverdale School .....	27 30
Chilliwack School .....	47 45
Poplar Grove School, Penticton .....	61 50
Lord Lister School, New Westminster .....	134 30
Lord Kelvin School, New Westminster .....	57 00
McBride School, New Westminster .....	39 20
Connaught High School, New Westminster .....	273 70
Mission City School .....	12 10
Cowichan School Board, Berch School .....	235 60
West Langley School .....	30 00
Fort Langley School .....	174 20
Mental Hospital .....	30 00
<b>Total value of nursery stock shipped .....</b>	<b>\$3,087 85</b>

## NURSERY STATEMENT, 1917 (ESSONDALE).

*Receipts.*

Produce supplied Mental Hospital, Essondale, during the year 1917..	\$ 8,028 89
Produce supplied Hospital for Insane, New Westminster, during 1917	498 60
Produce supplied Colony Farm, Essondale, during the year 1917 ....	141 30
Nursery stock supplied to schools, etc., in the Province during 1917..	3,087 85
Inventory of produce and hay on hand, December 31st, 1917 .....	5,155 88
Inventory of nursery stock on hand, December 31st, 1917 .....	25,123 30
<b>Total .....</b>	<b>\$42,035 82</b>

*Disbursements.*

Inventory of produce and hay on hand, January 1st, 1917 .....	\$ 3,212 28
Inventory of nursery stock on hand, January 1st, 1917 .....	21,193 93
Feed for horses, etc., supplied by Colony Farm .....	4,929 56
Feed for horses, etc., supplied by Mental Hospital .....	495 75
Wages for 1917 .....	4,260 00
Maintenance, including fertilizer .....	2,231 62
Balance (being profit) .....	5,712 68
	-----
Total .....	\$42,035 82
	-----
1917. Inventory of nursery stock .....	\$25,123 30
1916. Inventory of nursery stock .....	21,193 93
	-----
Increase .....	\$ 3,929 37

MEMORANDUM OF VEGETABLES AND FRUIT GROWN IN GARDEN AT FARM COTTAGE  
(HOSPITAL ANNEX), 1917.

Radishes .....	250 lb.
Lettuce .....	300 "
Spinach .....	200 "
Peas .....	1,070 "
" (dried and shelled) .....	230 "
Potatoes .....	3,465 "
Strawberries .....	463 "
Onions (small) .....	370 "
" (stored) .....	1,054 "
Tomatoes .....	1,200 "
Runner beans .....	440 "
Kidney beans .....	120 "
Cucumbers .....	180 only.
Squash .....	220 "
Pumpkins .....	86 "
Cabbage (green) .....	1,500 "
" (red) .....	500 "
Cauliflower .....	500 "
Celery .....	650 hd.
Brussels sprouts .....	120 lb.
Kale .....	750 "
Rhubarb .....	200 "
Parsnips .....	350 "
Fruit, preserved .....	432 "
Sugar used for same .....	324 "
Pickled tomatoes, chow-chow .....	100 "
Pickled red cabbage .....	500 "

VICTORIA, B.C. :

Printed by WILLIAM H. CULLIN, Printer to the King's Most Excellent Majesty.

1918.